

CHUNJO



model 18000

product guide

- 750 mton (825 ton) Capacity
No. 55A Boom with MAX-ER™
- 600 mton (660 ton) Capacity
No. 55 Boom
- 450 mton (500 ton) Capacity
No. 55/79A Boom
- 9 098 m ton-m (65,505 ft-kips)
Maximum Load Moment with
MAX-ER
- 97,5 m (320')
No. 55 Main Boom
- 121,9 m (400')
No. 55/79A Main Boom
- 149,3 m (490')
No. 79A Luffing Jib
on No. 55 Boom
- 158,5 m (520')
No. 44 Luffing Jib
on No. 55/79A Boom
- 185,9 m (610')
No. 55 Main Boom with 79A
Luffing Jib with MAX-ER
- Asset Management Boom
and Jib Combinations
- 447 kW (600 HP) engine
- 160 m/min (524 fpm)
line speed - 32 mm wire rope
- 165 m/min (542 fpm)
line speed - 28 mm wire rope
- 217 kN (48,800 lb)
line pull - 32 mm wire rope
- 160 kN (35,800 lb)
line pull - 28 mm wire rope
- EPIC® controls with
CAN-BUS technology
- Fast, efficient self-assembly
and disassembly
- Manitowoc CraneCARE
comprehensive support

contents

Specifications	7
Outline Dimensions	8
Assembly	14
Performance Data	16
Boom Combinations	23
Main Boom Range / Load Charts	26
Luffing Jib Range / Load Charts	33
MAX-ER™	41
CraneCARE SM	56



index

2

	Specifications	Outline Dimensions and Weights	Wire Rope Lengths	Wire Rope Specifications	Boom Combinations	Range Diagram and Capacity Charts
No. 18000 Basic Crane	3-7	9-13				
Engine(s)	3					
Controls	3					
Hydraulic System	3					
Drums & Laggings	3					
Boom Hoist	4					
Swing System	4					
Boom Support System	4					
Counterweights	4	9-10				
Operator's Cab	4					
Carbody, Rotating Module	4	9				
Crawlers	5	9				
Optional						
Self-erect System	6					
Hook block/weight ball	6					
Miscellaneous Optional Equipment	7					
Performance Data	16-22					
Working Weights	20					
Assembly	14-15					
Manitowoc Crane CARE SM	58-59					
No. 55 or 55A Boom						
No. 55 or 55A Boom with Heavy-Lift Top	5	10-11	16-17	18-19	23	26-27
No. 55 or 55A Boom with Heavy-Lift Top with No. 79A Fixed Jib	6	12-13	18	21	24	30-32
No. 55 or 55A Boom with Heavy-Lift Top with No. 79A Luffing Jib	6	11-12	21	21	25	33-36
No. 55-79A Boom						
No. 55-79A Boom with Heavy-Lift Top	5	11-13	16-17	18-19	23	26-36
No. 55-79A Boom with Heavy-Lift Top with No. 44A Luffing Jib	6	11-13	18-21	18-19	25	37-40
MAX-ER™ 2000						
MAX-ER™ 2000	6	41-43				
No. 55 or 55A Boom with Heavy-Lift Top	5				44	46-48
No. 55 or 55A Boom with Heavy-Lift Top with No. 79A Fixed Jib	6				45	49-51
No. 55 or 55A Boom with Heavy-Lift Top with No. 79A Luffing Jib	6				45	52-55

specifications

3

Upperworks

Engine

Cummins Model QSX 15 Diesel, 6 cylinder, 447 kW (600 HP) @ 1800 high-idle RPM.

Includes engine block heater (120V), ether starting aid, transmission disconnect clutch for cold weather starting, high silencing muffler, hydraulic oil cooler, radiator and fan.

Multiple hydraulic pump drive transmission provides independent power for all machine functions.

Two 12 volt maintenance-free batteries, 1 300 CCA at -18°C (0° F), 24 volt system and 75 amp alternator.

One diesel fuel tank, 1 040 l (275 gal.), mounted on rear of upperworks, with level indicator in operator's cab.

Optional: Cold-weather package with heater for fluids, brake pedals, batteries and computer display.

Controls

Modulating electronic-over-hydraulic controls provide infinite speed response directly proportional to control lever movement. Controls include Manitowoc's exclusive EPIC[®] Electronically Processed Independent Control system with CAN-BUS technology providing microprocessor driven control logic, pump control, on-board diagnostics, and service information.

Block-up limit control is standard for hoist and whip lines.

Integrated wireless Load Moment Indicator system (LMI) offers standard load link for main boom and upper boom point. "Function cut-out" or "warning only" operation is selected via the Operator Interface Display on the LMI console.

Travel and swing alarms are standard.

Optional: Anemometer (wind speed indicator). Booms and jibs are prewired for anemometer.

Hydraulic System

Multiple high-pressure piston pumps, driven by a multi-pump transmission, provide independent closed-loop hydraulic power for the hoisting drums, boom hoist, swing, left crawler and right crawler.

Hydraulic reservoir has a capacity of 1 188l (314 gal.) and is equipped with a breather, clean out access, and internal diffuser.

Each function is equipped with relief valves to protect the hydraulic circuit from overload or shock.

System includes oil cooler and replaceable, ten-micron absolute full flow filter. All oil is filtered before entering the hydraulic pumps.

Hydraulic system also includes pump transmission disconnect and hydraulic oil cooler.

System	kg/cm ² (psi)	lpm (gpm)
Main Hoisting Drum 1	422 (6,000)	747 (200)
Main Hoisting Drum 2	422 (6,000)	747 (200)
Whip Drum	422 (6,000)	378 (100)
Boom Hoist	422 (6,000)	605 (160)
Standard Dual Swing	422 (6,000)	302 (80)
Optional Quad Swing	422 (6,000)	605 (160)
Left Crawler	422 (6,000)	378 (100)
Right Crawler	422 (6,000)	378 (100)
Mast Hoist	422 (6,000)	378 (100)
Optional Luffing Hoist	422 (6,000)	605 (160)

Drums

Basic machine is equipped with one (No. 55/79A Boom) or two (No. 55 or No. 55A Boom) 124,8 cm (49-1/8") wide, 64,5 cm (25-3/8") diameter hoist drums, one in the 3,0 m (10') boom insert and one in the boom butt. Each end of each drum is driven by a variable-displacement hydraulic motor through a planetary reduction. Each drum drive is equipped with a bi-directional drum brake. Whip drum is 82,2 cm (32-3/8") wide and 64,1 cm (25-1/4") diameter, grooved for 28 mm wire rope and driven by a variable-displacement hydraulic motor through a planetary reduction. Drum rotation indicator for each drum is standard. Bolt-on (shell-type) 124,8 cm (49-1/8") laggings for 28 mm or 32 mm dia. wire rope for liftcrane applications.

specifications

4

Swing System

High strength fabricated steel alloy rotating bed is mounted on 3,0 m (9' 10") diameter triple-row roller bearing turntable.

Rotating bed's upper and lower modules are fabricated steel and connected by four power actuated pins. Hydraulic connection of upper and lower modules is made through quick-coupled hydraulic lines. Enclosures are included on both sides of the upper module.

Independent swing powered by 2 fixed displacement hydraulic motors coupled to planetary reduction gearboxes with internal brakes. 360° positive swing lock.

Swing system maximum speed: 1.2 rpm.

Mast Hoist System

Single drum mast hoist mounted in rotating bed is powered by a fixed displacement hydraulic motor and a planetary reduction gear box with internal brake. Ratcheting pawl is standard. Includes mast-hoist wire rope.

Boom Hoist System

Independent boom hoist, mounted in the mast butt has grooved drum 1 168 mm (46") wide and 1 355 mm (53-3/8") diameter.

Each end of drum is powered by a variable-displacement hydraulic motor coupled to a planetary reduction gearbox with internal brake. Ratcheting pawl, rotation indicator, pressure roller and wire rope for 16-part boom hoist line are standard.

Boom hoist speed: raise 121,9 m (400') No. 55/79A main boom from 0° - 82° in 6 minutes, 6 seconds. Raise 97,5 m (320') No. 55 main boom from 0° - 82° in 6 minutes, 18 seconds.

Boom Support System

Moving Mast

Moving mast is 9,1m (30') long and connects to the fixed mast suspension rigging. When used with the optional self-erect package, the mast is utilized for crane assembly and disassembly. It is capable of lifting and positioning the crawler assemblies.

Fixed Mast

Stationary No. 56 lattice mast provides geometry to raise and support all boom lengths. 30,5 m (100') mast standard for basic crane; 42,7 m (140') mast required for MAX-ER™ applications. Boom-hoist rope reeved from drum in mast butt through sheaves in mast top and boom-hoist equalizer forms 16-part boom-hoist rigging. High-strength steel straps connect equalizer to boom top.

Cushioned boom stop and automatic boom stop are standard.

Counterweight

QTY.	ITEM	UNIT WEIGHT		TOTAL WEIGHT	
		kg	lb	kg	lb
6	Carbody				
	Lower Box	19 958	44,000	119 748	264,000
	Tray	12 700	28,000	25 400	56,000
Carbody Total				145 150	320,000
28	Upperworks				
	Upper Box	8 165	18,000	228 615	504,000
	Tray	5 443	12,000	10,886	24,000
Upperworks Total				239 497	528,000
Counterweight TOTAL				384 646	848,000

Includes connecting pins, brackets, and stops.

Vision Operator's Cab

The Vision Cab™ is a fully enclosed and insulated steel module mounted to the left front corner of rotating bed. Module is equipped with power tilt, sliding door, large safety glass windows on all sides and roof. Signal horn, power seat, all season climate control package, front and roof windshield wipers, dome light, sun visor and shade, fire extinguisher, swing and travel alarms, and radio/CD player are standard equipment. Operator's station swings over front of rotating bed for transportation.

Lowerworks

Carbody

Connects rotating bed and crawler frames. Fabricated steel rotating bed lower module mounts to single-piece carbody by a 3 m (9' 10") diameter triple-row roller bearing turntable. Each crawler frame is mounted to the carbody with FACT™ connection system power-actuated pins. Crawler drive motors are mounted on carbody, permitting crawler removal without opening travel drive hydraulic circuit.

specifications

5

Crawlers

Crawler assemblies are 11,81 m (38' 9") long with 1,52 m (5') wide cast steel crawler pads "low maintenance" intermediate rollers. Each crawler is powered independently by two variable displacement hydraulic motors and includes two hydraulically powered pin actuators for fast installation and removal from carbody. Carbody mounted drive motors are connected to crawler final reduction via drive shafts. Crawlers provide ample tractive effort allowing counter-rotation with full rated load.

Maximum ground speed is 1,1 kph (0.7 mph).

Attachments

No. 55-79A Boom

The liftcrane is equipped with a 36,6 m (120') No. 55/79A tubular-chord boom consisting of a 6,1 m (20') No. 55 or No. 55A butt, 3,0 m (10') No. 55 or No. 55A insert, 6,1 m (20') No. 55 or No. 55A insert, 12,2 m (40') No. 55/79 transition insert with equalizer platform, and 9,1 m (30') No. 79A heavy-lift top with sixteen 762 mm (30") diameter roller bearing sheaves on one shaft. Includes rope guides, boom angle indicator, and a 27,2 t (30 USt) swivel hook and weight ball weighing 1 270 kgs (2,800 lbs) for 28 mm or 32 mm wire rope. The No. 55/79A boom utilizes steel suspension straps and Manitowoc's patented, exclusive FACT™ connection system.

Powered boom hinge system including cylinder, piping, operating controls, and locking device are standard.

Luffing jib preparation is standard.

- ▶ Optional: 6,1 m (20'), and 12,2 m (40') No. 79 boom inserts with steel boom suspension straps, and FACT™ connection system.
- ▶ Optional: 12,2 m (40') No. 55 or No. 55A boom insert with steel boom suspension straps, and FACT™ connection system.
- ▶ Optional: 12,2 m (40') No. 55 or No. 55A boom insert with luffing drum sheaves, steel boom suspension straps, and FACT™ connection system.
- ▶ Optional: Intermediate suspension, required for boom lengths of 109,7 m (360') or more.
- ▶ Optional: Detachable upper boom point with one 762 mm (30") diameter tapered roller bearing steel

sheave with rope guard, for liftcrane use on heavy-lift boom top. (Same upper point used on Models 555, 777, 777T, 888, M-250, and 2250.)

Utilize optional boom inserts in combination with the No. 55/79A basic boom for total lengths up to 121,9 m (400').

No. 55 or No. 55A Boom

The liftcrane is equipped with a 36,6 m (120') No. 55 or No. 55A tubular-chord boom consisting of a 6,1 m (20') No. 55 or No. 55A butt, 3,0 m (10') No. 55 or No. 55A insert, 6,1 m (20') No. 55 or No. 55A insert, 12,2 m (40') No. 55 or No. 55A insert with equalizer platform, and 9,1 m (30') No. 55 or No. 55A heavy-lift top with sixteen 762 mm (30") diameter roller bearing sheaves on one shaft. Includes rope guides, boom angle indicator, and a 27,2 mT (30 ton) swivel hook and weight ball weighing 1 270 kgs (2,800 lbs.). The No. 55 or No. 55A boom utilizes steel suspension straps and Manitowoc's patented, exclusive FACT™ connection system.

Powered boom hinge system including cylinder, piping, operating controls, and locking device are standard.

Luffing jib preparation is standard.

- ▶ Optional: 6,1 m (20'), 12,2 m (40') No. 55 or No. 55A boom inserts, and 12,2 m (40') No. 55 or No. 55A medium boom inserts with steel boom suspension straps, and FACT™ connection system.
 - ▶ Optional: 12,2 m (40') No. 55 or No. 55A boom insert with luffing drum sheaves, steel boom suspension straps, and FACT™ connection system.
 - ▶ Optional: Detachable upper boom point with one 762 mm (30") diameter tapered roller bearing steel sheave with rope guard, for liftcrane use on heavy-lift boom top. (Same upper point used on Models 555, 777, 777T, 888, M-250, and 2250.)
 - ▶ Optional: Detachable upper boom point with one 762 mm (30") diameter tapered roller bearing steel sheave with rope guard, for liftcrane use on No. 55 boom top or 79A luffing jib top.
- Utilize optional boom inserts in combination with the No. 55 or No. 55A basic boom for total lengths up to 97,5 m (320').

specifications

6



No. 44 Luffing Jib

Optional: Components to make up 21,3 m (70') basic luffing jib include a 12,2 m (40') No. 44 butt, 9,1 m (30') No. 44 top, 15,2 m (50') jib strut with 7 sheaves, 14,3 m (47') main strut with 7 sheaves, jib strut stop, luffing jib stop, main luffing strut backstay straps, basic luffing jib steel rigging straps, combination upper point and luffing jib raising wheel, luffing drum assembly, 495 m (1625') luffing drum wire rope, and wire rope guide(s) as required

Optional: 3,0 m (10'), 6,1 m (20'), and 12,2 m (40') No. 44 inserts with pendants.

Utilize optional luffing jib inserts in combination with the No. 44 basic luffing jib for total lengths up to 73,1 m (240').

Note: Basic luffing jib 12,2 m (40') No. 44 boom butt and 9,1 m (30') No. 44 boom top can be used from 2250 liftcrane. Luffing jib also uses No. 44 boom inserts and straps from 2250 liftcrane for luffing jib lengths greater than 21,3 m (70').



No. 79A Luffing Jib

Optional: Components to make up 21,3 m (90') basic luffing jib includes a 6,1 m (20') No. 79A butt, 12,2 m (40') No. 79 insert, 9,1 m (30') No. 79A top, jib strut, main strut, main jib strut stop, luffing jib stop, main luffing strut backstay straps, basic luffing jib steel rigging straps, upper point, luffing jib raising dolly, luffing drum assembly, luffing drum wire rope, and wire rope guide(s) as required.

Optional: 6,1 m (20'), and 12,2 m (40') No. 79 inserts with steel boom suspension straps, and FACT™ connection system.

Utilize optional luffing jib inserts in combination with the No. 79A basic luffing jib for total lengths up to 94,5 m (310').

Note: Basic luffing jib 9,1 m (30') No. 79A boom top can be used from No. 55-79A boom. Luffing jib also uses No. 79 boom inserts and straps from MAX-ER 2000 liftcrane.



No. 79A Fixed Jib

Optional: Components to make up 15,2 m (50') basic fixed jib includes a 6,1 m (20') No. 79A butt, 9,1 m (30') No. 79A top, jib strut, backstay straps and jib support straps.

Optional: 6,1 m (20'), and 12,2 m (40') No. 79 inserts with steel boom suspension straps, and FACT™ connection system.

Utilize optional fixed jib inserts in combination with the No. 79A basic fixed jib for total lengths up to 33,5 m (110').

Note: Basic fixed jib 9,1 m (30') No. 79A boom top can be used from No. 55-79A boom. Fixed jib also uses No. 79 boom inserts and straps from MAX-ER 2000 liftcrane.



The MAX-ER

The MAX-ER™ attachment components include:

One 12,2 m (40') No. 56 insert, added to increase the mast length to 42,7 m (140').

Two additional swing drives (for a total of four) mounted on the rotating module. Each swing drive is powered by a fixed-displacement hydraulic motor coupled to a planetary reduction gearbox and internal brake.

A wheeled or hanging MAX-ER™ counterweight assembly attaches to the top of the mast by steel straps and to the rear of the upperworks by a shear-frame and to the top of the moving mast by steel straps for the 12,1 m (40') counterweight position.

The hanging MAX-ER™ counterweights is 18 m (59') behind the crane's centerline of rotation, and the wheeled MAX-ER™ counterweight is 12,1 m (40') or 18 m (59') behind the crane's centerline of rotation.

The wheeled counterweight uses large off-road tires, which can be positioned for traveling, crabbing, or swinging. It also includes hydraulic support jacks and pads.

Optional Equipment

Optional: Self-erect system, includes: rotating bed jacking cylinders with pads, wireless controls, 91 t (100 ton) assembly block, crawler handling chains.

Optional: Blocks and Hooks

27,2 t (30 USt) swivel hook and weight ball 1 270 kgs (2,800 lb) for 28 mm or 32 mm wire rope.

250 t (275 UST) hook block 3969 kgs (8,750 lbs) with nine 76,2 cm (30") dia. roller bearing sheaves and duplex roller bearing swivel hook with hook latch and swivel lock for 28 mm or 32 mm wire rope.

317 t (350 USt) hook block 7892 kgs (17,400 lbs) with nine 76,2 cm (30") dia. roller bearing sheaves and duplex roller bearing swivel hook with hook latch and swivel lock for 28 mm or 32 mm wire rope.

410 t (450USt) hook block 9661 kgs (21,300 lbs) with thirteen 76,2 cm (30") dia. roller bearing sheaves and duplex roller bearing swivel hook, hook latch, and swivel lock. For 28 mm 32 mm wire rope.

450 t (500 USt) hook block 11113 kgs (24,500 lbs) with fifteen 76,2 cm (30") dia. roller bearing sheaves and duplex roller bearing swivel hook, hook latch and swivel lock for 28 mm or 32 mm wire rope.

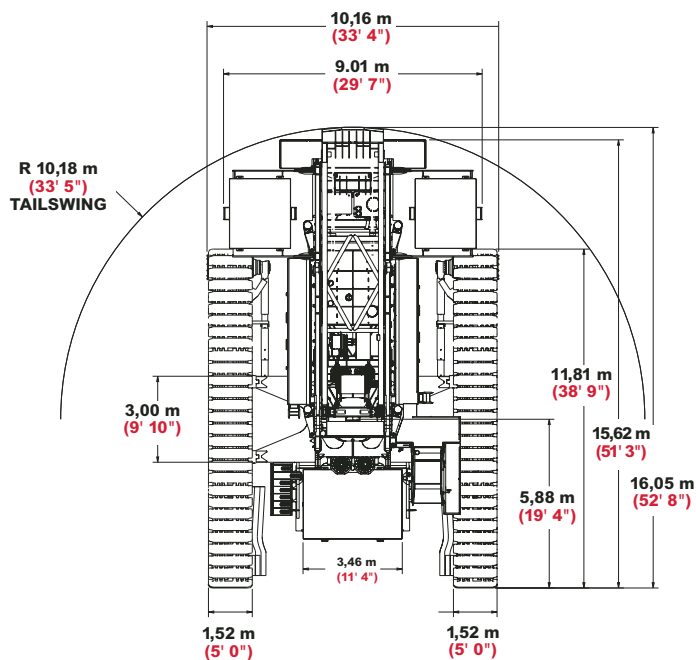
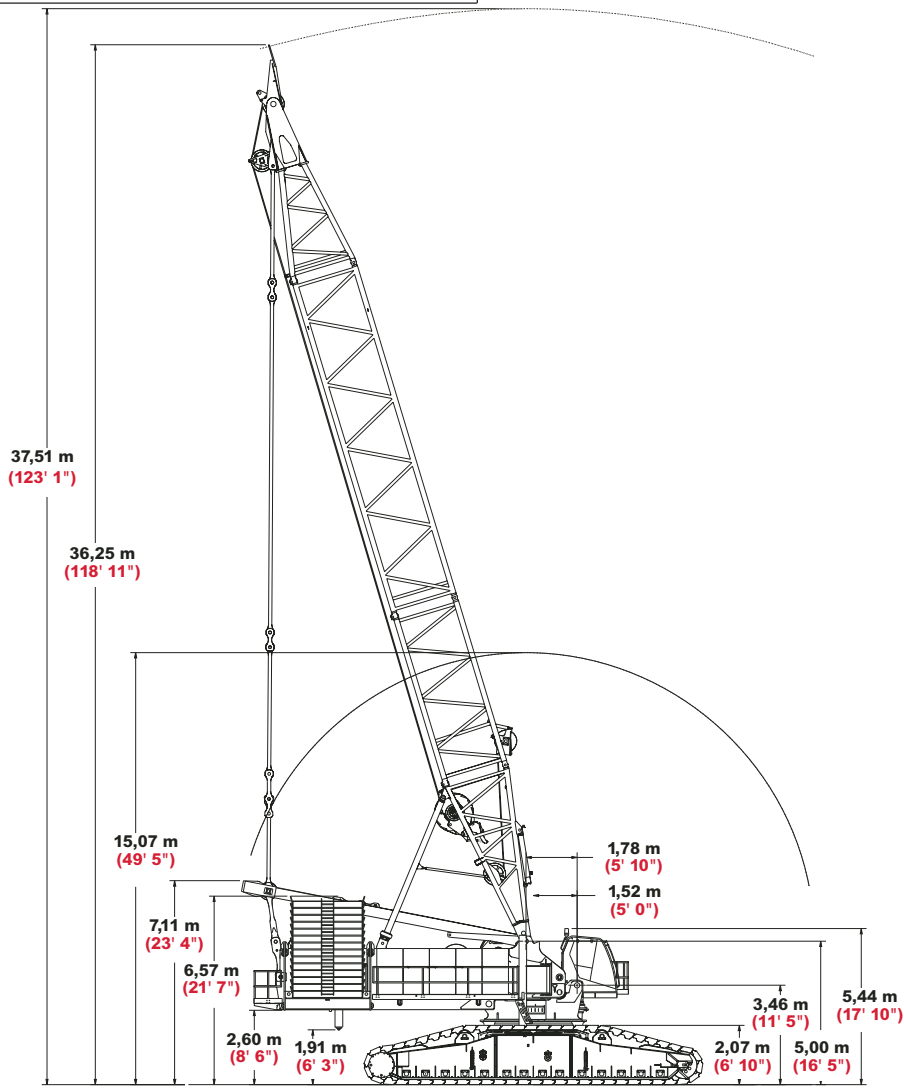
600 t (660 USt) hook block 11385 kgs (25,100 lbs) with fifteen 76,2 cm (30") dia. roller bearing sheaves and duplex roller bearing swivel hook, hook latch and swivel lock for 28 mm or 32 mm wire rope.

700 t (770 USt) hook block 12972 kgs (28,600 lbs) with seventeen 76,2 cm (30") dia. roller bearing sheaves and duplex roller bearing swivel hook, hook latch and swivel lock for 28 mm or 32 mm wire rope.

- ▶ Optional: Preparation for MAX-ER™.
- ▶ Optional: Hydraulic Test Kit: required to properly analyze the performance of the EPIC® control system.
- ▶ Optional: Service Interval Kits: for the regularly scheduled maintenance of general crane operations.
- ▶ Optional: Lighting Packages: consult Factory for available options.
- ▶ Optional: Special Paint – color(s) other than Manitowoc standard red and black.
- ▶ Optional: Custom vinyl decal(s) of customer name and/or logo from artwork supplied by customer.
- ▶ Optional: Export Packaging: basic crane, boom and jib sections. MAX-ER™ export packaging available.

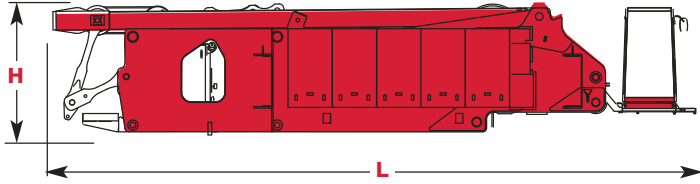
outline dimensions

8



outline dimensions

9

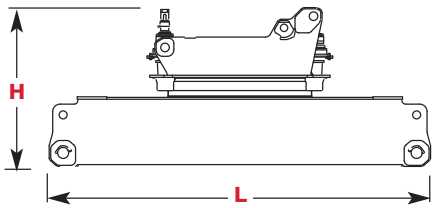


Liftcrane

Length	13,59 m	44' 8"
Width	3,00 m	9' 10"
Height	2,69 m	8' 10"
Weight 1	47 370 kg	104,435 lb
Weight 2	40 068 kg	88,335 lb

Note: Weight 1 includes rotating bed rear section with pin pullers, counterweight, live mast, mast-hoist with wire rope, maximum hoist and whip lines on drums, Cummins QSX15 powerplant upperworks jacking system, full hydraulic fluid reservoir, and half tank of fuel.

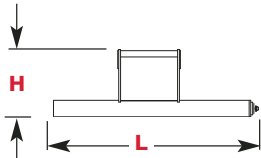
Weight 2 is with upperworks jacking system removed.



Carbody & Rotating Bed

Length	7,89 m	25' 11"
Width	3,00 m	9'10"
Height	3,33 m	11' 0"
Weight	43 499 kg	95,900 lb

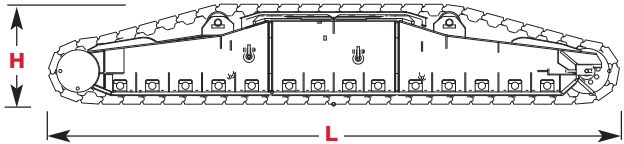
Note: Weight includes rotating bed adapter frame with bearing turntable, four swing drives, and carbody.



Upperworks Jacks x 4

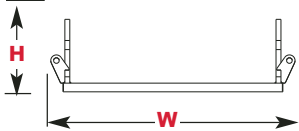
Length	3,29 m	10' 10"
Width	1,14 m	3' 9"
Height	0,31 m	1' 1"
Weight	6 667 kg	14,700 lb

Note: Shown in horizontal, retracted shipping position.



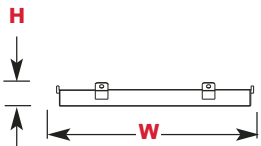
Crawlers x 2

Length	11,81 m	38' 9"
Width	2,20 m	7' 3"
Height	2,07 m	6' 10"
Weight	40 031 kg	88,225 lb



Carbody Counterweight Tray x 2

Length	4,42 m	14' 6"
Width	2,39 m	7' 10"
Height	1,30 m	4' 4"
Weight	12 700 kg	28,000 lb



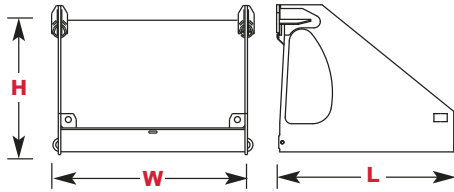
Lower Counterweight x 6

Length	2,59 m	8' 6"
Width	3,56 m	11' 8"
Height	0,51 m	1' 8"
Weight	19 958 kg	44,000 lb

Option

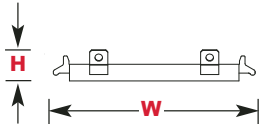
outline dimensions

10



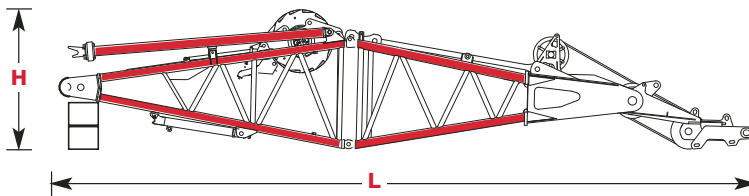
Upper Counterweight Tray x 2

Length	2,84 m	9' 4"
Width	3,24 m	10' 8"
Height	2,38 m	7' 10"
Weight	5 465 kg	12,050 lb



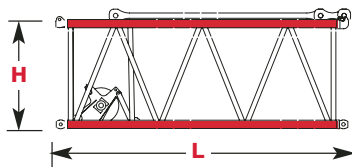
Upper Counterweight x 28

Length	2,54 m	8' 4"
Width	2,61 m	8' 7"
Height	0,41 m	1' 4"
Weight	8 164 kg	18,000 lb



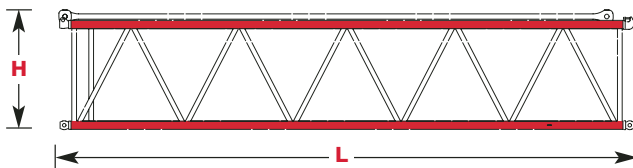
No. 56 Mast Butt & Top Package, Drum, Wire Rope, Equalizer x 1

Length	15,11 m	49' 7"
Width	3,00 m	9' 10"
Height	2,79 m	9' 2"
Weight	26 251 kg	57,875 lb



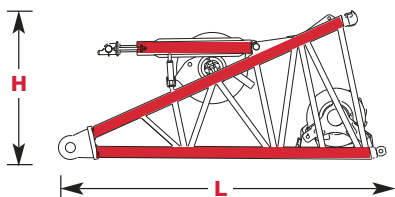
No. 56 Mast Insert 6,1 m (20') & Straps x 1

Length	6,30 m	20' 8"
Width	3,00 m	9' 10"
Height	2,49 m	8' 2"
Weight	6 123 kg	13,500 lb



No. 56 Mast Insert 12,2 m (40') & Straps x 1

Length	12,45 m	40' 10"
Width	3,00 m	9' 10"
Height	2,49 m	8' 2"
Weight	8 085 kg	17,825 lb

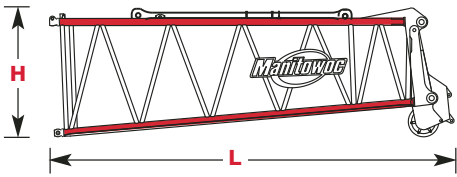


No. 55 or No. 55A Boom Butt 6,1 m (20') with Drum, Rigging Winch & Wire Rope x 1

Length	6,62 m	21' 9"
Width	3,00 m	9' 10"
Height	3,10 m	10' 2"
Weight	26 251 kg	57,875 lb

■ Option

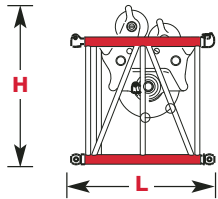
outline dimensions



No. 55 or No. 55A Boom Top 9,1 m (30') x 1

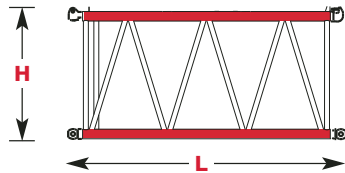
Length	10,09 m	33' 2"
Width	3,00 m	9' 10"
Height	3,10 m	10' 2"
Weight	17137 kg	37,781 lb

11



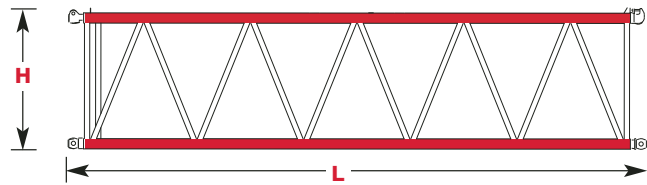
No. 55 or No. 55A Boom Insert 3,0 m (10') with Drum & Wire Rope x 1

Length	6,35 m	20' 10"
Width	3,00 m	9' 10"
Height	3,10 m	10' 2"
Weight	16,057 kg	35,400 lb



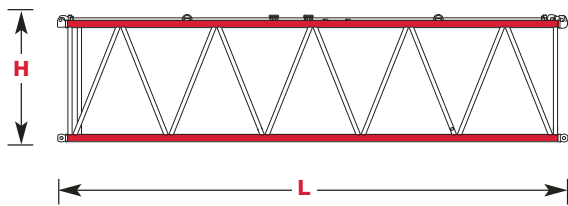
No. 55 or No. 55A Boom Insert 6,1 m (20') x 1

Length	6,35 m	20' 10"
Width	3,00 m	9' 10"
Height	3,10 m	10' 2"
Weight	5 026 kg	11,085 lb



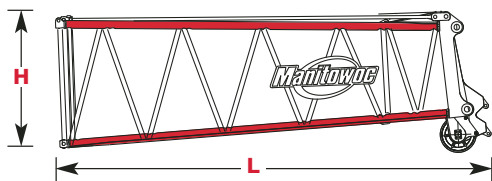
No. 55 or No. 55A Boom Insert 12,2 m (40') x 1

Length	12,37 m	40' 7"
Width	3,00 m	9' 10"
Height	3,10 m	10' 2"
Weight	9,370 kg	20,660 lb



No. 55/79A Transition Insert & Straps 12,2 m (40') x 1

Length	12,37 m	40' 7"
Width	3,00 m	9' 10"
Height	3,10 m	10' 2"
Weight	5 438 kg	11,988 lb



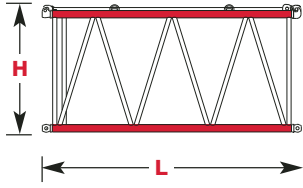
No. 79A Boom Top 6,1 m (20') x 1

Length	10,05 m	33' 0"
Width	3,00 m	9' 10"
Height	3,10 m	10' 2"
Weight	11 774 kg	24,958 lb

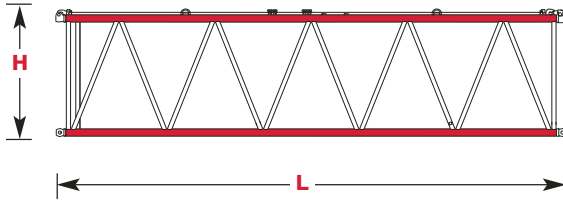
Option

outline dimensions

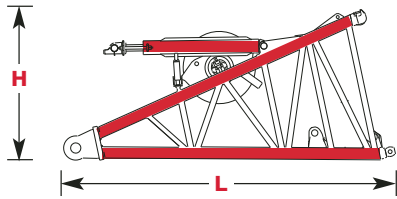
12



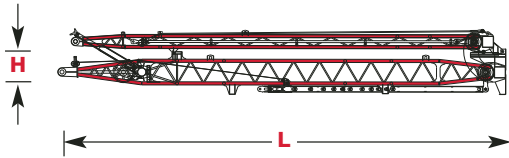
No. 79 Boom Insert 6,1 m (20') x 1		
Length	6,27 m	20' 7"
Width	3,00 m	9' 10"
Height	3,09 m	10' 2"
Weight	3 252kg	7,170 lb



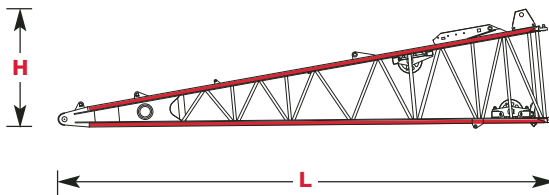
No. 79 Boom Insert 12,2 m (40') x 1		
Length	12,37 m	40' 7"
Width	3,00 m	9' 10"
Height	3,09 m	10' 2"
Weight	5 438 kg	11,988 lb



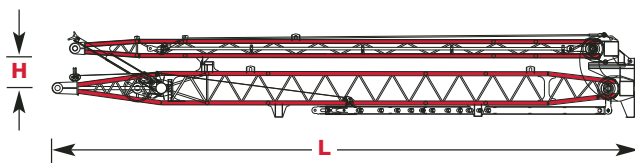
No. 79 Luffing Jib Butt 9,1 m (30') x 1		
Length	6,63 m	21' 9"
Width	3,00 m	9' 10"
Height	3,09 m	10' 2"
Weight	13 527 kg	29,822 lb



No. 79 Luffing Jib Main Masts 12,2 m (40') x 1		
Length	16,15 m	53' 0"
Width	2,51 m	8' 3"
Height	2,36 m	7' 9"
Weight	10 544 kg	23,245 lb



No. 44 Luffing Jib Butt 12,2 m (40') x 1		
Length	12,78 m	41' 11"
Width	3,00 m	9' 10"
Height	3,00 m	9' 10"
Weight	5 194 kg	11,450 lb

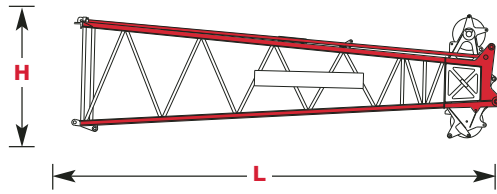


No. 44 Luffing Jib Masts 12,2 m (40') x 1		
Length	16,15 m	53' 0"
Width	2,51 m	8' 3"
Height	2,36 m	7' 9"
Weight	10 544 kg	23,245 lb

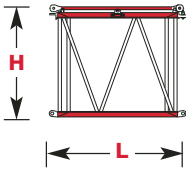
Option

outline dimensions

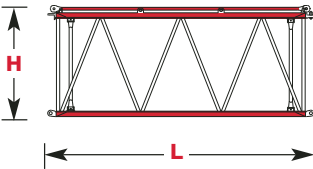
13



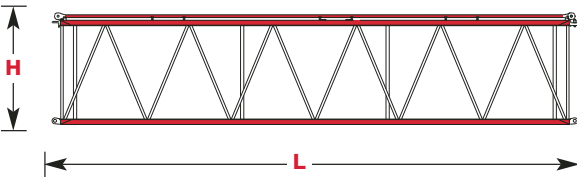
No. 44 Boom Top 9,1 m (30') & Wire Rope Guide, Straps, Lower Point x 1		
Length	10,06 m	33' 0"
Width	2,59 m	8' 6"
Height	2,90 m	9' 6"
Weight	5 657 kg	12,475 lb



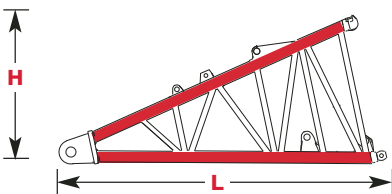
No. 44 Luffing Jib Insert 3,0 m (10') x 1		
Length	3,23 m	10' 7"
Width	2,59 m	8' 6"
Height	2,59 m	8' 6"
Weight	1 015 kg	2,240 lb



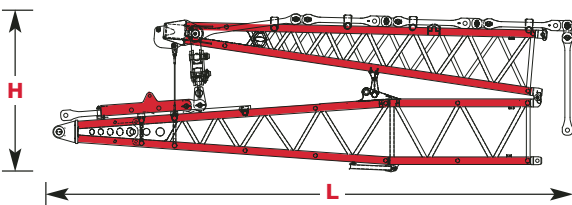
No. 44 Luffing Jib Insert 6,1 m (20') x 1		
Length	6,28 m	20' 7"
Width	2,59 m	8' 6"
Height	2,59 m	8' 6"
Weight	1 724 kg	3,805 lb



No. 44 Luffing Jib Insert 12,2 m (40') x 1		
Length	12,38 m	40' 7"
Width	2,59 m	8' 6"
Height	2,59 m	8' 6"
Weight	2 846 kg	6,500 lb



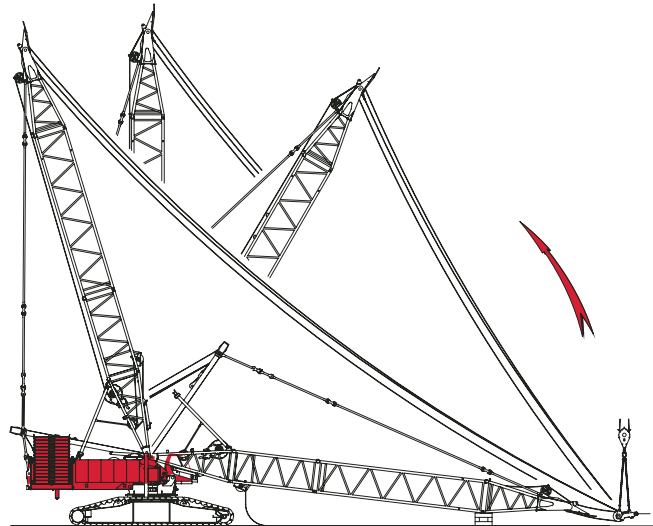
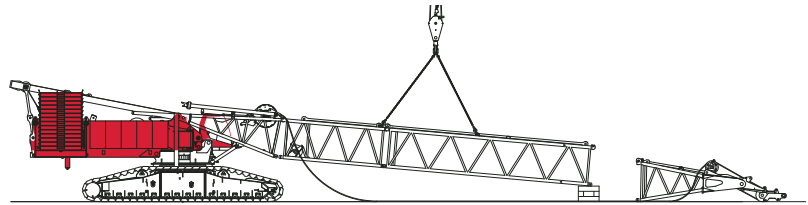
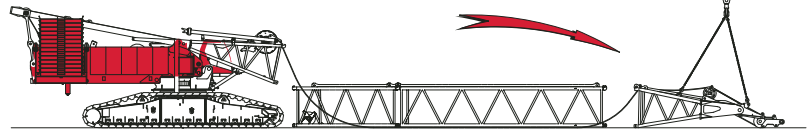
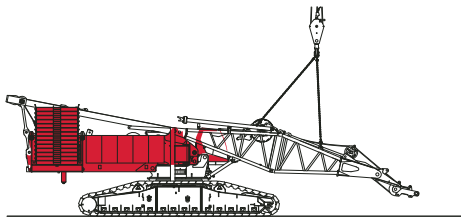
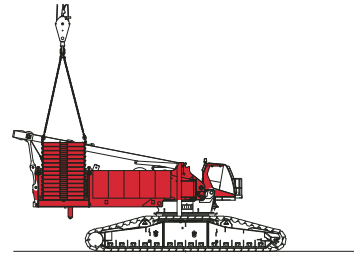
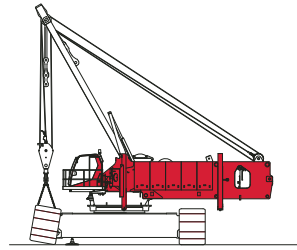
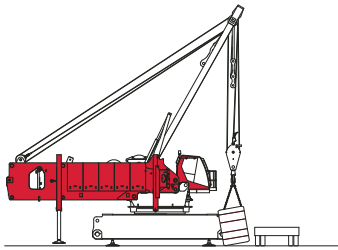
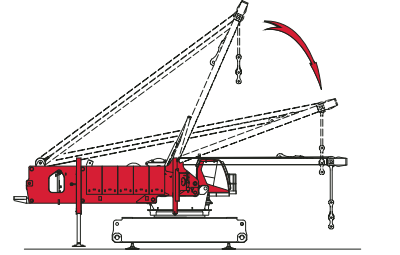
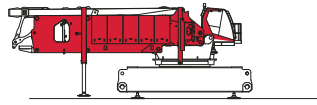
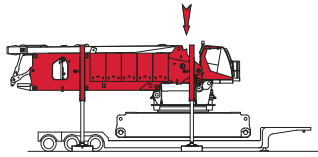
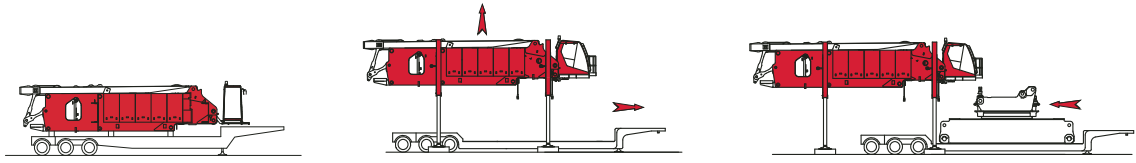
No. 79A Fixed Jib Butt 6,1 m (20') x 1		
Length	6,52 m	21' 5"
Width	3,00 m	9' 10"
Height	3,02 m	9' 11"
Weight	4 482 kg	9,880 lb



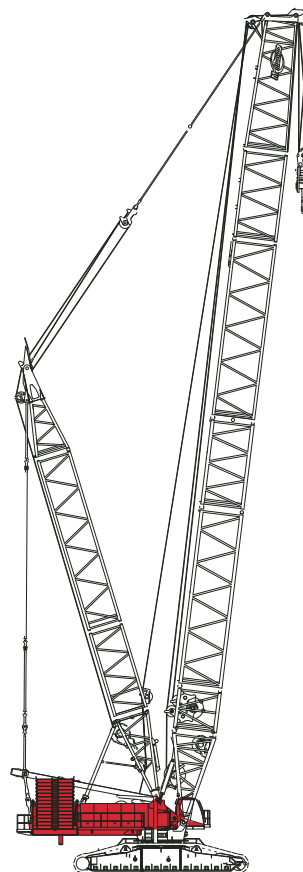
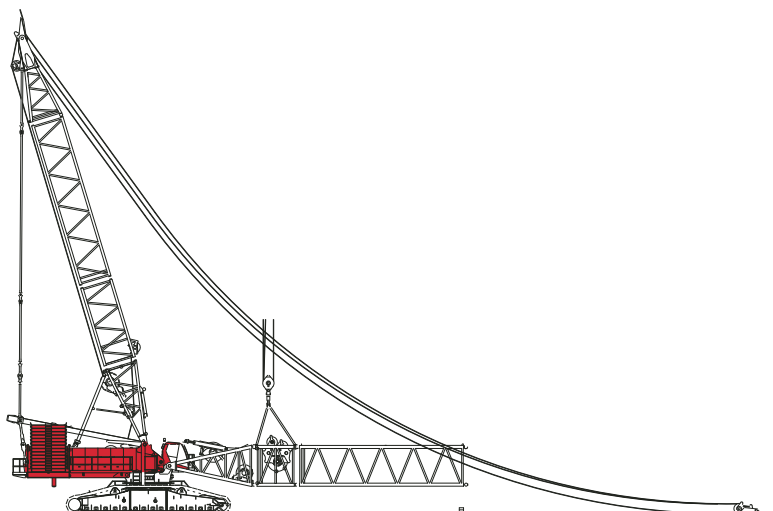
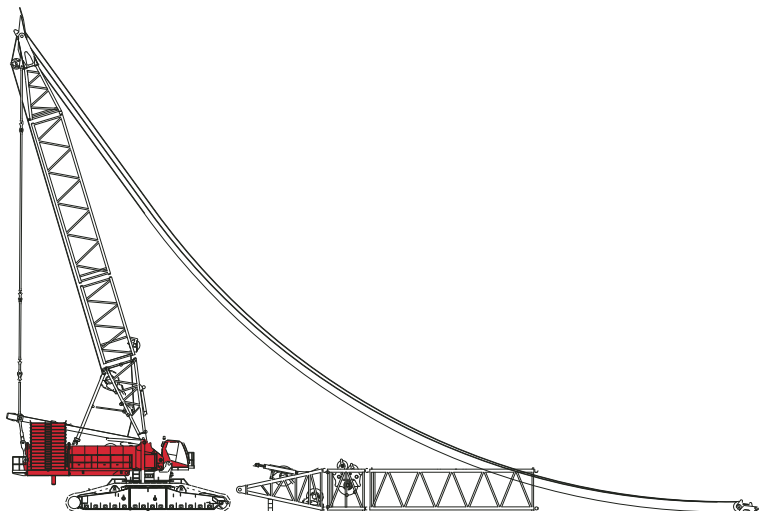
No. 79A Fixed Jib Strut 12,2 m (40') x 1		
Length	9,61 m	31' 6"
Width	2,97 m	9' 9"
Height	2,92 m	9' 7"
Weight	7 622 kg	16,802 lb

crane assembly

14



boom assembly



performance data

16

Wire Rope Lengths - Tandem Drums - 28 mm Hoist Line Boom No. 55 or No. 55A

Boom or Boom and Fixed Jib Length	Whip Line				Hoist Line				Total Parts of Line
	Drum 3 (1 Part of Line)		Drum 3 (2 Parts of Line)		Drum 1		Drum 2		
	m	(ft)	m	(ft)	m	(ft)	m	(ft)	
36,6 (120)	91	(300)	130	(425)	579	(1900)	579	(1900)	28
42,7 (140)	99	(325)	145	(475)	671	(2200)	671	(2200)	28
48,8 (160)	114	(375)	168	(550)	762	(2500)	762	(2500)	28
54,9 (180)	122	(400)	183	(600)	853	(2800)	853	(2800)	28
61,0 (200)	137	(450)	206	(675)	853	(2800)	853	(2800)	24
67,1 (220)	152	(500)	221	(725)	914	(3000)	914	(3000)	24
73,2 (240)	160	(525)	236	(775)	975	(3200)	975	(3200)	24
79,2 (260)	175	(575)	259	(850)	975	(3200)	975	(3200)	20
85,3 (280)	183	(600)	274	(900)	975	(3200)	975	(3200)	20
91,4 (300)	198	(650)	297	(975)	975	(3200)	975	(3200)	16
97,5 (320)	213	(700)	312	(1025)	975	(3200)	975	(3200)	16

NOTE: Above hoist line lengths are based on tandem drums both reeved to the main load block. Each drum is dead-ended in main load block reeving. Total parts of line requires using both drums 1 and 2. Hoist and whip line lengths will allow hook to touch ground. When block travel below ground is required, add additional rope equal to parts of the line times the added travel distance. Hoisting distance or line pull may be limited when block travel below ground is required.

Hoist Reeving for Main Load Block Two Lead Lines - 28 mm Boom No. 55 or No. 55A

No. Parts of Line	Maximum Load kg	Maximum Load (lb)
8	130 180	287,000
12	195 270	430,500
16	260 360	574,000
20	325 500	717,600
24	390 540	861,000
28	455 600	1,004,600

Wire Rope Lengths - Single Hoist Drum - 28 mm Hoist Line Boom No. 55 or No. 55A

Boom Length	Whip Line - Drum 2 or 3				Hoist Line - Drum 1		Maximum Parts of Line For Full Hoisting Range
	1 Part		2 Part				
	m	(ft)	m	(ft)	m	(ft)	
36,6 (120)	91	(300)	130	(425)	1189	(3900)	30
42,7 (140)	99	(325)	145	(475)	1372	(4500)	30
48,8 (160)	114	(375)	168	(550)	1463	(4800)	28
54,9 (180)	122	(400)	183	(600)	1463	(4800)	24
61,0 (200)	137	(450)	206	(675)	1463	(4800)	22
67,1 (220)	152	(500)	221	(725)	1463	(4800)	20
73,2 (240)	160	(525)	236	(775)	1463	(4800)	18
79,2 (260)	175	(575)	259	(850)	1463	(4800)	16
85,3 (280)	183	(600)	274	(900)	1463	(4800)	14
91,4 (300)	198	(650)	297	(975)	1463	(4800)	14
97,5 (320)	213	(700)	312	(1025)	1463	(4800)	12

NOTE: Above hoist line lengths are based on single part lead line. Hoist and whip line lengths will allow hook to touch ground. When block travel below ground is required, add additional rope equal to parts of the line times the added travel distance. Hoisting distance or line pull may be limited when block travel below ground is required.

Hoist Reeving for Main Load Block Single Lead Line - 28 mm Boom No. 55 or No. 55A

No. Parts of Line	Maximum Load kg	Maximum Load (lb)
2	32 520	71,700
4	65 090	143,500
6	97 610	215,200
8	130 180	287,000
10	162 750	358,800
12	195 270	430,500
14	227 840	502,300
16	258 000	568,800
18	287 440	633,700
20	316 290	697,300
22	344 550	759,600
24	372 260	820,700
26	399 430	880,600
28	426 060	939,300
30	452,600	996,800

performance data

Wire Rope Lengths - Tandem Drums - 32 mm Hoist Line Boom No. 55 or No. 55A

Boom Length	Whip Line				Hoist Line				Total Parts of Line
	Drum 3 (1 Part of Line)		Drum 3 (2 Parts of Line)		Drum 1		Drum 2		
	m	(ft)	m	(ft)	m	(ft)	m	(ft)	
36,6 (120)	91	(300)	130	(425)	579	(1900)	579	(1900)	28
42,7 (140)	99	(325)	145	(475)	579	(1900)	579	(1900)	24
48,8 (160)	114	(375)	168	(550)	671	(2200)	671	(2200)	24
54,9 (180)	122	(400)	183	(600)	671	(2200)	671	(2200)	20
61,0 (200)	137	(450)	206	(675)	701	(2300)	701	(2300)	20
67,1 (220)	152	(500)	221	(725)	701	(2300)	701	(2300)	16
73,2 (240)	160	(525)	236	(775)	701	(2300)	701	(2300)	16
79,2 (260)	175	(575)	259	(850)	732	(2400)	732	(2400)	16
85,3 (280)	183	(600)	274	(900)	792	(2600)	792	(2600)	16
91,4 (300)	198	(650)	297	(975)	792	(2600)	792	(2600)	12
97,5 (320)	213	(700)	312	(1025)	792	(2600)	792	(2600)	12

NOTE: Above hoist line lengths are based on tandem drums both reeved to the main load block. Each drum is dead-ended in main load block reeving. Total parts of line requires using both drums 1 and 2. Hoist and whip line lengths will allow hook to touch ground. When block travel below ground is required, add additional rope equal to parts of the line times the added travel distance. Hoisting distance or line pull may be limited when block travel below ground is required.

Hoist Reeving for Main Load Block Two Lead Lines - 32 mm Boom No. 55 or No. 55A

No. Parts of Line	Maximum Load	
	kg	(lb)
8	177 080	390,400
12	265 620	585,600
16	354 160	780,800
20	442 710	976,000
24	531 250	1,171,200
28	600 000	1,322,800

Wire Rope Lengths - Single Hoist Drum - 32 mm Hoist Line Boom No. 55 or No. 55A

Boom Length	Whip Line - Drum 2 or 3				Hoist Line - Drum 1		Maximum Parts of Line For Full Hoisting Range
	1 Part		2 Part				
	m	(ft)	m	(ft)	m	(ft)	
36,6 (120)	91	(300)	130	(425)	1128	(3700)	28
42,7 (140)	99	(325)	145	(475)	1128	(3700)	24
48,8 (160)	114	(375)	168	(550)	1128	(3700)	20
54,9 (180)	122	(400)	183	(600)	1128	(3700)	18
61,0 (200)	137	(450)	206	(675)	1128	(3700)	16
67,1 (220)	152	(500)	221	(725)	1128	(3700)	14
73,2 (240)	160	(525)	236	(775)	1128	(3700)	14
79,2 (260)	175	(575)	259	(850)	1128	(3700)	12
85,3 (280)	183	(600)	274	(900)	1128	(3700)	12
91,4 (300)	198	(650)	297	(975)	1128	(3700)	10
97,5 (320)	213	(700)	312	(1025)	1128	(3700)	10

NOTE: Above hoist line lengths are based on single part lead line. Hoist and whip line lengths will allow hook to touch ground. When block travel below ground is required, add additional rope equal to parts of the line times the added travel distance. Hoisting distance or line pull may be limited when block travel below ground is required.

Hoist Reeving for Main Load Block Single Lead Line - 32 mm Boom No. 55 or No. 55A

No. Parts of Line	Maximum Load	
	kg	(lb)
2	44 270	97,600
4	88 540	195,200
6	132 810	292,800
8	177 080	390,400
10	221 350	488,000
12	265 620	585,600
14	309 890	683,200
16	354 160	780,800
18	398 430	878,400
20	442 710	976,000
22	486 980	1,073,600
24	531 250	1,171,200
26	575 520	1,268,800
28	619 790	1,366,400

performance data

18

Wire Rope Specifications 5:1 Safety Factor - 32 mm Hoist Line - Boom No. 55 or No. 55A

Function	Rotation Resistant, Right Hand Lang Lay Wire Rope with Spelter Button (except 719425) and Pad Eye		
	Hoist Line (Drum 1)	Hoist or Whip Line (Drum 2)	Whip Line (Drum 3)
MCC Part Number	A06005	A06005	719425
Size Wire Rope	32 mm	32 mm	28 mm
Minimum Breaking Strength	110 680 kg (244,000 lb)	110 680 kg (244,000 lb)	81 370 kg (179,400 lb)
Maximum Load Per Line		22 140 kg (48,800 lb)	13 610 kg (30,000 lb)
Approximate Weight	5.57 kg/m (3.74 lb/ft)	5.57 kg/m (3.74 lb/ft)	4.11 kg/m (2.76 lb/ft)

Maximum Spooling Capacities

Drum 1 (Hoist Line) 32 mm Wire Rope*	1 015 m (3,330 ft) 9 Layers
Drum 2 (Hoist or Whip Line) (32 mm) Wire Rope*	1 015 m (3,330 ft) 9 Layers
Drum 3 (Whip Line) 28 mm Wire Rope	579 m (1,900 ft) 8 Layers

*7 m (23 ft) is deducted from maximum spooling capacities for 3 dead wraps per drum.

Refer to Drum and Lagging Chart No. 8512-A and Load Block Reeving Folio No. 2032

Wire Rope Lengths - Single Hoist Drum - 28 mm Hoist Line Boom No. 55-79A

Boom Length	Whip Line - Drum 2 or 3				Hoist Line - Drum 1		Maximum Parts of Line For Full Hoisting Range
	1 Part		2 Part				
m (ft)	m (ft)	m (ft)	m (ft)	m (ft)	m (ft)		
36,6 (120)	91 (300)	130 (425)	1189 (3900)			30	
42,7 (140)	99 (325)	145 (475)	1372 (4500)			30	
48,8 (160)	114 (375)	168 (550)	1463 (4800)			28	
54,9 (180)	122 (400)	183 (600)	1463 (4800)			24	
61,0 (200)	137 (450)	206 (675)	1463 (4800)			22	
67,1 (220)	152 (500)	221 (725)	1463 (4800)			20	
73,2 (240)	160 (525)	236 (775)	1463 (4800)			18	
79,2 (260)	175 (575)	259 (850)	1463 (4800)			16	
85,3 (280)	183 (600)	274 (900)	1463 (4800)			14	
91,4 (300)	198 (650)	297 (975)	1463 (4800)			12	
97,5 (320)	213 (700)	312 (1025)	1463 (4800)			12	
103,6 (340)	221 (725)	328 (1075)	1463 (4800)			10	
109,7 (360)	236 (775)	351 (1150)	1463 (4800)			10	
115,8 (380)	244 (800)	366 (1200)	1463 (4800)			8	
121,9 (400)	259 (850)	389 (1275)	1463 (4800)			8	

NOTE: Hoist and whip line lengths will allow hook to touch ground. When block travel below ground is required, add additional rope equal to parts of the line times the added travel distance. Hoisting distance or line pull may be limited when block travel below ground is required.

Hoist Reeving for Main Load Block Single Lead Line - 28 mm Boom No. 55-79A

No. Parts of Line	Maximum Load kg	Maximum Load (lb)
2	32 520	71,700
4	65 090	143,500
6	97 610	215,200
8	130 180	287,000
10	162 750	358,800
12	195 270	430,500
14	227 840	502,300
16	258 000	568,800
18	287 440	633,700
20	316 290	697,300
22	344 550	759,600
24	372 260	820,700
26	399 430	880,600
28	426 060	939,300
30	453 500	1,000,000

performance data

Wire Rope Specifications 5:1 Safety Factor - 28 mm Boom No. 55 or No. 55A and Boom No. 55-79A

Function	Rotation Resistant, Right Hand Lang Lay Wire Rope with Pad Eye		
	Hoist Line (Drum 1)	Hoist or Whip Line (Drum 2)	Whip Line (Drum 3)
MCC Part Number	719425	719425	719425
Size Wire Rope	28 mm	28 mm	28 mm
Minimum Breaking Strength	81 370 kg (179,400 lb)	81 370 kg (179,400 lb)	81 370 kg (179,400 lb)
Maximum Load Per Line		16 240 kg (35,800 lb)	13 610 kg (30,000 lb)
Approximate Weight	4.11 kg/m (2.76 lb/ft)	4.11 kg/m (2.76 lb/ft)	4.11 kg/m (2.76 lb/ft)

Maximum Spooling Capacities

Drum 1 (Hoist Line) 28 mm Wire Rope*	1 440 m (4,723 ft) 11 Layers
Drum 2 (Hoist or Whip Line) (28 mm) Wire Rope*	1 440 m (4,723 ft) 11 Layers
Drum 3 (Whip Line) 28 mm Wire Rope	579 m (1,900 ft) 8 Layers

*7 m (23 ft) is deducted from maximum spooling capacities for 3 dead wraps per drum.

Refer to Drum and Lagging Chart No. 8512-A and Load Block Reeving Folio No. 2003 for Boom No. 55 or 55A.

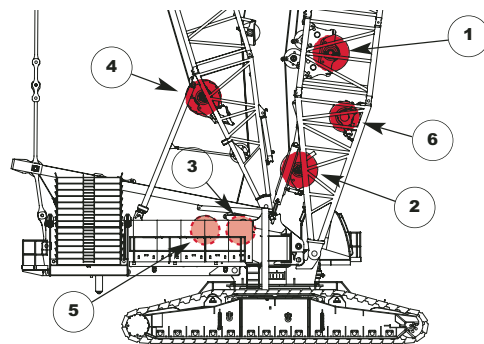
Refer to Drum and Lagging Chart No. 8512-A and Load Block Reeving Folio No. 2032 for Boom No. 55-79A.

Drum And Lagging Chart - Liftcrane

Application	Drum Number and Location	Drum Part Number	Drum Type	Drum Diameter	Drum Width	Grooved Lagging Part Number	Lagging Diameter	Minimum Wire Rope Size
Hoist	Drum 1 (Boom Insert)	A05163	Bare	645 mm (25-3/8")	1248 mm (49-1/8")	A05084	714 mm (28-1/8")	28 mm
						A05085	714 mm (28-1/8")	32 mm
Hoist or Whip	Drum 2 (Boom Butt)	A05163	Bare	645 mm (25-3/8")	1248 mm (49-1/8")	A05084	714 mm (28-1/8")	28 mm
						A05085	714 mm (28-1/8")	32 mm
Whip	Drum 3 (Rotating Bed)	A05302	Grooved	641 mm (25-1/4")	822 mm (32-3/8")			28 mm

Drum Identification

Drum Number	Function
1	Main Load Drum - Standard
2	Main/Auxiliary Load Drum - Standard
3	Whip Hoist - Standard
4	Boom Hoist - Standard
5	Mast Hoist - Standard
6	Luffing Jib Drum - Optional
7	Rigging Winch - Optional (not shown, located in insert)



performance data

20

Wire Rope Lengths - Single Hoist Drum - 32 mm Hoist Line Boom No. 55-79A

Boom Length	Whip Line - Drum 2 or 3				Hoist Line - Drum 1		Maximum Parts of Line For Full Hoisting Range
	1 Part		2 Part				
	m (ft)	m (ft)	m (ft)	m (ft)	m (ft)	m (ft)	
36,6 (120)	91 (300)	130 (425)	884 (2900)			22	
42,7 (140)	99 (325)	145 (475)	1036 (3400)			22	
48,8 (160)	114 (375)	168 (550)	1067 (3500)			20	
54,9 (180)	122 (400)	183 (600)	1097 (3600)			18	
61,0 (200)	137 (450)	206 (675)	1097 (3600)			16	
67,1 (220)	152 (500)	221 (725)	1097 (3600)			14	
73,2 (240)	160 (525)	236 (775)	1128 (3700)			14	
79,2 (260)	175 (575)	259 (850)	1128 (3700)			12	
85,3 (280)	183 (600)	274 (900)	1128 (3700)			10	
91,4 (300)	198 (650)	297 (975)	1128 (3700)			10	
97,5 (320)	213 (700)	312 (1025)	1128 (3700)			10	
103,6 (340)	221 (725)	328 (1075)	1128 (3700)			8	
109,7 (360)	236 (775)	351 (1150)	1128 (3700)			6	
115,8 (380)	244 (800)	366 (1200)	1128 (3700)			6	
121,9 (400)	259 (850)	389 (1275)	1128 (3700)			6	

NOTE: Hoist and whip line lengths will allow hook to touch ground. When block travel below ground is required, add additional rope equal to parts of the line times the added travel distance. Hoisting distance or line pull may be limited when block travel below ground is required.

Wire Rope Specifications 5:1 Safety Factor - 32 mm Hoist Line - Boom No. 55-79A

Function	Rotation Resistant, Right Hand Lang Lay Wire Rope with Spelter Button (except 719425) and Pad Eye		
	Hoist Line (Drum 1)	Hoist or Whip Line (Drum 2)	Whip Line (Drum 3)
MCC Part Number	A06005	A06005	719425
Size Wire Rope	32 mm	32 mm	28 mm
Minimum Breaking Strength	110 680 kg (244,000 lb)	110 680 kg (244,000 lb)	81 370 kg (179,400 lb)
Maximum Load Per Line		22 140 kg (48,800 lb)	13 610 kg (30,000 lb)
Approximate Weight	5.57 kg/m (3.74 lb/ft)	5.57 kg/m (3.74 lb/ft)	4.11 kg/m (2.76 lb/ft)

Maximum Spooling Capacities

Drum 1 (Hoist Line) 32 mm Wire Rope*	1 015 m (3,330 ft) 9 Layers
Drum 2 (Whip Line) 32 mm Wire Rope*	1 015 m (3,330 ft) 9 Layers
Drum 3 (Whip Line) 28 mm Wire Rope	579 m (1,900 ft) 8 Layers

*7 m (23 ft) is deducted from maximum spooling capacities for 3 dead wraps per drum.

Refer to Drum and Lagging Chart No. 8512-A and Load Block Reeving Folio No. 2032

Hoist Reeving for Main Load Block Single Lead Line - 32 mm Boom No. 55-79A

No. Parts of Line	Maximum Load	
	kg	(lb)
2	44 270	97,600
4	88 540	195,200
6	132 810	292,800
8	177 080	390,400
10	221 350	488,000
12	265 620	585,600
14	309 890	683,200
16	350 900	773,600
18	390 950	861,900
20	430 190	948,400
22	453 500	1,000,000

Working Weight

	kg (lb)
30,5 m (100') No. 56 Mast with 36,6 m (120') No. 55 or No. 55A Main Boom, Upper Boom Point, 661 t (600 US t) hook block.	686 611 (1,513,720)
30,5 m (100') No. 56 Mast with 36,6 m (120') No. 55/79A Main Boom Upper Boom Point, 454 t (500 US t) hook block.	670 831 (1,478,930)

Typical working weight includes hydraulic reservoir full, fuel half-full, drums with standard lengths of wire rope, upper boom point and 27 t (30 US t) hook and weight ball.

Hoist Reeving for Jib Load Block Single Lead Line - 28 mm Boom No. 55-79A and No. 55* or No. 55A*

No. Parts of Line	Maximum Load	
	kg	(lb)
2	32 520	71,700
4	65 090	143,500
6	97 610	215,200
8	130 180	287,000
10	162 750	358,800
12	193 410	426,400
14	223 440	492,600
16	250 900	551,200
18*	284 580*	627,400*
20*	295 000*	650,400*

* Only for Boom No. 55 or No. 55A with fixed jib 79A

performance data

21

Wire Rope Lengths - 28 mm Hoist Line Liftcrane - Luffing Jib No. 44 on Boom No. 55-79A

Boom Length Luffing Jib Length	Whip Line - Drum 2 or 3			
	1 Part		2 Part	
	m	(ft)	m	(ft)
64,0 (210)	146	(480)	221	(725)
67,1 (220)	152	(500)	229	(750)
70,1 (230)	158	(520)	236	(775)
73,2 (240)	165	(540)	251	(825)
76,2 (250)	171	(560)	259	(850)
79,2 (260)	177	(580)	267	(875)
73,2 (270)	183	(600)	274	(900)
79,2 (280)	189	(620)	282	(925)
85,3 (290)	195	(640)	290	(950)
91,4 (300)	201	(660)	305	(1000)
94,5 (310)	207	(680)	312	(1025)
97,5 (320)	213	(700)	320	(1050)
100,6 (330)	219	(720)	328	(1075)
103,6 (340)	226	(740)	335	(1100)
106,7 (350)	232	(760)	343	(1125)
109,7 (360)	238	(780)	358	(1175)
112,8 (370)	244	(800)	366	(1200)
115,8 (380)	250	(820)	373	(1225)
118,9 (390)	256	(840)	381	(1250)
121,9 (400)	262	(860)	389	(1275)
125,0 (410)	268	(880)	404	(1325)
128,0 (420)	274	(900)	411	(1350)
131,1 (430)	280	(920)	419	(1375)
134,1 (440)	287	(940)	427	(1400)
137,2 (450)	293	(960)	434	(1425)
140,2 (460)	299	(980)	442	(1450)
143,3 (470)	305	(1000)	457	(1500)
146,3 (480)	311	(1020)	465	(1525)
149,4 (490)	317	(1040)	472	(1550)
152,4 (500)	323	(1060)	480	(1575)
155,5 (510)	329	(1080)	488	(1600)
158,5 (520)	335	(1100)	495	(1625)

NOTE: Whip line lengths given in table will allow hook to touch ground. When hook travel below ground is required, add additional rope equal to parts of the line times the added travel distance. Hoisting distance or line pull may be limited when block travel below ground is required.

Wire Rope Lengths - 28 mm Hoist Line Liftcrane - Luffing Jib No. 44 on Boom No. 55-79A Hoist Line Drum Wire 1280 m (4,200 ft)

Luffing Jib m (ft)	Boom Length m (ft)							
	42,7 (140)	48,8 (160)	54,9 (180)	61,0 (200)	67,1 (220)	73,2 (240)	79,2 (260)	85,4 (280)
21,3 (70)	16	16	14	14	12	12	10	8
24,4 (80)	16	16	14	12	12	10	10	8
27,4 (90)	14	14	12	12	12	10	8	8
30,5 (100)	14	14	12	10	10	10	8	8
33,5 (110)	12	12	10	10	10	8	8	6
36,6 (120)	10	10	10	10	10	8	6	6
39,6 (130)	10	10	10	8	8	8	6	6
42,7 (140)	10	10	10	8	8	8	6	6
45,7 (150)	8	8	8	8	8	6	6	6
48,8 (160)	8	8	8	8	6	6	6	6
51,8 (170)	8	8	8	6	6	6	8	4
54,9 (180)	8	8	6	6	6	6	4	4
57,9 (190)	6	6	6	6	6	6	4	4
61,0 (200)	6	6	6	6	6	4	4	4
64,0 (210)	6	6	6	6	4	4	4	4
67,1 (220)	6	6	6	4	4	4	4	4
70,1 (230)	4	4	4	4	4	4	4	4
73,2 (240)	4	4	4	4	4	4	4	4

NOTE: Whip line lengths given in table will allow hook to touch ground. When block travel below ground is required, add additional rope equal to parts of the line times the added travel distance. Hoisting distance or line pull may be limited when block travel below ground is required.

Boom Length m (ft)					1 Part		2 Part	
	15,2 (50)	21,3 (70)	27,4 (90)	33,5 (110)	m (ft)	m (ft)	m (ft)	
42,7 (140)	20	18	16	14	1250 (4100)	175 (575)	251 (825)	
48,8 (160)	18	16	14	12	1250 (4100)	183 (600)	274 (900)	
54,9 (180)	18	14	12	12	1341 (4400)	198 (650)	290 (950)	
61,0 (200)	16	14	12		1341 (4400)	198 (650)	290 (950)	
67,1 (220)	16				1402 (4600)	198 (650)	290 (950)	

NOTE: Hoist and whip line lengths will allow hook to touch ground. When block travel below ground is required, add additional rope equal to parts of the line times the added travel distance. Hoisting distance or line pull may be limited when block travel below ground is required.

Wire Rope Lengths - Single Hoist Drum - 28 mm Hoist Line Liftcrane - Fixed Jib No. 79A on Boom No. 55 or No. 55A

Boom Length m (ft)	Hoist Line - Drum 1 Maximum Parts of Line												Hoist Line Drum 1 m (ft)
	Jib Length m (ft)												
	27,4 (90)	33,5 (110)	39,6 (130)	45,7 (150)	51,8 (170)	57,9 (190)	64,0 (210)	70,1 (230)	76,2 (250)	82,3 (270)	88,4 (290)	94,5 (310)	
48,8 (160)	16	14	12	12	10	10	10	8	8	6	6	6	1311 (4300)
54,9 (180)	14	14	12	12	10	10	8	8	8	6	6	4	1341 (4400)
61,0 (200)	14	14	12	12	10	10							1433(4700)

NOTE: Above hoist line lengths are based on single part lead line.

performance data

22

Performance for Main Hoist (Drum #1) and also Auxiliary Hoist (Drum #2)
28 mm Wire Rope - 11 Layers Maximum Working - Lagging Groove Root Diameter 28.125"
Single Line Speed in m (ft) per Minute

Layer	1	2	3	4	5	6	7	8	9	10	11
Single Line Pull Radius	371 mm (14.6")	399 mm (15.7")	427 mm (16.8")	455 mm (17.9")	483 mm (19.0")	511 mm (20.1")	538 mm (21.2")	566 mm (22.3")	594 mm (23.4")	625 mm (24.6")	650 mm (25.6")
Single Line Pull kg (lb)											
0 (0)	94 (309)	101 (333)	109 (356)	116 (379)	123 (402)	130 (426)	137 (449)	144 (472)	151 (496)	158 (519)	165 (542)
4 536 (10,000)	90 (295)	96 (316)	103 (337)	109 (358)	115 (378)	122 (399)	128 (419)	134 (439)	140 (459)	146 (479)	152 (498)
9 072 (20,000)	85 (280)	91 (299)	97 (318)	103 (338)	108 (354)	113 (371)	119 (389)	123 (405)	129 (422)	133 (436)	134 (441)
13 607 (30,000)	81 (266)	86 (283)	89 (293)	91 (297)	92 (302)	93 (306)	95 (311)	96 (315)	98 (320)	99 (324)	100 (329)
16 239 (35,800)	75 (247)	77 (252)	78 (256)	80 (261)	81 (265)	82 (270)	84 (274)	85 (279)	86 (283)	88 (288)	89 (292)

Performance for Main Hoist (Drum #1) and also Auxiliary Hoist (Drum #2)
32 mm Wire Rope - 9 Layers Maximum Working - Lagging Groove Root Diameter 28.125"
Single Line Speed in m (ft) per Minute

Layer	1	2	3	4	5	6	7	8	9
Single Line Pull Radius	371 mm (14.6")	406 mm (16.0")	437 mm (17.2")	470 mm (18.5")	500 mm (19.7")	533 mm (21.0")	566 mm (22.3")	570 mm (23.5")	630 mm (24.8")
Single Line Pull kg (lb)									
0 (0)	95 (311)	103 (338)	111 (364)	119 (391)	127 (417)	135 (444)	144 (471)	151 (497)	160 (524)
4 536 (10,000)	90 (296)	98 (320)	105 (344)	112 (368)	119 (391)	126 (415)	134 (438)	140 (460)	147 (483)
9 072 (20,000)	86 (282)	92 (303)	99 (324)	105 (345)	111 (365)	117 (385)	123 (404)	129 (423)	133 (437)
13 607 (30,000)	81 (267)	87 (286)	90 (294)	91 (299)	93 (305)	94 (310)	96 (315)	98 (320)	99 (325)
18 144 (40,000)	69 (228)	71 (233)	73 (238)	74 (243)	76 (248)	77 (254)	79 (259)	80 (264)	78 (256)
22 135 (48,800)	61 (199)	62 (203)	63 (208)	65 (213)	67 (218)	68 (223)	69 (228)	71 (234)	73 (239)

Performance for Whip (Drum #3) - 28 mm Wire Rope
8 Layers Maximum Working - Drum Barrel Groove Root Diameter 25.25"
Single Line Speed in m (ft) per Minute

Layer	1	2	3	4	5	6	7	8
Single Line Pull Radius	335 mm (13.2")	363 mm (14.3")	391 mm (15.4")	419 mm (16.5")	447 mm (17.6")	460 mm (18.1")	503 mm (19.8")	531 mm (20.9")
Single Line Pull kg (lb)								
0 (0)	85 (279)	92 (302)	99 (325)	104 (340)	113 (372)	120 (395)	128 (419)	135 (442)
2 268 (5,000)	81 (267)	88 (288)	94 (310)	101 (330)	107 (351)	113 (372)	119 (392)	126 (413)
4 536 (10,000)	78 (255)	84 (275)	90 (294)	95 (312)	101 (331)	106 (348)	112 (366)	117 (383)
6 804 (15,000)	74 (244)	80 (261)	85 (278)	89 (291)	90 (296)	91 (300)	93 (305)	94 (309)
9 072 (20,000)	68 (222)	69 (226)	70 (231)	72 (235)	73 (240)	74 (244)	76 (249)	77 (253)
11 340 (25,000)	57 (188)	59 (193)	60 (197)	62 (202)	63 (206)	64 (211)	66 (215)	69 (228)
13 607 (30,000)	51 (168)	52 (170)	53 (175)	55 (179)	56 (184)	57 (188)	59 (193)	60 (197)

boom combinations

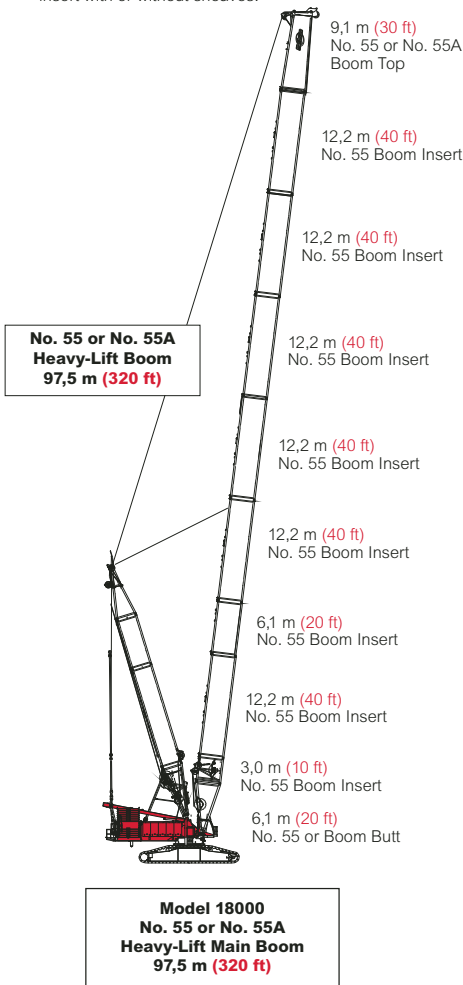
No. 55 or No. 55A Boom Combinations

Boom Length m (ft)	Boom Inserts		
	3,0 m (10 ft)	6,1 m (20 ft)	12,2 m (40 ft)
36,6 (120)	1	1	1
42,7 (140)	1	-	2
48,8 (160)	1	1	2
54,9 (180)	1	2	2
61,0 (200)	1	1	3
67,1 (220)	1	2	3
73,2 (240)	1	1	4
79,2 (260)	1	2	4
85,3 (280)	1	1	5
91,4 (300)	1	2	5
97,5 (320)	1	1	6

NOTE: 36,6 m (120') basic boom consists of 6,1 m (20') butt, 3,0 m (10') insert with drum, 6,1 m (20') insert, 12,2 m (40'), and 9,1 m (30') top.

NOTE: the first 12,2 m (40') insert is always a No. 55-79A transition with equal plat. The second 12,2 m (40') No. 55 insert can be with or without a 12,2 m (40') luffing drum storage.

* May use 12,2 m (40') No. 55 or No. 55A insert with or without sheaves.



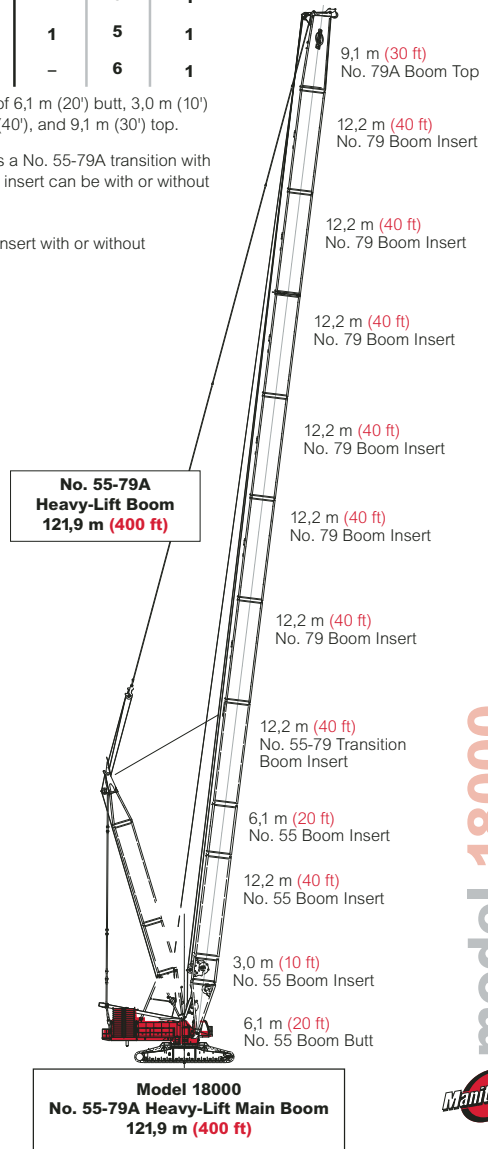
No. 55-79A Boom Combinations

Boom Length m (ft)	Boom Inserts					
	55*			79		No. 55-79A Transition
	3,0 m (10 ft)	6,1 m (20 ft)	12,2 m (40 ft)	6,1 m (20 ft)	12,2 m (40 ft)	12,2 m (40 ft)
36,6 (120)	1	1	-	-	-	1
42,7 (140)	1	-	1	-	-	1
48,8 (160)	1	1	1	-	-	1
54,9 (180)	1	1	1	1	-	1
61,0 (200)	1	1	1	-	1	1
67,1 (220)	1	1	1	1	1	1
73,2 (240)	1	1	1	-	2	1
79,2 (260)	1	1	1	1	2	1
85,3 (280)	1	1	1	-	3	1
91,4 (300)	1	1	1	1	3	1
97,5 (320)	1	1	1	-	4	1
103,6 (340)	1	1	1	1	4	1
109,7 (360)	1	1	1	-	5	1
115,8 (380)	1	1	1	1	5	1
121,9 (400)	1	1	1	-	6	1

NOTE: 36,6 m (120') basic boom consists of 6,1 m (20') butt, 3,0 m (10') insert with drum, 6,1 m (20') insert, 12,2 m (40'), and 9,1 m (30') top.

NOTE: the first 12,2 m (40') insert is always a No. 55-79A transition with equal plat. The second 12,2 m (40') No. 55 insert can be with or without a 12,2 m (40') luffing drum storage.

* May use 12,2 m (40') No. 55 or No. 55A insert with or without sheaves.

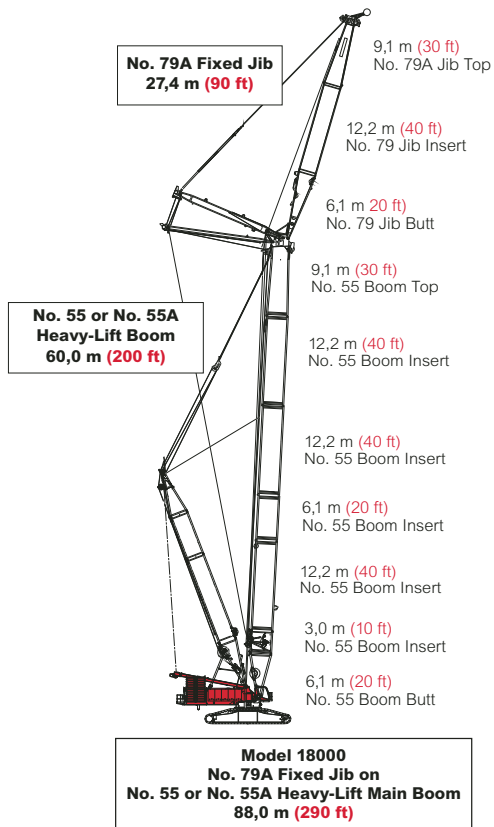


boom combinations

24

No. 79A Fixed Jib Combinations

Jib Length m (ft)	Boom Inserts	
	6,1 m (20 ft)	12,2 m (40 ft)
27,4 (90)	-	-
33,5 (110)	1	-
39,6 (130)	-	1
45,7 (150)	1	1



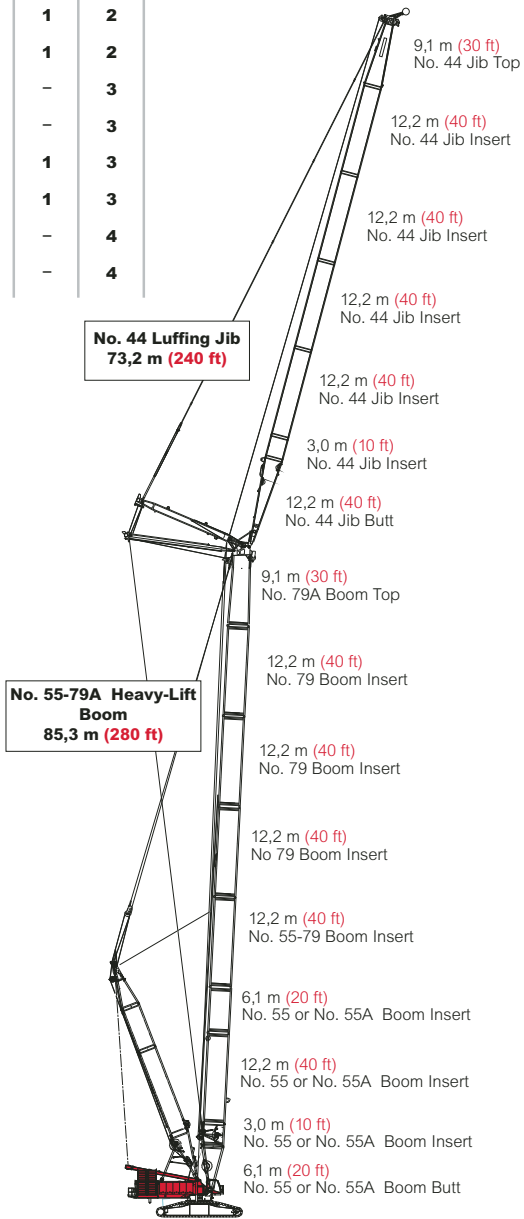
boom combinations

No. 44 Luffing Jib Combinations

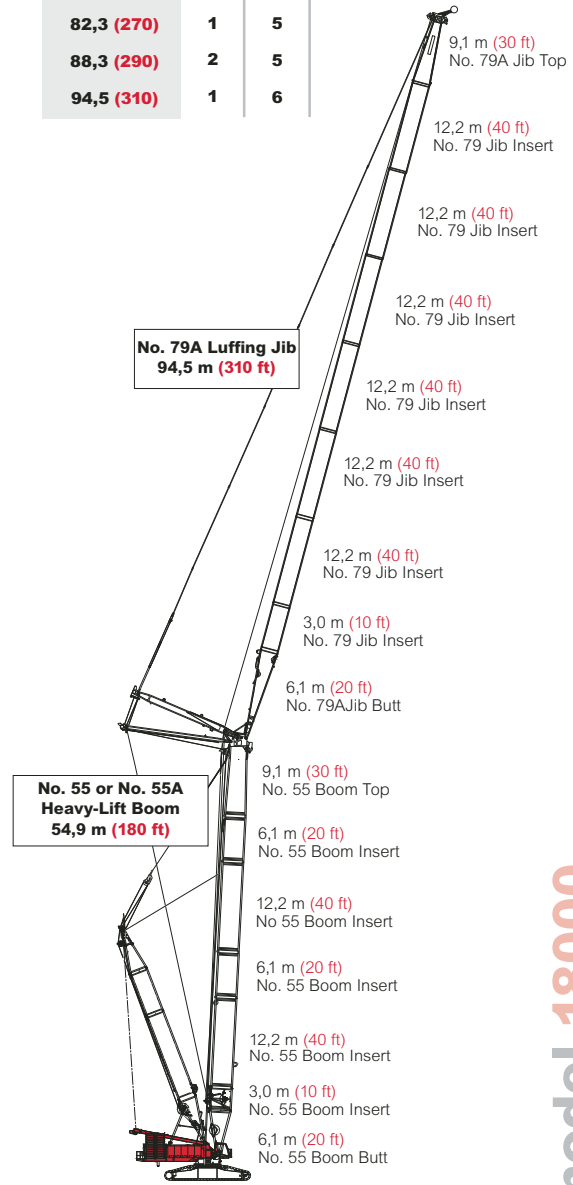
Luffing Jib Length m (ft)	Boom Inserts		
	3,0 m (10 ft)	6,1 m (20 ft)	12,2 m (40 ft)
21,3 (70)	-	-	-
24,4 (80)	1	-	-
27,4 (90)	-	1	-
30,5 (100)	1	1	-
33,5 (110)	-	-	1
36,6 (120)	1	-	1
39,6 (130)	-	1	1
42,7 (140)	1	1	1
45,7 (150)	-	-	2
48,8 (160)	1	-	2
51,8 (170)	-	1	2
54,9 (180)	1	1	2
57,9 (190)	-	-	3
61,0 (200)	1	-	3
64,0 (210)	-	1	3
67,1 (220)	1	1	3
70,1 (230)	-	-	4
73,2 (240)	1	-	4

No. 79A Luffing Jib Combinations

Luffing Jib Length m (ft)	Boom Inserts	
	6,1 m (20 ft)	12,2 m (40 ft)
27,4 (90)	2	-
33,5 (110)	1	1
39,6 (130)	2	1
45,7 (150)	1	2
51,8 (170)	2	2
57,9 (190)	1	3
64,0 (210)	2	3
70,1 (230)	1	4
76,2 (250)	2	4
82,3 (270)	1	5
88,3 (290)	2	5
94,5 (310)	1	6



Model 18000
No. 44 Luffing Jib on
No. 55-79A Heavy-Lift Main Boom
158,5 m (520 ft)

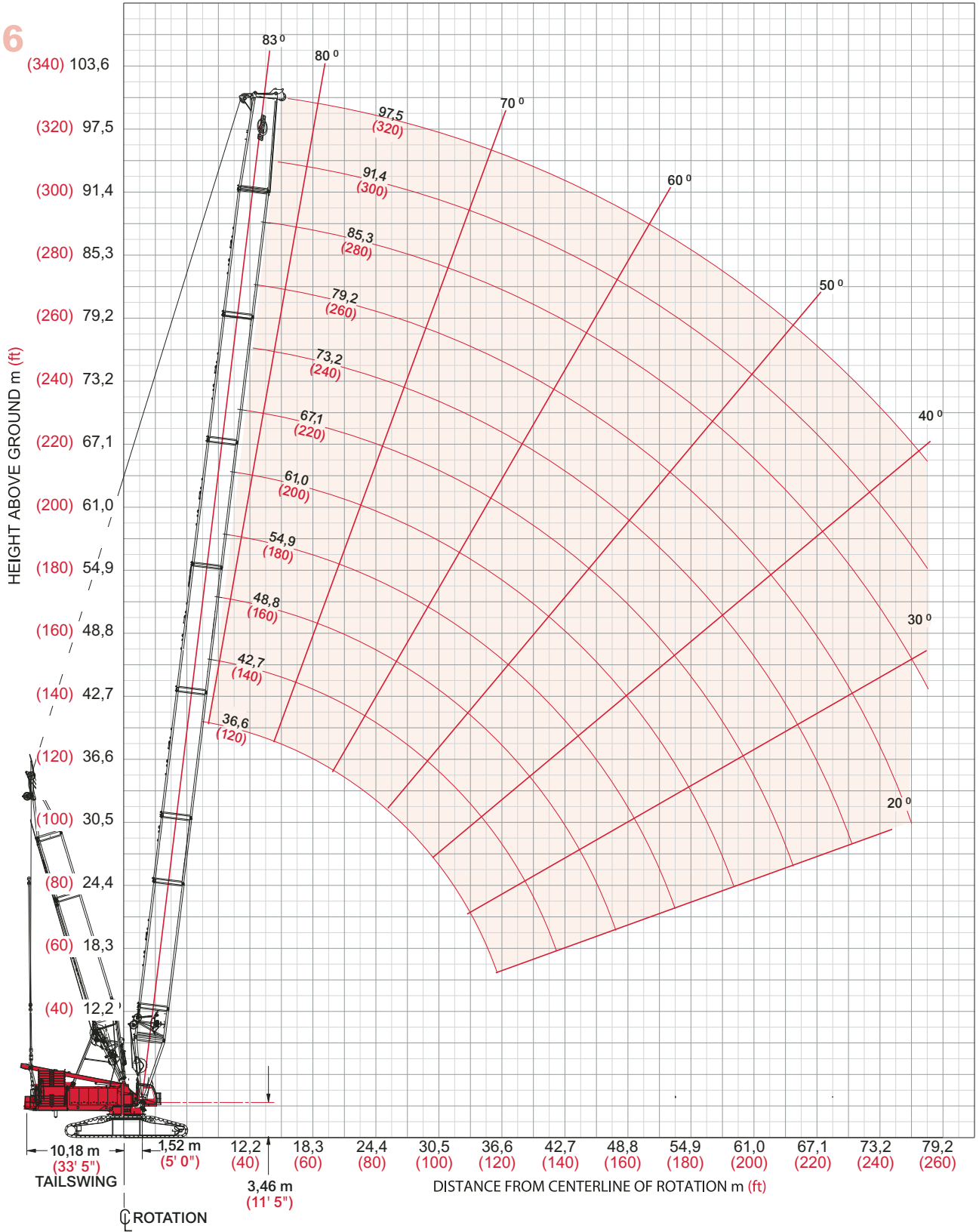


Model 18000
No. 79A Luffing Jib on No. 55
or No. 55A Heavy-Lift Main Boom
149,3 m (490 ft)

heavy-lift boom range diagram

No. 55 or No. 55A Main Boom

26



heavy-lift load charts

Liftcrane Boom Capacities
Boom No. 55 or No. 55A with 30,5 m (100') Mast No. 56

239 500 kg (528,000 lb) Counterweight 145 150 kg (320,000 lb) Carbody Counterweight

360° Rating kg (lb) x 1 000

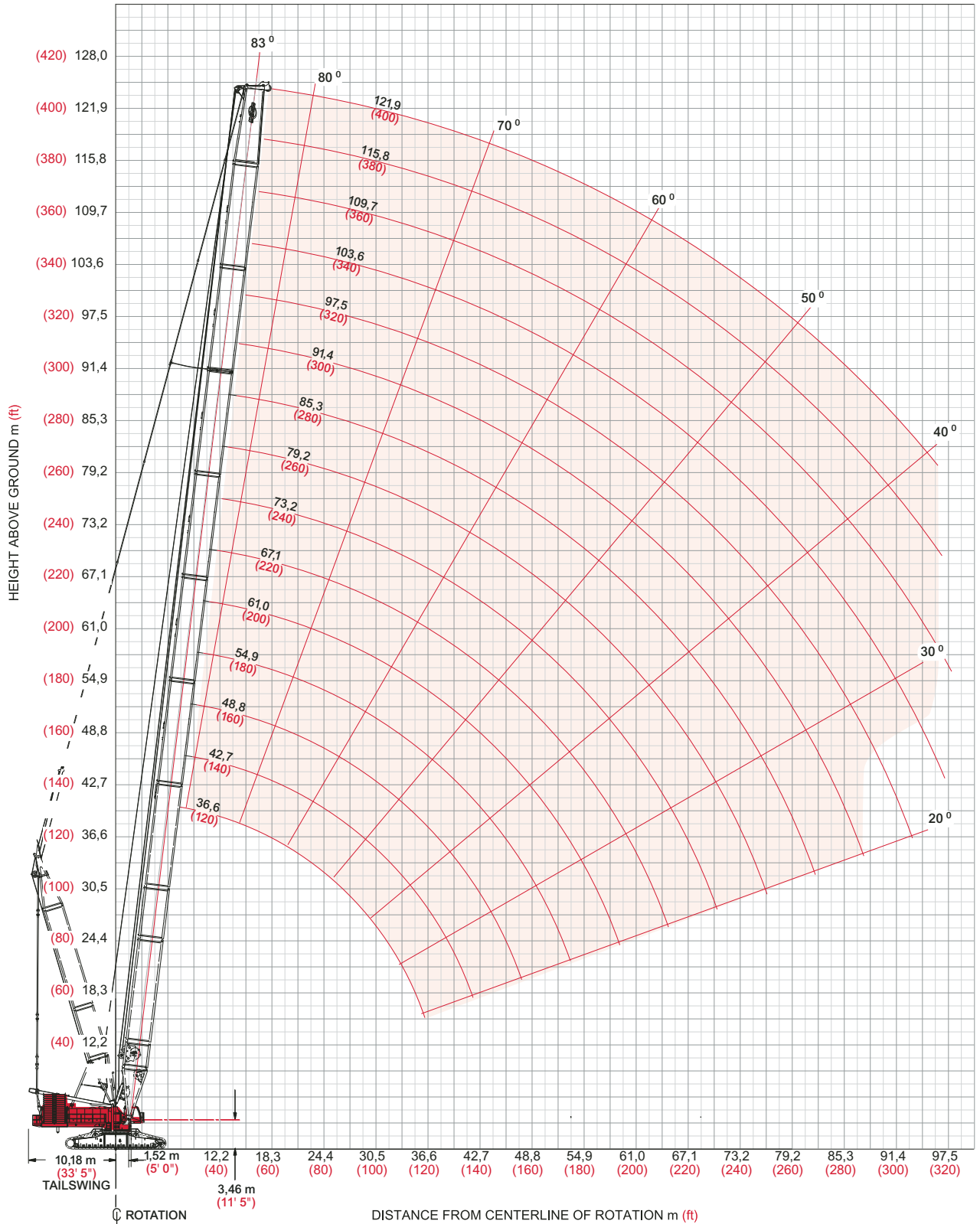
Boom m (ft)	36,6 (120)	42,7 (140)	48,8 (160)	54,9 (180)	61,0 (200)	67,1 (220)	73,2 (240)	79,2 (260)	85,4 (280)	91,4 (300)	97,5 (320)
Radius											
7,3 (24)	600,0 (1322.8)										
8,0 (26)	512,8 (1145.7)										
9,0 (30)	458,8 (995.9)	457,5 (992.2)	- (987.9)								
11,0 (36)	375,5 (830.1)	373,9 (826.6)	372,1 (822.5)	370,5 (818.9)	370,4 (816.7)						
12,0 (40)	343,8 (745.8)	342,3 (742.5)	340,4 (738.4)	338,8 (734.8)	337,7 (732.6)	336,1 (728.6)	- (725.9)				
14,0 (45)	291,5 (657.7)	290,3 (654.9)	288,7 (651.5)	287,3 (648.4)	286,5 (646.6)	285,0 (643.1)	283,9 (640.8)	282,5 (636.7)	281,1 (633.7)		
16,0 (50)	250,0 (583.2)	248,8 (580.4)	247,2 (577.0)	245,8 (573.8)	244,9 (572.0)	243,3 (568.5)	242,3 (566.2)	240,6 (562.4)	239,4 (559.8)	238,4 (556.0)	236,3 (546.6)
18,0 (60)	218,3 (472.6)	217,0 (469.9)	215,5 (466.5)	214,0 (463.3)	214,9 (461.5)	211,6 (457.9)	210,5 (455.5)	208,8 (451.7)	207,6 (449.0)	205,8 (445.1)	206,1 (445.1)
22,0 (70)	172,4 (394.4)	171,3 (391.9)	169,8 (388.5)	168,3 (385.3)	167,5 (383.4)	165,8 (379.8)	164,7 (377.4)	163,0 (373.5)	161,7 (368.7)	159,9 (366.8)	160,0 (366.9)
24,0 (80)	155,4 (336.3)	154,3 (333.8)	152,8 (330.5)	151,3 (327.2)	150,4 (325.9)	148,8 (321.7)	147,7 (319.2)	145,9 (315.4)	144,7 (312.6)	142,9 (308.6)	142,9 (308.7)
28,0 (90)	126,0 (286.3)	125,3 (284.7)	124,2 (282.4)	123,2 (279.9)	122,7 (278.9)	121,5 (276.1)	120,7 (274.3)	119,1 (270.4)	117,9 (267.6)	116,2 (263.7)	116,2 (263.7)
30,0 (100)	114,0 (245.7)	113,3 (244.2)	112,2 (241.8)	111,1 (239.2)	110,6 (238.1)	109,3 (235.2)	108,4 (233.4)	107,1 (223.3)	106,1 (228.1)	104,7 (224.8)	104,9 (225.3)
34,0 (110)	94,8 (213.5)	94,1 (212.0)	93,1 (209.7)	91,8 (207.0)	91,3 (205.8)	89,9 (202.8)	89,1 (200.9)	87,6 (197.7)	86,6 (195.5)	85,1 (192.1)	85,3 (192.6)
36,0 (120)	86,9 (187.1)	86,3 (185.9)	85,3 (183.6)	84,1 (180.9)	83,5 (179.6)	82,1 (176.5)	81,2 (174.6)	79,7 (171.3)	78,7 (169.0)	77,2 (165.6)	77,4 (166.1)
40,0 (130)		73,3 (164.2)	72,3 (161.9)	71,1 (159.2)	70,5 (157.9)	69,1 (154.8)	68,2 (152.8)	66,7 (149.5)	65,6 (147.1)	64,0 (143.7)	64,2 (144.1)
42,0 (140)		67,8 (145.7)	66,8 (143.6)	65,6 (140.9)	65,0 (139.6)	63,5 (132.2)	62,7 (134.5)	61,1 (131.1)	60,1 (128.7)	58,5 (125.2)	58,7 (125.6)
50,0 (160)			- (114.2)	48,3 (111.7)	47,8 (110.4)	46,3 (107.2)	45,4 (105.3)	43,9 (101.8)	42,8 (99.4)	41,1 (95.8)	41,3 (96.2)
54,0 (180)				41,7 (89.1)	41,2 (88.1)	39,8 (84.9)	38,9 (83.0)	37,3 (79.5)	36,2 (77.1)	36,6 (73.5)	34,7 (73.8)
60,0 (200)						31,6 (67.3)	30,7 (65.4)	29,2 (61.9)	28,1 (59.5)	26,4 (55.9)	26,6 (56.2)
66,0 (220)							21,3 (50.4)	22,3 (46.5)	21,1 (43.8)	19,0 (39.2)	19,3 (40.1)
72,0 (240)								15,6 (31.8)	14,4 (29.4)	12,4 (24.9)	12,8 (25.8)
76,0 (250)								11,6 (25.2)	10,6 (23.0)	8,6 (18.6)	- (19.5)
78,0 (255)								- (21.9)	8,7 (19.9)	- (15.6)	- (16.6)

Meets ANSI B30.5 Requirements - Capacities do not exceed 75% of static tipping load.
 NOTICE: This capacity chart is for reference only and must not be used for lifting purposes.

heavy-lift boom range diagram

No. 55-79A Main Boom

28



heavy-lift load charts

Liftcrane Boom Capacities - 18000
Boom No. 55-79A with 30,5 m (100') Mast No. 56

239 500 kg (528,000 lb) Counterweight 145 150 kg (320,000 lb) Carbody Counterweight

360° Rating kg (lb) x 1 000

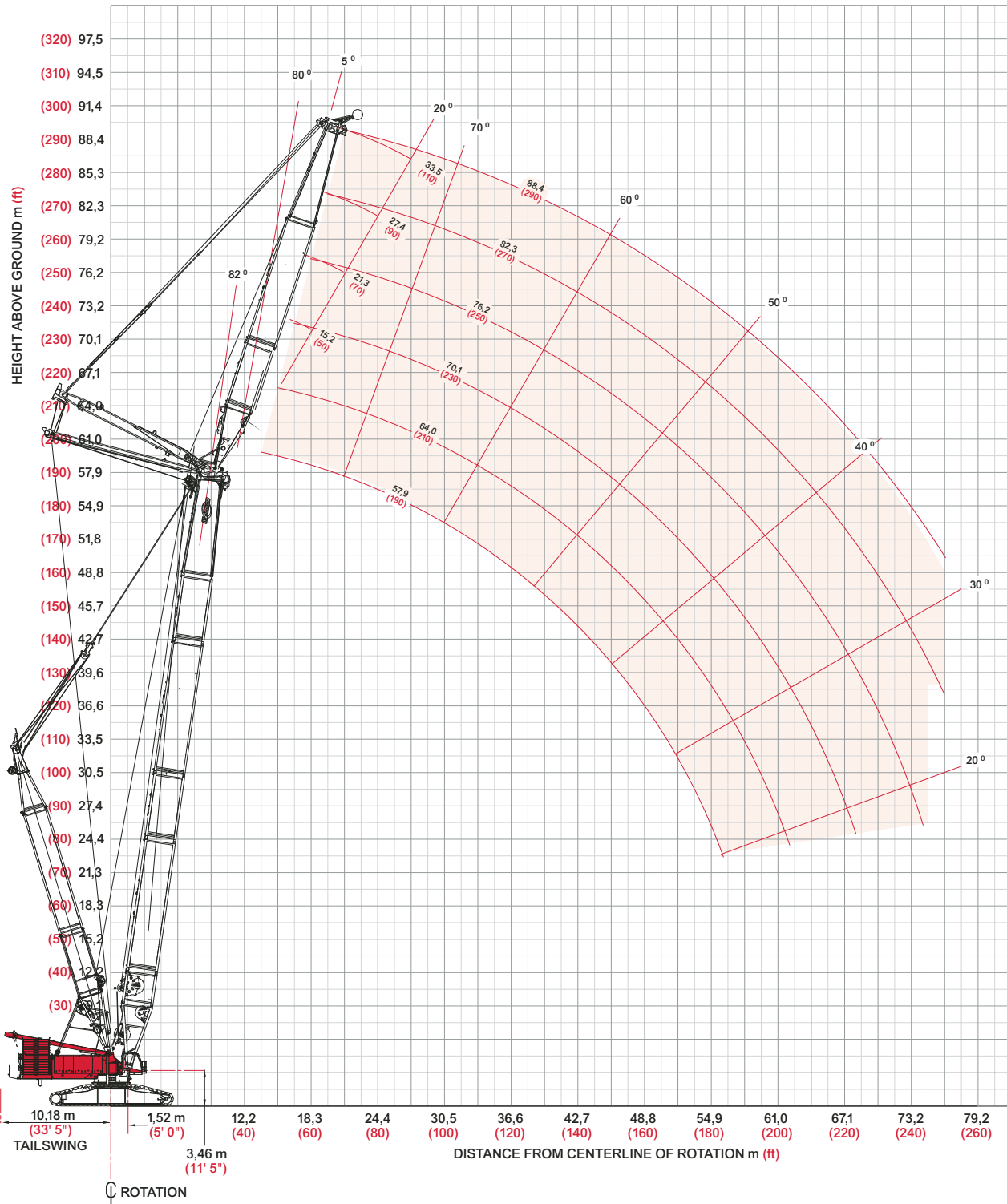
Boom m (ft)	36,6 (120)	42,7 (140)	48,8 (160)	61,0 (200)	67,1 (220)	73,2 (240)	85,3 (280)	91,4 (300)	97,5 (320)	109,7 (360)	115,8 (380)	121,9 (400)
Radius												
7,9 (26)	453,5 (1000.0)											
9,1 (30)	453,5 (1000.0)	453,5 (1000.0)	426,0 (939.3)									
10,0 (34)	419,2 (891.6)	417,7 (888.6)	416,0 (884.8)									
12,0 (40)	349,5 (758.5)	348,2 (755.7)	346,6 (752.0)	340,7 (750.0)	309,8 (683.2)	- (633.7)						
14,0 (45)	297,2 (670.2)	296,2 (667.9)	294,8 (664.8)	294,2 (663.5)	287,1 (647.5)	268,0 (599.8)	220,7 (488.0)					
16,0 (50)	255,8 (595.8)	254,8 (593.6)	253,4 (590.5)	252,8 (589.2)	251,4 (582.7)	235,8 (543.9)	210,9 (481.2)	192,0 (430.5)	177,4 (397.5)			
18,0 (60)	224,1 (485.5)	223,1 (483.4)	221,8 (480.4)	221,2 (479.1)	220,6 (477.4)	211,8 (460.5)	186,8 (406.1)	177,3 (383.4)	167,3 (364.3)	135,3 (298.3)	- (257.4)	- (220.9)
20,0 (70)	199,0 (407.6)	198,0 (405.6)	196,6 (402.6)	196,1 (401.3)	195,3 (399.6)	192,6 (398.8)	169,7 (352.8)	159,9 (332.2)	151,7 (314.8)	133,7 (282.8)	116,0 (254.6)	99,8 (220.2)
24,0 (80)	161,5 (349.7)	160,6 (347.7)	159,3 (344.8)	158,7 (343.5)	157,9 (341.7)	157,5 (340.9)	143,8 (312.6)	135,2 (293.8)	127,8 (277.8)	114,7 (249.0)	109,5 (236.2)	99,5 (219.3)
26,0 (90)	146,0 (299.2)	145,6 (298.1)	144,7 (296.2)	144,4 (296.1)	143,6 (295.0)	143,2 (294.7)	133,7 (280.9)	125,6 (263.7)	118,7 (248.9)	106,0 (221.8)	100,3 (209.6)	95,6 (199.1)
30,0 (100)	120,0 (258.9)	119,5 (257.8)	118,6 (255.8)	118,5 (255.7)	118,0 (254.5)	117,8 (254.1)	116,5 (251.8)	110,0 (239.2)	103,8 (225.5)	92,1 (199.9)	86,8 (188.3)	82,1 (178.2)
36,0 (120)	91,1 (192.1)	92,7 (199.9)	91,7 (197.9)	91,6 (197.6)	91,1 (196.4)	90,9 (195.9)	89,8 (193.5)	89,0 (190.7)	87,2 (189.4)	76,7 (166.5)	71,9 (155.9)	67,6 (146.7)
42,0 (140)		74,2 (160.0)	73,4 (158.2)	73,3 (157.9)	72,7 (156.7)	72,5 (156.2)	71,4 (153.7)	75,5 (151.8)	70,0 (150.7)	65,4 (141.9)	60,9 (132.1)	57,0 (123.6)
48,0 (160)			59,9 (129.0)	59,9 (129.0)	59,3 (127.8)	59,2 (127.3)	58,0 (124.8)	57,2 (122.9)	56,6 (122.7)	54,9 (118.0)	52,4 (113.6)	48,9 (105.8)
54,0 (180)				49,7 (106.9)	49,2 (105.7)	49,0 (105.3)	47,8 (102.8)	47,0 (100.9)	46,4 (99.7)	44,7 (95.9)	43,8 (93.8)	42,2 (91.3)
60,0 (200)					41,1 (88.3)	41,0 (88.0)	39,8 (85.5)	39,0 (83.6)	38,4 (82.4)	36,7 (78.6)	35,8 (76.5)	35,1 (74.9)
66,0 (220)						34,5 (73.8)	33,4 (71.4)	32,5 (69.6)	32,0 (68.4)	30,3 (64.6)	29,3 (62.5)	28,6 (60.9)
72,0 (240)							28,0 (59.8)	27,2 (58.0)	26,6 (56.8)	24,9 (53.1)	24,0 (50.9)	23,2 (49.3)
78,0 (260)							23,5 (50.0)	22,7 (48.2)	22,2 (47.1)	20,4 (43.3)	19,5 (41.2)	18,8 (39.6)
84,0 (280)								18,8 (39.8)	18,3 (38.7)	16,6 (35.0)	15,7 (332.9)	14,9 (31.1)
88,0 (300)								16,4	16,0 (30.6)	14,3 (26.6)	13,1 (24.1)	12,2 (22.2)
92,0 (310)									13,5 (26.3)	11,7 (22.6)	10,5 (20.0)	9,7 (-)
96,0 (320)									10,9 (-)	9,3 (18.7)	8,2 (16.2)	7,4 (-)

Meets ANSI B30.5 Requirements - Capacities do not exceed 75% of static tipping load.
 NOTICE: This capacity chart is for reference only and must not be used for lifting purposes.

fixed jib range diagram

No. 79A fixed Jib No. 79A with 15,2 m (50 ft) Strut on Boom No. 55 or 55A with 30,5 m (100 ft) mast No. 56

30



fixed jib load charts

Liftcrane Jib Capacities - 18000 Series

Jib No. 79A with 15,2 m (50 ft) Strut on Boom No. 55 or 55A with 30,5 m (100 ft) mast No. 56

239,500 kg (528,000 lb) Crane Counterweight 145,150 kg (320,000 lb) Carbody Counterweight

360° Rating kg (lb) x 1 000

Boom m (ft)	5° Offset					20° Offset				
	42,7 (140)	48,8 (160)	54,9 (180)	61,0 (200)	67,1 (220)	42,7 (140)	48,9 (160)	54,9 (180)	61,0 (200)	67,1 (220)
Radius										
13,7 (45)	295,0 (650.4)									
16,8 (55)	246,0 (512.6)	245,6 (510.1)	244,7 (508.0)	- (504.5)	227,7 (72.4)					
22,0 (70)	165,7 (380.1)	164,3 (377.1)	163,0 (374.3)	167,2 (370.9)	160,1 (82.3)	170,4 (390.7)	169,3 (388.5)	- (386.7)	167,2 (384.0)	166,5 (381.8)
26,0 (90)	133,3 (273.5)	131,8 (270.0)	130,3 (266.8)	133,5 (263.4)	127,2 (77.8)	137,0 (281.0)	135,8 (278.3)	134,7 (275.8)	133,5 (273.0)	132,2 (270.2)
36,0 (120)	79,8 (171.3)	78,5 (168.3)	77,1 (165.3)	79,3 (162.5)	74,5 (56.2)	82,3 (176.6)	81,2 (174.2)	80,2 (171.9)	79,3 (169.8)	78,1 (167.3)
42,0 (140)	60,4 (129.2)	58,9 (126.0)	57,5 (122.8)	56,2 (120.0)	54,7 (40.2)	62,1 (132.9)	61,0 (130.3)	59,8 (127.7)	58,8 (125.6)	57,5 (122.8)
48,0 (160)	46,1 (98.3)	44,6 (95.1)	43,1 (91.7)	41,9 (89.0)	40,3 (29.6)	47,2 (100.6)	46,1 (98.1)	44,8 (95.3)	43,9 (93.2)	42,5 (90.2)
54,0 (180)	34,6 (72.7)	33,4 (70.0)	31,7 (66.3)	30,4 (63.5)	28,3 (20.3)		34,5 (72.4)	33,2 (69.6)	32,3 (67.7)	30,4 (63.5)
60,0 (200)		22,8 (47.1)	21,3 (43.9)	20,2 (41.4)	18,2 (12.8)			22,3 (45.7)	21,6 (44.2)	19,8 (40.5)
68,0 (220)			- (24.6)	9,1 (22.8)	- (8.8)					8,2 (20.9)
72,0 (240)										

Boom m (ft)	5° Offset				20° Offset			
	15,2 (40)	48,0 (160)	54,0 (180)	61,0 (200)	15,2 (40)	48,0 (160)	54,0 (180)	61,0 (200)
Radius								
13,7 (45)								
16,0 (55)	249,4 (518.4)	- (516.6)						
22,0 (70)	167,8 (384.8)	166,6 (382.3)	165,6 (380.1)	163,9 (376.4)	173,4 (397.5)	173,0 (396.1)		
26,0 (90)	135,1 (277.4)	133,8 (274.3)	132,5 (271.4)	130,8 (267.7)	139,6 (286.6)	138,7 (284.4)	137,9 (282.4)	136,5 (279.5)
36,0 (120)	81,8 (175.6)	80,5 (172.8)	79,3 (170.1)	77,9 (167.0)	85,0 (182.4)	84,1 (180.4)	83,2 (178.4)	82,1 (176.0)
42,0 (140)	62,1 (133.1)	60,8 (130.0)	59,4 (126.9)	58,0 (123.8)	64,5 (138.2)	63,4 (135.7)	62,3 (133.3)	61,3 (130.9)
48,0 (160)	47,8 (102.0)	46,3 (98.7)	44,8 (95.4)	43,4 (92.4)	49,5 (105.6)	48,3 (103.0)	47,2 (100.4)	46,0 (97.9)
54,0 (180)	36,7 (78.1)	35,2 (74.7)	33,6 (70.8)	32,2 (67.5)	37,9 (80.4)	35,2 (77.8)	35,4 (75.0)	34,4 (72.7)
60,0 (200)		25,1 (52.2)	23,3 (48.3)	21,9 (45.1)		25,1 (54.7)	25,0 (51.8)	24,0 (49.5)
68,0 (220)		- (32.8)	12,1 (29.4)	10,8 (26.6)				12,2 (29.7)
72,0 (240)								

Meets ANSI B30.5 Requirements - Capacities do not exceed 75% of static tipping load.
 NOTICE: This capacity chart is for reference only and must not be used for lifting purposes.

fixed jib load charts

32

Liftcrane Jib Capacities - 18000 Series
Jib No. 79A with 15,2 m (50 ft) Strut on Boom No. 55 or 55A
with 30,5 m (100 ft) mast No. 56

113 040 kg (249,200 lb) Crane Counterweight 54 430 kg (120,000 lb) Carbody Counterweight

360° Rating kg (lb) x 1 000

	5° Offset				20° Offset			
	42,7 m (ft)	48,8 m (ft)	54,9 m (ft)	61,0 m (ft)	42,7 m (ft)	48,9 m (ft)	54,9 m (ft)	61,0 m (ft)
Radius								
13,7 (45)								
16,0 (55)	- (520.8)							
22,0 (70)	168,7 (386.8)	167,7 (384.7)	166,8 (382.9)	165,0 (370.9)				
26,0 (90)	135,9 (279.0)	134,7 (276.2)	133,6 (273.6)	131,8 (269.7)	141,2 (289.9)	141,2 (288.2)	139,9 (286.6)	138,5 (283.6)
36,0 (120)	82,9 (178.0)	81,7 (175.3)	80,6 (172.8)	79,0 (169.4)	86,8 (186.3)	86,8 (184.5)	85,3 (182.9)	84,1 (180.3)
42,0 (140)	63,1 (135.3)	61,8 (132.2)	60,4 (129.3)	58,9 (125.9)	66,1 (141.7)	66,1 (139.4)	64,2 (137.3)	63,0 (134.6)
48,0 (160)	48,7 (104.1)	47,2 (100.8)	45,8 (97.6)	44,3 (94.2)	51,1 (109.0)	51,1 (106.4)	48,8 (103.9)	47,5 (101.2)
54,0 (180)	37,7 (80.2)	36,2 (76.8)	34,6 (73.4)	33,0 (69.3)	37,7 (83.9)	39,4 (81.1)	37,0 (78.4)	35,8 (75.7)
60,0 (200)	28,1 (58.9)	26,4 (55.1)	24,6 (51.0)	22,8 (47.3)	28,1 (62.3)	28,5 (59.5)	27,0 (56.2)	25,7 (53.3)
68,0 (220)	16,7 (39.8)	15,3 (36.5)	13,5 (32.4)	11,8 (28.8)	16,7 (-)	16,5 (39.3)	15,0 (36.1)	13,9 (33.5)
72,0 (240)		10,4 (20.0)	8,7 (16.4)				9,9 (18.8)	8,8 (16.6)

	5° Offset			20° Offset		
	42,7 m (ft)	48,8 m (ft)	54,9 m (ft)	42,7 m (ft)	48,8 m (ft)	54,9 m (ft)
Radius						
13,7 (45)						
16,0 (55)						
22,0 (70)	169,2 (387.8)	168,3 (386.1)	167,9 (384.6)			
26,0 (90)	136,4 (280.2)	135,3 (277.6)	134,3 (275.3)	142,3 (292.5)	141,9 (291.2)	- (290.1)
36,0 (120)	83,8 (180.0)	82,7 (177.5)	81,7 (175.2)	88,3 (189.6)	87,6 (188.1)	87,1 (186.9)
42,0 (140)	64,1 (137.4)	62,7 (134.4)	61,5 (131.6)	67,6 (145.0)	66,7 (142.9)	65,9 (141.0)
48,0 (160)	49,7 (106.3)	48,2 (103.0)	46,9 (99.9)	52,6 (112.3)	51,5 (109.9)	50,4 (107.5)
54,0 (180)	38,7 (82.5)	37,2 (79.1)	35,7 (75.7)	41,0 (87.3)	39,8 (84.5)	38,6 (81.9)
60,0 (200)	29,7 (62.4)	27,9 (58.4)	26,0 (54.2)	31,8 (67.3)	30,5 (64.2)	29,1 (60.9)
68,0 (220)	18,8 (44.1)	17,0 (40.1)	15,0 (35.7)	20,3 (47.6)	17,0 (44.6)	17,3 (41.1)
76,0 (250)		8,0 (17.4)			8,0 (-)	7,7 (16.5)

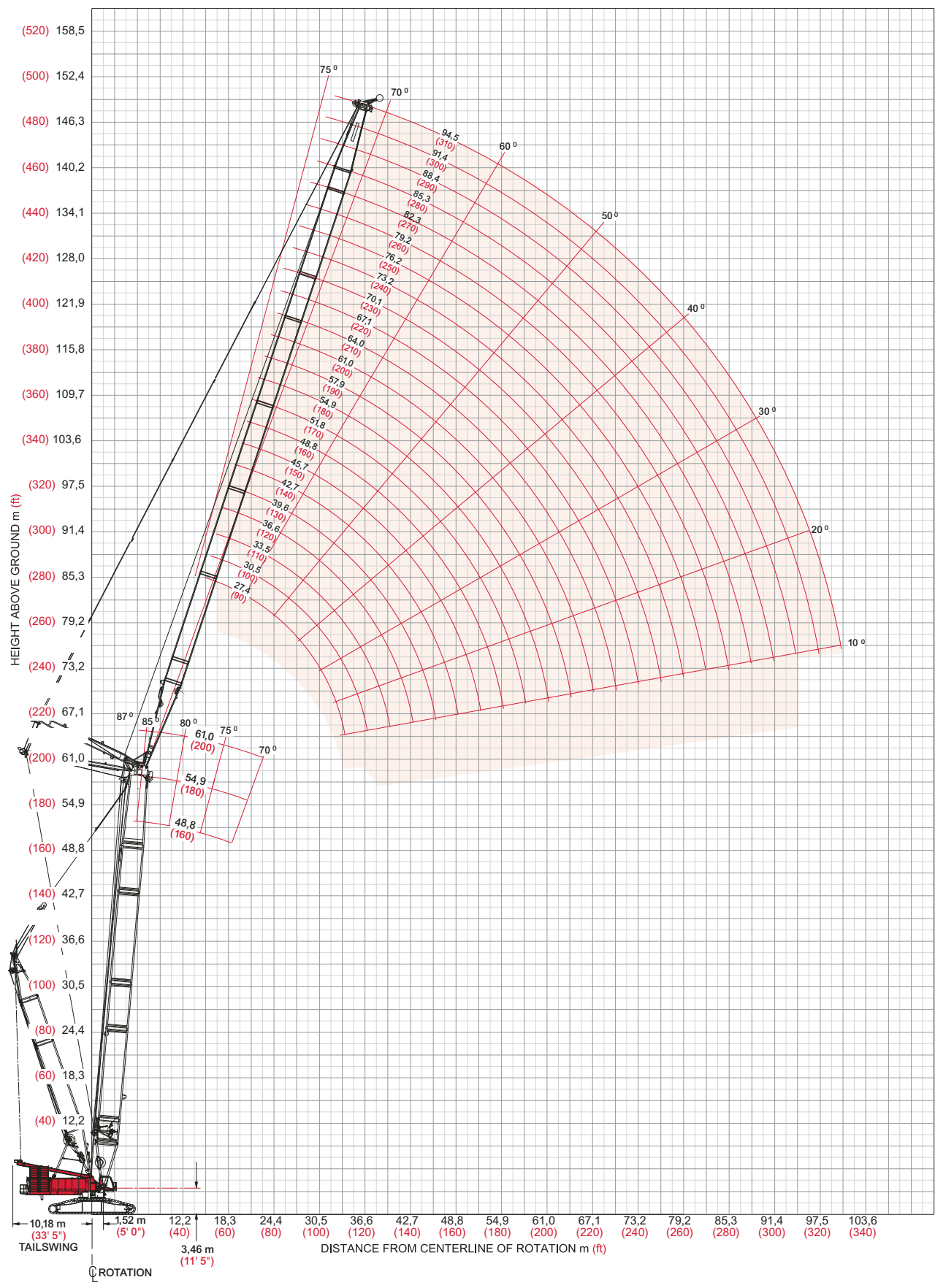
model 18000



Meets ANSI B30.5 Requirements - Capacities do not exceed 75% of static tipping load.
 NOTICE: This capacity chart is for reference only and must not be used for lifting purposes.

luffing jib range diagram

No. 79A Luffing Jib on No. 55 or No. 55A Main Boom



luffing jib load charts

Liftcrane Luffing Jib Capacities - 18000

Luffing Jib No. 79A on Boom No. 55 or No. 55A With 30,5 m (100') Mast No. 56

239 500 kg (528,000 lb) Counterweight 145 150 kg (320,000 lb) Carbody Counterweight

34

360° Rating

87° Boom Angle

Radius	Boom	61,0
	m (ft)	(200)
16,0 (55)	256,8 (537.4)	
18,0 (60)	200,3 (488.0)	
20,0 (70)	180,1 (411.0)	
24,0 (80)	163,2 (353.5)	
26,0 (90)	136,7 (308.8)	
30,0 (100)	126,0 (272.8)	
36,0 (120)		
42,0 (140)		
48,0 (160)		
54,0 (180)		
60,0 (200)		

Luffing Jib Length 26,0 m (90 ft)

Radius	Boom	61,0
	m (ft)	(200)
16,0 (55)	239,3 (527.0)	
18,0 (60)	224,3 (486.9)	
20,0 (70)	199,9 (410.1)	
24,0 (80)	162,9 (352.9)	
26,0 (90)	148,8 (308.6)	
30,0 (100)	126,1 (273.1)	
36,0 (120)	101,5 (219.5)	
42,0 (140)		
48,0 (160)		
54,0 (180)		
60,0 (200)		

Luffing Jib Length 33,5 m (110 ft)

Radius	Boom	61,0
	m (ft)	(200)
16,0 (55)		
18,0 (60)		
20,0 (70)	239,3 (380.4)	
24,0 (80)	224,3 (348.8)	
26,0 (90)	199,9 (304.7)	
30,0 (100)	162,9 (269.6)	
36,0 (120)	148,8 (217.0)	
42,0 (140)	126,1 (178.4)	
48,0 (160)	101,5 (140.7)	
54,0 (180)		
60,0 (200)		

Luffing Jib Length 45,5 m (150 ft)

Radius	Boom	61,0
	m (ft)	(200)
16,0 (55)		
18,0 (60)		
20,0 (70)		
24,0 (80)	131,8 (239.2)	
26,0 (90)	127,9 (275.3)	
30,0 (100)	119,1 (260.2)	
36,0 (120)	98,3 (212.6)	
42,0 (140)	81,0 (175.0)	
48,0 (160)	67,1 (144.7)	
54,0 (180)	56,4 (121.5)	
60,0 (200)	47,8 (122.8)	

Luffing Jib Length 57,9 m (190 ft)

model 18000



Meets ANSI B30.5 Requirements - Capacities do not exceed 75% of static tipping load.
 NOTICE: This capacity chart is for reference only and must not be used for lifting purposes.

Luffing jib load charts

Liftcrane Luffing Jib Capacities - 18000

Luffing Jib No. 79A on Boom No. 55 or No. 55A With 30,5 m (100') Mast No. 56

239 500 kg (529,007 lb) Counterweight 145 150 kg (320,000 lb) Carbody Counterweight

360° Rating

85° Boom Angle

Boom m (ft)	48,0 (160)	54,9 (180)	61,0 (200)
Radius			
16,0 (55)	240,7 (530.7)		
18,0 (60)	222,8 (482.0)	216,8 (478.0)	- (474.1)
20,0 (70)	197,9 (406.0)	196,2 (402.6)	194,6 (399.3)
24,0 (80)	161,2 (349.2)	159,9 (346.3)	158,6 (343.5)
26,0 (90)	147,2 (305.1)	145,9 (302.6)	144,7 (300.1)
30,0 (100)	124,6 (269.6)	123,5 (267.4)	122,6 (265.3)
34,0 (115)			105,3 (223.2)
42,0 (140)			
44,0 (150)			
46,0 (155)			

Boom m (ft)	48,0 (160)	54,9 (180)	61,0 (200)
Radius			
16,0 (55)			
18,0 (60)			
20,0 (70)	182,3 (402.2)	180,7 (398.4)	- (394.9)
24,0 (80)	159,6 (345.7)	158,2 (342.6)	156,7 (339.5)
26,0 (90)	145,7 (302.2)	144,4 (299.4)	143,1 (296.7)
30,0 (100)	123,5 (267.4)	122,3 (264.9)	121,2 (262.5)
34,0 (115)	106,5 (226.6)	105,5 (224.4)	104,6 (222.4)
42,0 (140)	80,8 (174.4)	80,4 (173.5)	80,0 (172.5)
44,0 (150)	75,6 (157.6)	75,3 (157.0)	74,9 (156.2)
46,0 (155)			70,1 (148.4)

Boom m (ft)	48,0 (160)	54,9 (180)
Radius		
28,0 (95)	132,5 (271.7)	
30,0 (100)	118,2 (255.5)	114,6 (252.7)
36,0 (120)	94,3 (204.0)	93,3 (201.7)
48,0 (160)	63,2 (136.2)	62,7 (135.2)
60,0 (200)	44,7 (96.0)	44,3 (95.2)
70,0 (230)	34,2 (75.2)	33,9 (74.6)
76,0 (250)	29,0 (63.7)	28,8 (63.2)
82,0 (270)		
88,0 (290)		
100,0 (330)		

Boom m (ft)	48,0 (160)	54,9 (180)
Radius		
28,0 (95)		
30,0 (100)		
36,0 (120)	69,3 (153.0)	
48,0 (160)	58,9 (126.7)	58,4 (125.5)
60,0 (200)	40,4 (86.7)	40,0 (85.7)
70,0 (230)	29,9 (65.7)	29,1 (64.0)
76,0 (250)	24,6 (53.9)	23,9 (52.4)
82,0 (270)	- (43.8)	- (42.4)
88,0 (290)	16,1 (35.0)	15,5 (33.7)
100,0 (330)	9,2 (19.7)	8,7 (18.7)

Meets ANSI B30.5 Requirements - Capacities do not exceed 75% of static tipping load.
 NOTICE: This capacity chart is for reference only and must not be used for lifting purposes.

luffing jib load charts

Liftcrane Luffing Jib Capacities - 18000

Luffing Jib No. 79A on Boom No. 55 or No. 55A With 30,5 m (100') Mast No. 56

239 500 kg (529,007 lb) Counterweight 145 150 kg (320,000 lb) Carbody Counterweight

360° Rating

36

80° Boom Angle

Boom m (ft)	48,0 (160)	54,9 (180)	61,0 (200)
Radius			
26,0 (90)	139,1 (288.5)	136,5 (283.1)	134,0 (277.9)
30,0 (100)	117,9 (255.2)	115,7 (250.4)	113,5 (245.7)
36,0 (120)	94,0 (202.6)	92,6 (199.6)	91,0 (196.5)
42,0 (140)			
48,0 (160)			
54,0 (180)			
60,0 (200)			
64,0 (210)			
66,0 (220)			
70,0 (230)			

Boom m (ft)	48,0 (160)	54,9 (180)	61,0 (200)
Radius			
26,0 (90)			
30,0 (100)	116,0 (251.0)	113,6 (245.8)	- (240.8)
36,0 (120)	93,1 (200.8)	91,2 (197.2)	89,4 (193.5)
42,0 (140)	75,2 (162.3)	73,9 (159.3)	72,5 (156.3)
48,0 (160)	62,0 (133.5)	60,9 (131.2)	59,8 (128.7)
54,0 (180)			
60,0 (200)			
64,0 (210)			
66,0 (220)			
70,0 (230)			

Boom m (ft)	48,0 (160)	54,9 (180)
Radius		
38,0 (130)	- (168.4)	
40,0 (135)	75,3 (159.5)	- (155.8)
44,0 (145)	65,5 (143.5)	64,0 (140.2)
48,0 (160)	57,5 (123.7)	56,1 (120.7)
54,0 (180)	47,8 (102.8)	46,6 (100.2)
66,0 (220)	34,0 (73.0)	33,0 (70.9)
78,0 (260)	24,2 (51.4)	23,0 (48.7)
82,0 (270)		- (43.3)
88,0 (290)		
94,0 (310)		

Boom m (ft)	48,0 (160)	54,9 (180)
Radius		
38,0 (130)		
40,0 (135)		
44,0 (145)	- (138.2)	
48,0 (160)	51,1 (118.5)	53,6 (115.3)
54,0 (180)	45,5 (97.7)	44,2 (94.8)
66,0 (220)	31,7 (67.6)	30,0 (64.1)
78,0 (260)	21,5 (45.5)	20,1 (42.6)
82,0 (270)	- (40.9)	- (38.1)
88,0 (290)	14,9 (32.5)	13,7 (29.9)
94,0 (310)		- (21.9)

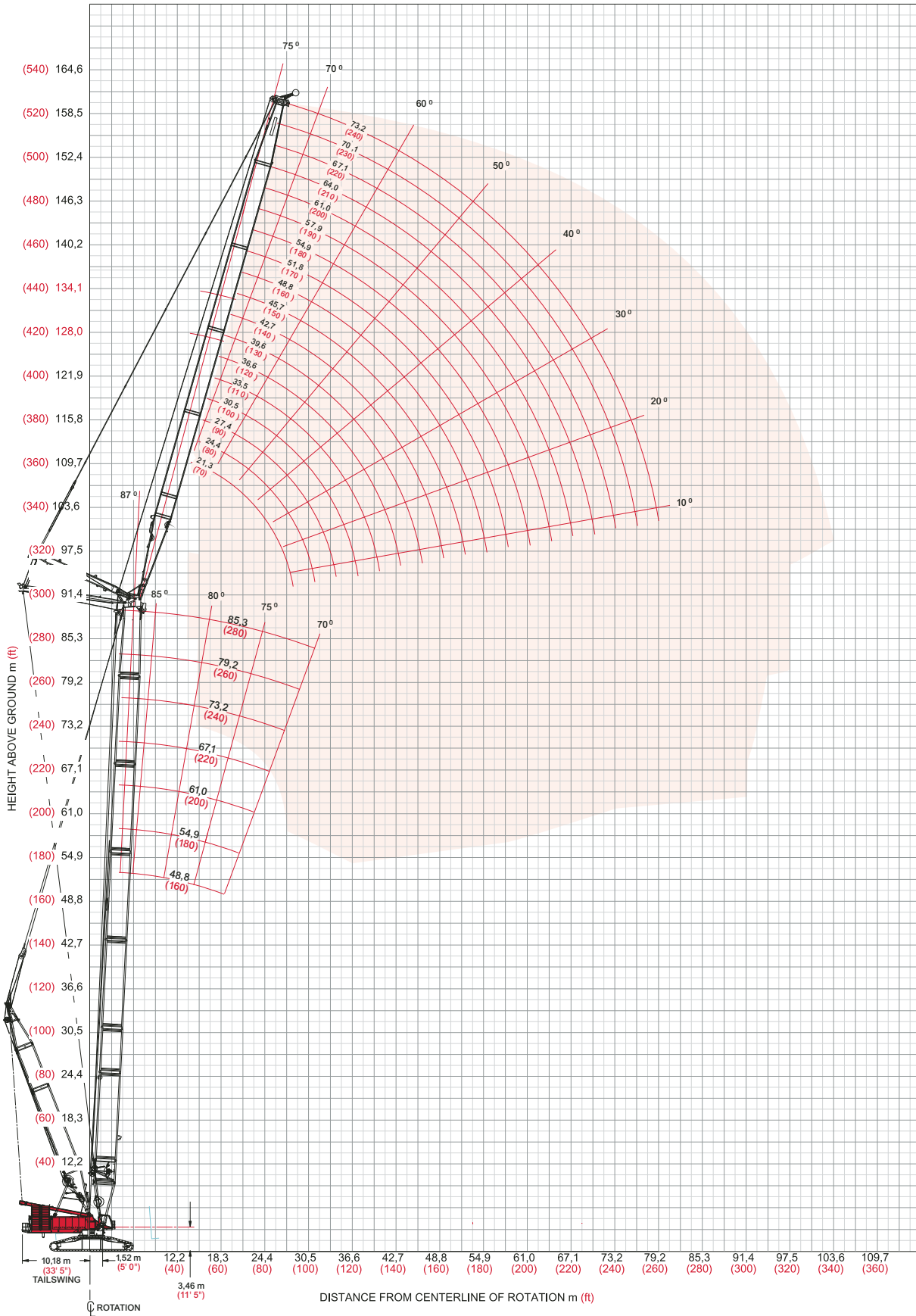
model 18000



Meets ANSI B30.5 Requirements - Capacities do not exceed 75% of static tipping load.
 NOTICE: This capacity chart is for reference only and must not be used for lifting purposes.

Luffing jib range diagram

No. 44 Luffing Jib on No. 55/79A Main Boom



luffing jib load charts

Liftcrane Luffing Jib Capacities - 18000

Luffing Jib No. 44 on Boom No. 55-79A With 30,5 m(100') Mast No. 56

239 500 kg (528,000 lb) Counterweight 145 150 kg (320,000 lb) Carbody Counterweight

360° Rating kg (lb) x 1 000

38

85° / 87* Boom Angle

Luffing Jib Length 21,3 m (70 ft)

Boom m (ft)	48,8 (160)	54,9 (180)	61,0* (200)*	73,2* (240)*	85,4* (280)*
Radius					
13,7 (45)			194,7 (429.3)	167,6 (369.5)	
15,2 (50)	247,5 (545.8)	216,6 (477.7)	- (415.9)	- (359.8)	123,3 (272.0)
18,0 (60)	189,2 (405.1)	197,4 (427.4)	170,8 (368.2)	150,0 (327.7)	119,5 (262.7)
24,0 (80)	117,7 (253.3)	122,2 (262.7)	109,9 (236.6)	115,1 (247.0)	101,0 (220.1)
30,0 (100)					
36,0 (120)					
48,0 (160)					
62,0 (200)					
66,0 (220)					
74,0 (240)					
78,0 (260)					

Luffing Jib Length 36,6 m (120 ft)

Boom m (ft)	48,8 (160)	54,9 (180)	61,0* (200)*	73,2* (240)*	85,4* (280)*
Radius					
13,7 (45)					
15,0 (50)					
18,0 (60)				144,8 (317.7)	115,1 (253.5)
24,0 (80)	132,3 (285.0)	135,1 (294.9)	123,2 (266.0)	109,1 (238.2)	83,4 (183.4)
30,0 (100)	94,4 (203.4)	97,0 (208.8)	89,4 (192.7)	92,9 (199.3)	77,4 (168.8)
36,0 (120)	72,0 (155.2)	73,6 (158.6)	68,7 (148.2)	70,7 (152.4)	67,6 (147.0)
48,0 (160)					
62,0 (200)					
66,0 (220)					
74,0 (240)					
78,0 (260)					

Luffing Jib Length 54,9 m (180 ft)

Boom m (ft)	48,8 (160)	54,9 (180)	61,0* (200)*	73,2* (240)*	85,4* (280)*
Radius					
30,0 (100)	86,5 (188.7)	85,8 (187.4)	80,7 (176.2)	71,9 (158.5)	56,5 (124.4)
32,0 (110)	82,7 (176.3)	82,3 (175.7)	77,4 (165.6)	70,8 (152.8)	56,0 (122.3)
36,0 (120)	74,2 (159.3)	75,1 (162.8)	70,6 (152.3)	66,8 (146.0)	53,6 (117.2)
46,0 (140)	51,2 (126.6)	52,1 (129.0)	49,3 (121.6)	50,3 (124.3)	46,2 (107.1)
48,0 (160)	47,9 (103.3)	48,8 (105.0)	46,2 (99.6)	47,2 (101.6)	44,8 (97.8)
54,0 (180)	39,8 (85.7)	40,5 (87.1)	38,5 (82.8)	39,2 (84.4)	38,9 (83.9)
62,0 (200)	- (59.6)	- (66.9)		- (58.8)	- (68.7)
66,0 (220)					
74,0 (240)					
78,0 (260)					

Luffing Jib Length 73,2 m (240 ft)

Boom m (ft)	48,8 (160)	54,9 (180)	61,0* (200)*	73,2* (240)*	85,4* (280)*
Radius					
30,0 (100)	- (128.0)	- (123.5)	53,1 (116.8)	46,0 (101.5)	38,6 (85.1)
32,0 (110)	- (125.9)	55,6 (121.6)	52,5 (114.9)	45,8 (100.6)	38,3 (84.2)
36,0 (120)	55,0 (119.8)	54,3 (119.0)	51,2 (112.3)	45,3 (99.9)	37,8 (83.4)
46,0 (140)	43,9 (104.8)	44,0 (104.7)	41,7 (99.1)	41,0 (96.8)	35,5 (81.3)
48,0 (160)	41,8 (90.6)	42,0 (91.1)	39,8 (86.3)	39,4 (85.4)	34,7 (75.9)
54,0 (180)	36,0 (77.8)	36,3 (78.5)	34,5 (74.6)	34,5 (74.6)	32,3 (70.5)
62,0 (200)	29,3 (66.5)	29,7 (67.3)	28,2 (64.0)	28,5 (64.5)	28,4 (64.3)
66,0 (220)	26,3 (56.6)	26,7 (57.3)	25,4 (54.6)	25,7 (55.3)	25,9 (55.7)
74,0 (240)	21,2 (48.0)	21,5 (48.7)	20,5 (46.4)	20,9 (47.2)	21,2 (47.8)
78,0 (260)	16,9 (31.2)	19,0 (35.9)		17,8 (31.1)	19,0 (37.5)

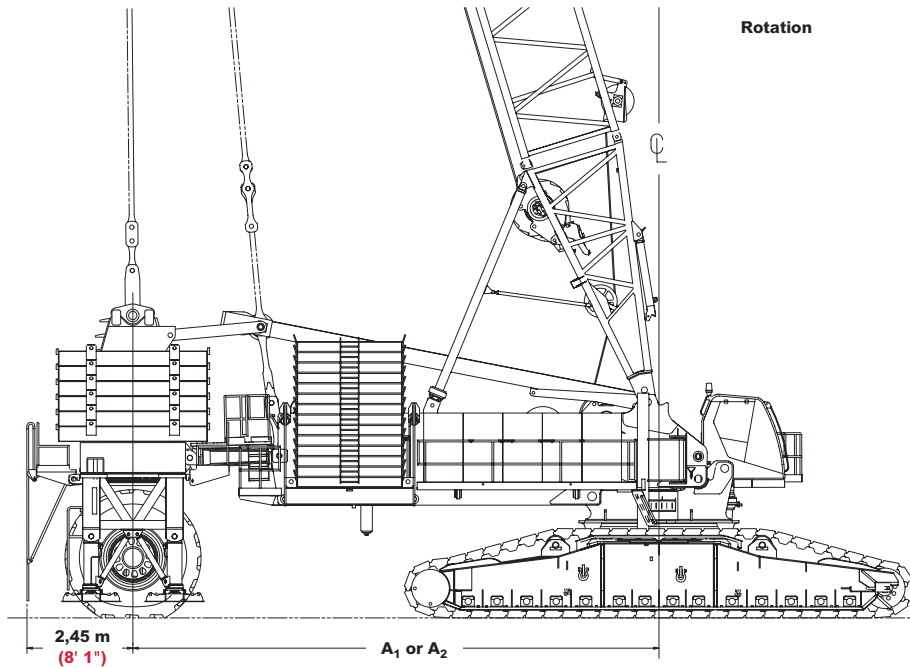
model 18000



Meets ANSI B30.5 Requirements - Capacities do not exceed 75% of static tipping load.
 NOTICE: This capacity chart is for reference only and must not be used for lifting purposes.

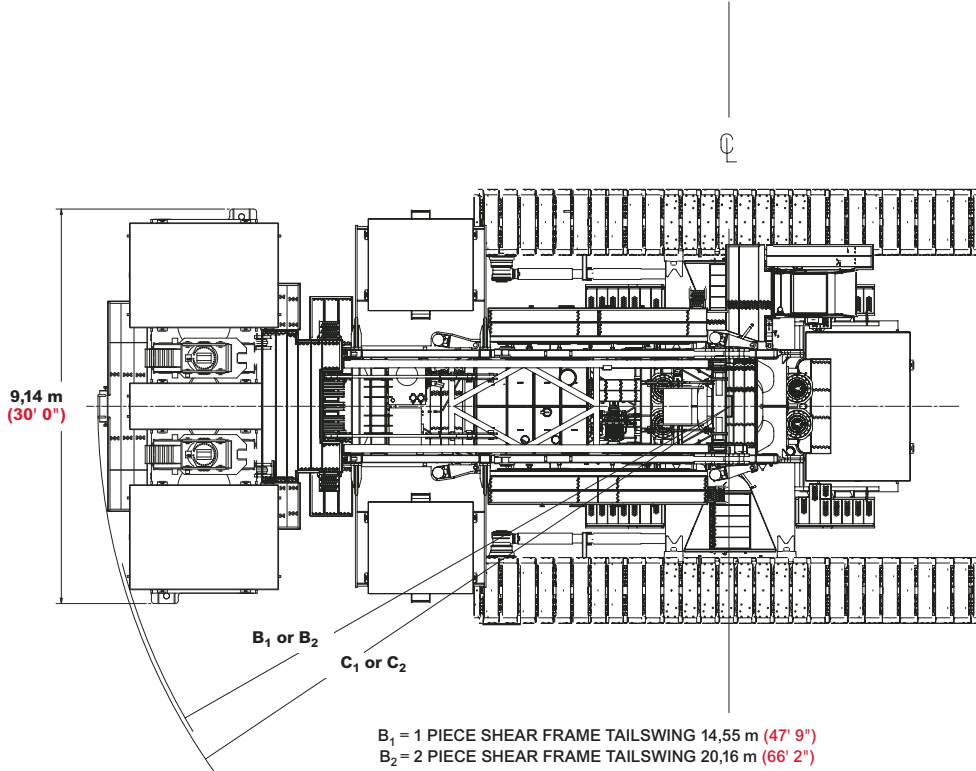
MAX-ER™ outline dimensions

41



A₁ = 1 PIECE SHEAR FRAME 12,19 m (40' 0")
 A₂ = 2 PIECE SHEAR FRAME 17,98 M (59' 0")

WHEELED COUNTERWEIGHT (ONE PIECE SHEAR FRAME FOR 40' RADIUS SHOWN.)

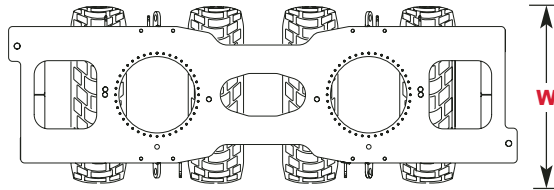


B₁ = 1 PIECE SHEAR FRAME TAILSWING 14,55 m (47' 9")
 B₂ = 2 PIECE SHEAR FRAME TAILSWING 20,16 m (66' 2")

C₁ = 1 PIECE SHEAR FRAME TAILSWING 14,66 m (48' 1")
 C₂ = 2 PIECE SHEAR FRAME TAILSWING 20,44 m (67' 1")

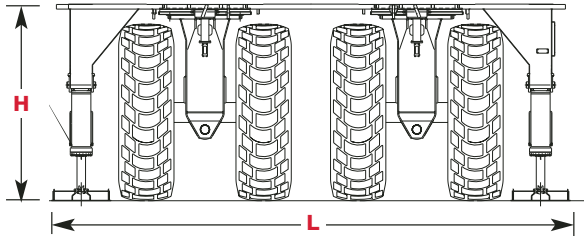
outline dimensions

42



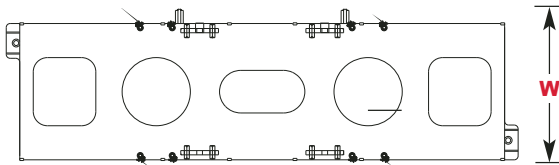
Wheeled Carrier with Tires x 1

Length	9,27 m	30' 5"
Width	3,55 m	11' 8"
Height	3,55 m	11' 8"
Weight	63 299 kg	139,555 lb



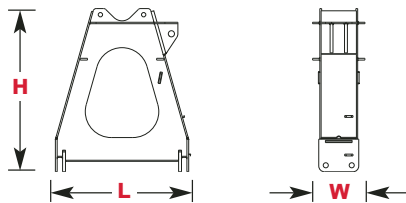
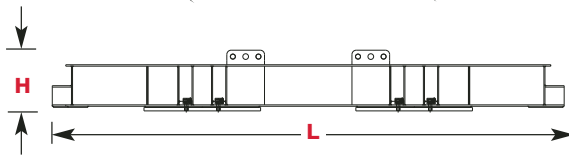
Wheeled Carrier without Tires x 1

Length	9,27 m	30' 5"
Width	3,30 m	10' 10"
Height	3,55 m	11' 8"
Weight	35 791 kg	78,904 lb



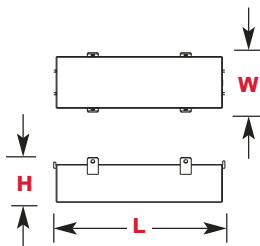
Counterweight Tray x 1

Length	9,14 m	30' 0"
Width	2,71 m	8' 11"
Height	1,03 m	3' 5"
Weight	15 381 kg	33,910 lb



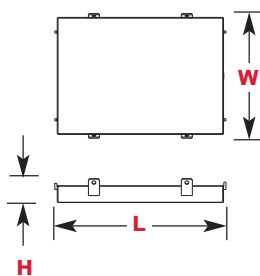
A-Frame x 2

Length	2,38 m	7' 10"
Width	0,92 m	3' 1"
Height	2,87 m	9' 5"
Weight	3 658 kg	8,065 lb



Center Counterweight Box x 4

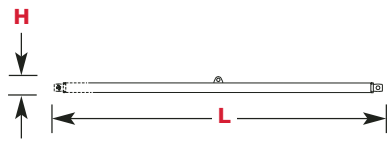
Length	3,56 m	11' 8"
Width	1,24 m	4' 10"
Height	0,93 m	3' 1"
Weight	19 958 kg	44,000 lb



Side Counterweight Box x 12

Length	3,56 m	11' 8"
Width	2,59 m	8' 6"
Height	0,50 m	1' 8"
Weight	19 958 kg	44,000 lb

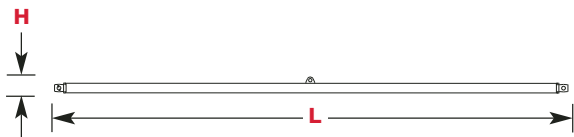
outline dimensions



Struts - 5,5 m (18') x 2

Length	5,79 m	19' 0"
Width	0,28 m	0' 11"
Height	0,28 m	0' 11"
Weight	757 kg	1,670 lb

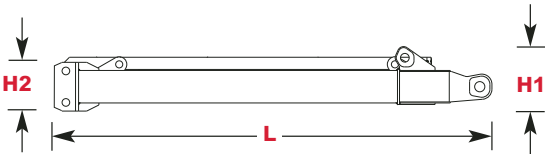
Note: For wheeled counterweight.



Struts - 9,1 m (30') x 2

Length	9,45 m	31' 0"
Width	0,28 m	0' 11"
Height	0,28 m	0' 11"
Weight	1 183 kg	2,610 lb

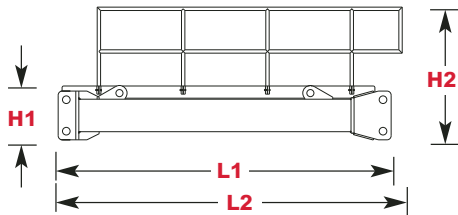
Note: For wheeled counterweight.



Front Shear Frame x 1

Length	3,96 m	13' 0"
Width	3,40 m	11' 2"
Height 1	0,81 m	2' 8"
Weight	3 199 kg	7,051 lb

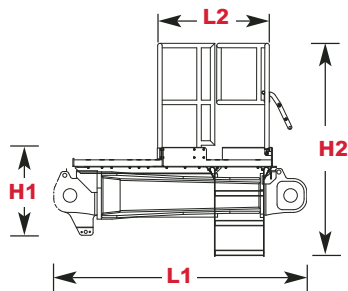
Note: Shown with railings attached in operating position.
Height 2 0,61 m 2' 0"



Rear Shear Frame & Railings x 1

Length 1	4,54 m	14' 11"
Width	3,40 m	11' 2"
Height 1	0,68 m	2' 3"
Weight	3 440 kg	7,582 lb

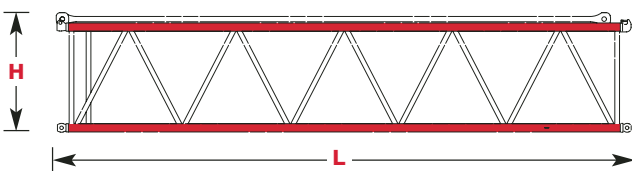
Note: Shown with railings attached in operating position.
Length 2 4,40 m 14' 5"
Height 2 1,66 m 5' 6"



Shear Frame Adapter & Railings x 1

Length 1	2,61 m	8' 7"
Width	3,40 m	11' 2"
Height 1	0,83 m	2' 8"
Weight	2 857 kg	6,298 lb

Note: Shown with railings attached in operating position.
Length 2 1,05 m 3' 5"
Height 2 2,00 m 6' 7"



No. 56 Mast Insert 12,2 m (40') & Straps x 1

Length	12,45 m	40' 10"
Width	3,00 m	9' 10"
Height	2,49 m	8' 2"
Weight	8 085 kg	17,825 lb



Straps 8,1 m (26' 8") x 2

Length	8,41 m	27' 6"
Width	0,08 m	0' 3"
Height	0,28 m	0' 11"
Weight	1 238 kg	2,730 lb

boom combinations

44

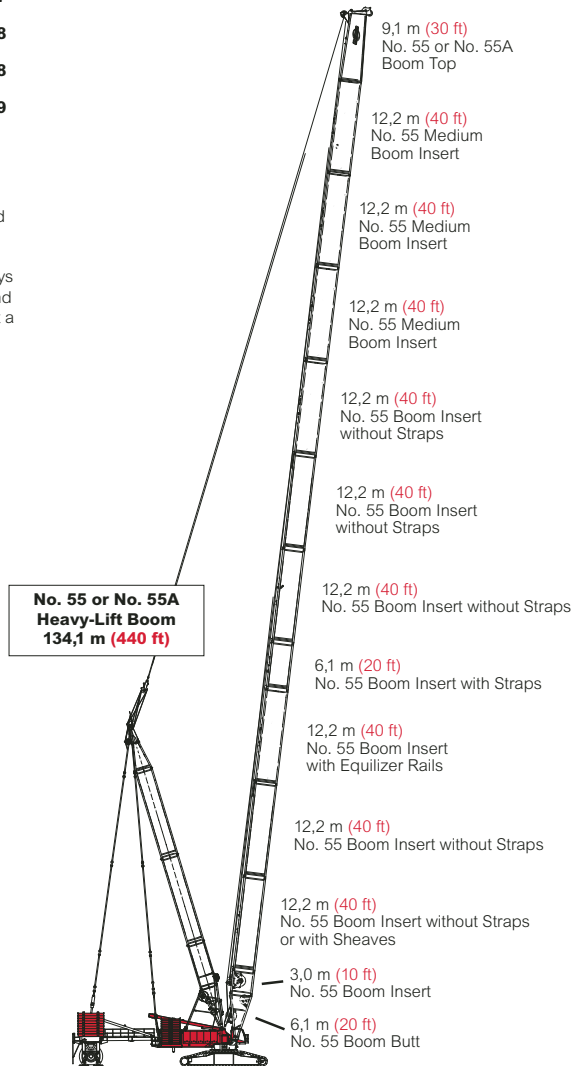
No. 55 or No. 55A Boom Combinations

Boom Length m (ft)	3,0 m (10 ft)	6,1 m (20 ft)	12,2 m (40 ft)
42,7 (140)	1	-	2
48,8 (160)	1	1	2
54,9 (180)	1	-	3
61,0 (200)	1	1	3
67,1 (220)	1	2	3
73,2 (240)	1	1	4
79,2 (260)	1	2	4
85,3 (280)	1	1	5
91,4 (300)	1	2	5
97,5 (320)	1	1	6
103,7 (340)	1	2	6
109,8 (360)	1	1	7
115,9 (380)	1	2	7
122,0 (400)	1	1	8
128,0 (420)	1	2	8
134,1 (440)	1	1	9

Note: 36,6 m (120') basic boom consists of 6,1 m (20') butt, 3,0 m (10') insert with drum, 6,1 m (20') insert, 12,2 m (40'), and 9,1 m (30') top.

Note: The first 12,2 m (40') insert is always a 12,2 m (40') with equal plat. The second 12,2 m (40') insert can be with or without a 12,2 m (40') luffing drum storage.

* May use a 12,2 m (40') No. 55 or No. 55A insert with or without sheaves.



**Model 18000 with MAX-ER
No. 55 or No. 55A Heavy-Lift Main Boom
134,1 m (440 ft)**

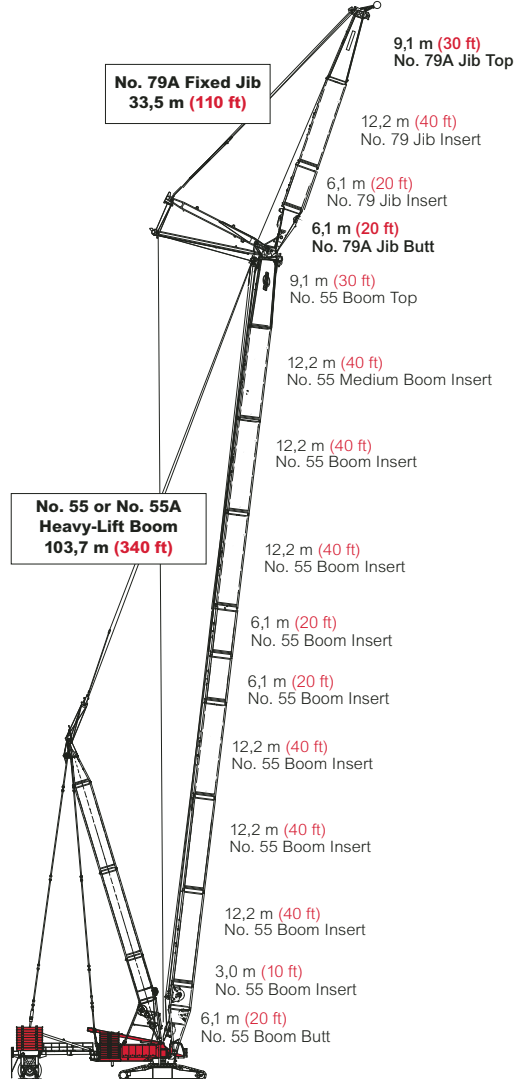
boom combinations

No. 79A Fixed Jib Combinations

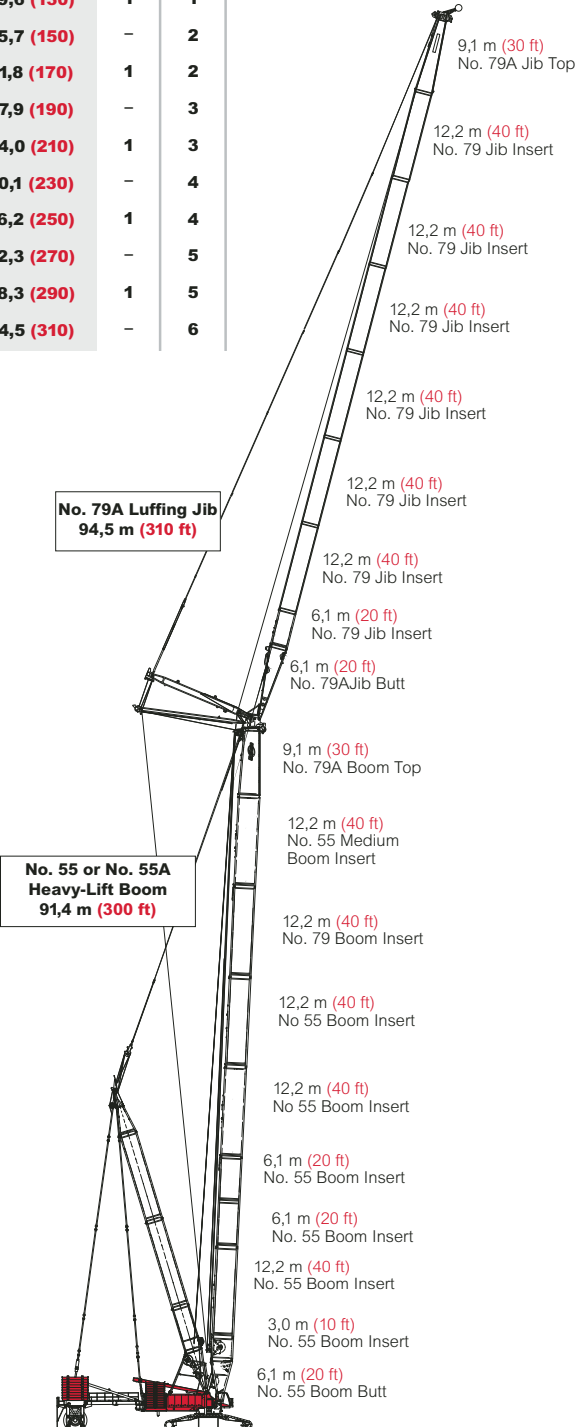
Luffing Jib Length m (ft)	Boom Inserts	
	6,1 m (20 ft)	12,2 m (40 ft)
27,4 (90)	-	-
33,5 (110)	1	-
39,6 (130)	-	1
45,7 (150)	1	1

No. 79A Luffing Jib Combinations

Luffing Jib Length m (ft)	Boom Inserts	
	6,1 m (20 ft)	12,2 m (40 ft)
27,4 (90)	1	-
33,5 (110)	-	1
39,6 (130)	1	1
45,7 (150)	-	2
51,8 (170)	1	2
57,9 (190)	-	3
64,0 (210)	1	3
70,1 (230)	-	4
76,2 (250)	1	4
82,3 (270)	-	5
88,3 (290)	1	5
94,5 (310)	-	6



**Model 18000 with MAX-ER
No. 79A Fixed Jib on
No. 55 or No. 55A Heavy-Lift Main Boom
137,2 m (450 ft)**

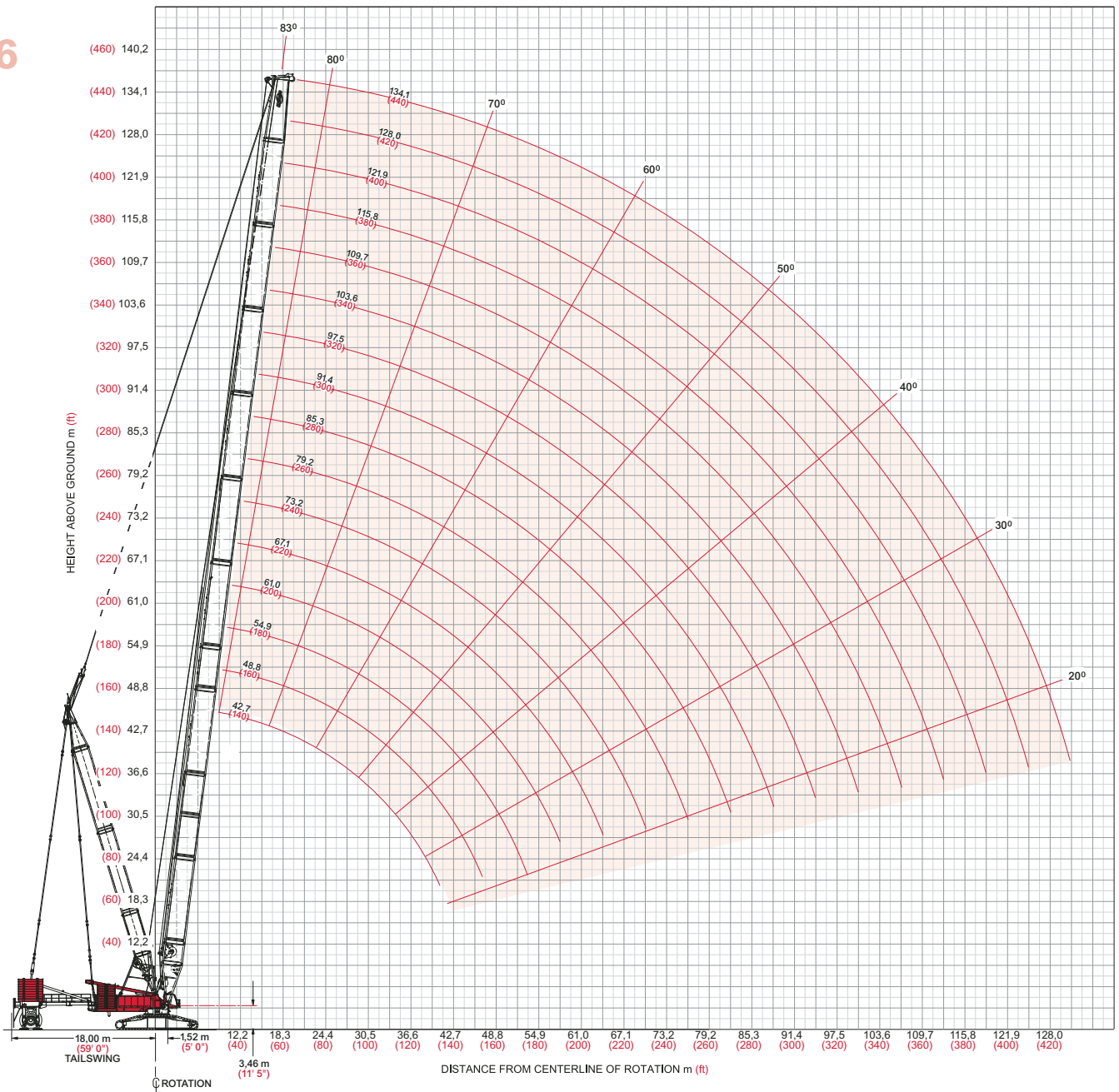


**Model 18000 with MAX-ER
No. 79A Luffing Jib on
No. 55 or No. 55A Heavy-Lift Main Boom
185,9 m (610 ft)**

heavy-lift boom range diagram

No. 55 or No. 55A Main Boom

46



model 18000 MAX-ER™



heavy-lift load charts

18000 MAX-ER
Boom No. 55 or No. 55A , with 42,7m (140')
No. 56 Mast with 18m (59') position

223 170 kg (492,000 lb) Counterweight 145 150 kg (320,000 lb) Carbody Counterweight
 390 090 kg (860,000 lb) Wheeled Counterweight or Hanging Counterweight

360° Rating kg (lb) x 1 000

Boom m (ft)	42,7 (140)	54,9 (180)	67,1 (220)	79,2 (260)	91,4 (300)	103,6 (340)	115,8 (380)	134,0 (440)
Radius								
8,5 (28)	750,0 (1653.5)							
10,0 (34)	750,0 (1653.5)	684,8 (1509.8)						
12,0 (40)	715,7 (1543.3)	684,8 (1509.8)	570,9 (1258.0)					
14,0 (50)	649,9 (1310.1)	647,9 (1303.8)	565,8 (1240.2)	405,6 (894.4)	- (655,0)			
18,0 (60)	502,1 (1089.4)	499,3 (1083.3)	497,8 (1075.8)	405,6 (894.4)	297,1 (655,0)	223,1 (491.9)	- (374.2)	
20,0 (70)	450,8 (929.9)	448,0 (923.9)	444,6 (916.3)	405,6 (894.4)	297,1 (655,0)	223,1 (491.9)	169,7 (374.2)	117,2 (258.5)
24,0 (80)	373,1 (809.2)	370,4 (803.3)	367,0 (795.7)	364,8 (789.4)	297,1 (655,0)	223,1 (491.9)	169,7 (374.2)	117,2 (258.5)
30,0 (100)	294,5 (638.4)	291,9 (632.8)	288,5 (625.2)	285,6 (618.9)	284,2 (612.1)	223,1 (491.9)	169,7 (374.2)	117,2 (258.5)
36,0 (120)	233,1 (502.2)	239,1 (518.0)	235,6 (510.4)	232,8 (504.2)	229,7 (497.4)	223,1 (491.9)	169,5 (373.7)	116,4 (256.5)
42,0 (140)	181,4 (387.5)	201,0 (435.4)	197,6 (427.7)	194,8 (421.6)	191,8 (414.9)	189,9 (410.9)	167,2 (368.2)	115,1 (253.4)
48,0 (160)		167,5 (359.6)	168,9 (365.4)	166,1 (359.3)	163,1 (352.6)	161,3 (348.7)	159,4 (343.7)	113,6 (250.1)
54,0 (180)		134,5 (285.7)	146,4 (316.6)	143,7 (310.6)	140,7 (304.0)	138,9 (300.1)	136,6 (295.1)	112,0 (246.5)
66,0 (220)				- (237.2)	- (232.7)	106,2 (229.0)	103,9 (224.0)	110,3 (216.2)
72,0 (240)				- (197.2)	- (205.8)	- (202.1)	- (197.2)	- (189.4)
78,0 (260)					82,7 (175.8)	83,3 (179.3)	81,1 (174.5)	77,6 (166.7)
84,0 (280)					- (145.6)	- (157.4)	- (154.9)	- (147.2)
90,0 (300)					- (-)	62,3 (131.6)	64,2 (137.8)	60,7 (130.2)
96,0 (320)						- (107.9)	- (115.2)	- (115.3)
102,0 (340)							45,3 (94.8)	47,4 (99.6)
108,0 (360)							- (75.6)	- (81.6)
114,0 (380)								31,7 (65.3)
130,0 (430)								13,9 (28.0)



Meets ANSI B30.5 Requirements - Capacities do not exceed 75% of static tipping load.
 NOTICE: This capacity chart is for reference only and must not be used for lifting purposes.

heavy-lift load chart

48

18000 MAX-ER
Boom No. 55 or No. 55A , with 42,7m (140')
No. 56 Mast with 12m (40') position

223 170 kg (492,000 lb) Counterweight 145 150 kg (320,000 lb) Carbody Counterweight
 390 090 kg (860,000 lb) Wheeled Counterweight or Hanging Counterweight
 360° Rating kg (lb) x 1 000

Boom m (ft)	42,7 (140)	54,9 (180)	67,1 (220)	79,2 (260)	91,4 (300)	103,6 (340)	115,8 (380)	134,0 (440)
Radius								
8,5 (28)	750,0 (1653.5)							
10,0 (34)	729,8 (1543.3)	684,8 (1509.8)						
12,0 (40)	614,4 (1333.6)	611,4 (1327.0)	570,9 (1258.0)					
14,0 (50)	526,7 (1066.1)	523,8 (1059.8)	522,6 (1052.4)	405,6 (894.4)	- (655,0)			
18,0 (60)	407,8 (884.7)	405,0 (878.6)	401,6 (871.1)	394,8 (864.8)	297,1 (655,0)	223,1 (491.9)	- (374.2)	
20,0 (70)	365,7 (753.6)	362,9 (747.6)	359,5 (740.0)	356,7 (733.8)	297,1 (655,0)	223,1 (491.9)	169,7 (374.2)	117,2 (258.5)
24,0 (80)	299,3 (646.1)	299,1 (648.4)	295,7 (640.9)	292,8 (634.6)	287,8 (627.8)	223,1 (491.9)	169,7 (374.2)	117,2 (258.5)
30,0 (100)	222,7 (480.4)	234,6 (508.3)	231,1 (500.7)	228,3 (494.4)	225,2 (487.6)	220,5 (483.6)	169,7 (374.2)	117,2 (258.5)
36,0 (120)	171,3 (368.6)	189,2 (407.2)	187,7 (406.3)	184,8 (400.1)	181,8 (393.3)	180,0 (389.3)	169,5 (373.7)	116,4 (256.5)
42,0 (140)	131,4 (280.0)	149,8 (322.1)	156,4 (338.3)	153,6 (332.1)	150,5 (325.4)	148,7 (321.5)	146,4 (316.4)	115,1 (253.4)
48,0 (160)		119,9 (256.9)	128,7 (276.3)	130,0 (280.9)	126,9 (274.2)	125,2 (270.3)	122,9 (265.3)	113,6 (250.1)
54,0 (180)		94,7 (199.7)	104,6 (223.9)	110,8 (237.1)	108,5 (234.2)	106,8 (230.3)	104,5 (225.3)	100,9 (217.4)
66,0 (220)				74,3 (158.1)	77,4 (165.0)	79,8 (171.8)	77,5 (166.8)	74,0 (159.0)
72,0 (240)				- (127.1)	- (134.6)	- (142.0)	- (144.7)	- (136.9)
78,0 (260)					51,5 (108.5)	54,8 (115.8)	56,3 (119.2)	55,2 (118.2)
84,0 (280)					- (85.1)	- (93.2)	- (96.4)	- (98.3)
90,0 (300)					- (-)	35,2 (73.2)	36,7 (76.5)	37,4 (78.0)
96,0 (320)						- (54.7)	- (59.0)	- (60.2)
102,0 (340)							21,4 (43.1)	22,0 (44.6)
108,0 (360)							- (28.2)	- (30.7)
114,0 (380)								9,8 (18.0)
130,0 (430)								

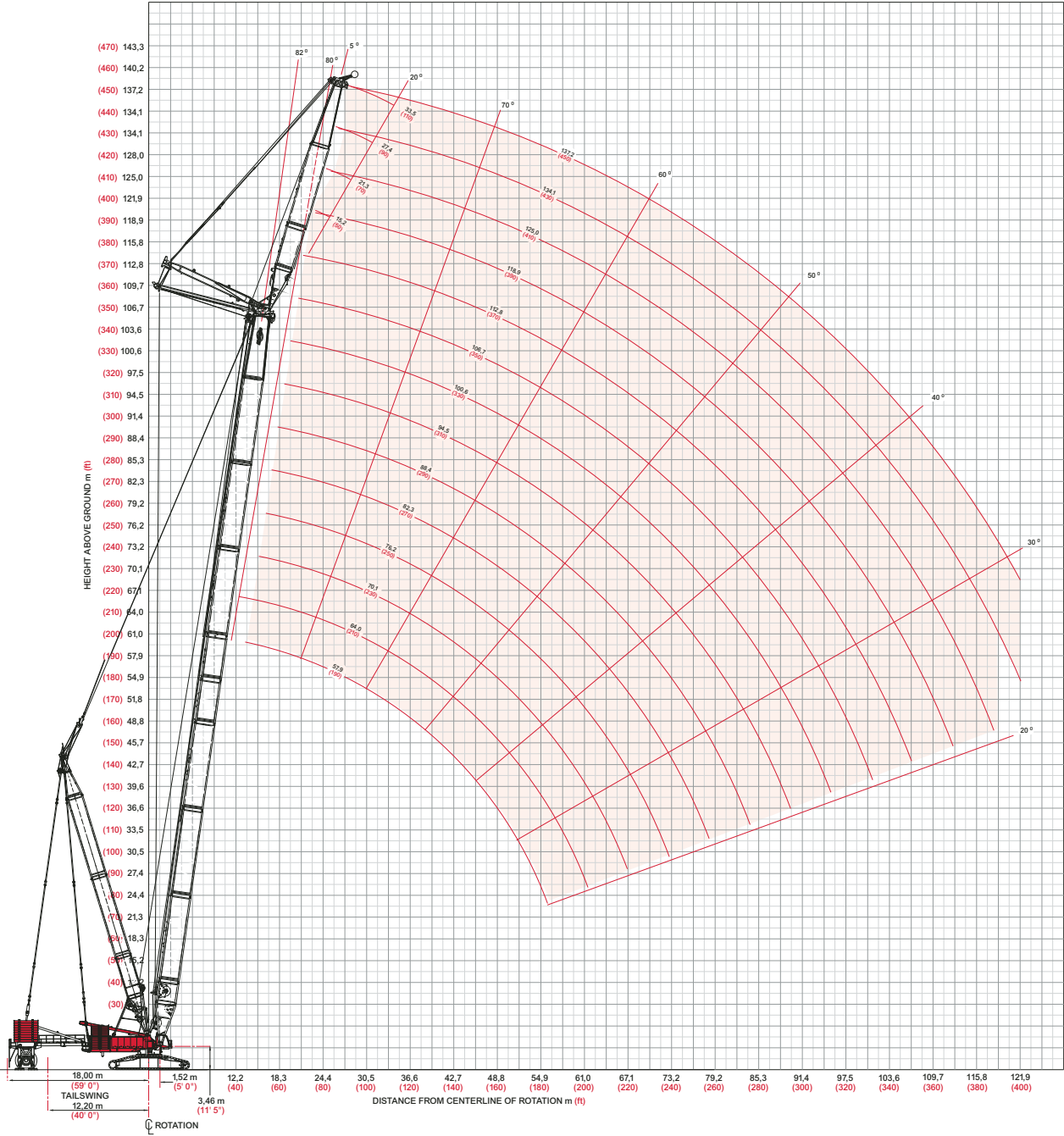
model 18000 MAX-ER™



Meets ANSI B30.5 Requirements - Capacities do not exceed 75% of static tipping load.
 NOTICE: This capacity chart is for reference only and must not be used for lifting purposes.

fixed jib load charts

No. 79A fixed Jib No. 79A with 15,2 m (50 ft) Strut on Boom No. 55 or 55A with 30,5 m (100 ft) mast No. 56



Meets ANSI B30.5 Requirements - Capacities do not exceed 75% of static tipping load.
 NOTICE: This capacity chart is for reference only and must not be used for lifting purposes.

fixed jib load charts

50

Liftcrane Jib Capacities - 18000 MAX-ER
Jib No. 79A with 15,2 m (50 ft) Strut on Boom No. 55 or 55A
with 42,7 m (140 ft) mast No. 56

223,170 kg (528,000 lb) Crane Counterweight 145,150 kg (320,000 lb) Carbody Counterweight
 390,090 kg (860,000 lb) Wheeled Counterweight at 18m (59') Position
 360° Rating kg (lb) x 1 000

Boom m (ft)	5° Offset					20° Offset				
	42,7 (140)	61,0 (200)	79,3 (260)	91,4 (300)	103,7 (340)	42,7 (140)	61,0 (200)	79,3 (260)	91,4 (300)	103,7 (340)
Radius										
13,7 (45)	500,0 (1102.4)									
20,0 (70)	444,9 (915.8)	391,7 (855.8)	262,5 (578.8)	- (437.3)		290,8 (619.0)	311,4 (670.5)			
30,0 (100)	286,4 (620.5)	281,3 (609.2)	262,5 (578.8)	198,3 (437.3)	148,6 (327.4)	230,1 (502.6)	264,2 (578.5)	246,0 (542.5)	182,4 (402.3)	131,6 (290.3)
32,0 (120)	266,4 (503.9)	261,2 (492.4)	255,9 (480.6)	198,3 (435.3)	148,0 (323.6)	221,2 (448.8)	256,6 (498.7)	246,0 (488.5)	182,4 (402.3)	131,6 (290.3)
48,0 (160)	151,5 (325.2)	159,9 (344.7)	154,1 (332.8)	150,8 (325.5)	142,6 (313.9)	154,2 (330.9)	161,3 (348.5)	156,6 (338.0)	153,6 (331.4)	130,9 (288.2)
60,0 (200)		114,8 (245.4)	112,9 (243.1)	109,5 (235.7)	107,2 (230.7)		117,3 (250.5)	114,4 (246.5)	111,4 (239.8)	109,3 (235.3)
72,0 (240)		75,7 (179.4)	83,8 (195.8)	81,6 (188.4)	79,4 (170.2)			85,8 (182.5)	82,9 (177.9)	80,9 (173.4)
84,0 (280)			54,7 (144.2)	57,3 (149.8)	59,3 (126.3)				59,1 (123.9)	60,3 (128.7)
90,0 (300)			- (86.4)	- (94.4)	- (100.2)				- (96.8)	- (103.8)
102,0 (340)					- (56.5)					
112,0 (370)					- (28.0)					
122,0 (400)										

Boom m (ft)	5° Offset					20° Offset				
	42,7 (140)	61,0 (200)	79,3 (260)	91,4 (300)	103,7 (340)	42,7 (140)	61,0 (200)	79,3 (260)	91,4 (300)	103,7 (340)
Radius										
13,7 (45)										
20,0 (70)	400,8 (877.6)	340,0 (749.6)	- (464.2)			271,8 (577.6)	-			
30,0 (100)	288,0 (623.8)	283,0 (612.8)	210,5 (464.2)	171,9 (379.1)	130,2 (286.9)	212,4 (463.5)	231,9 (507.5)	206,7 (455.7)	158,3 (349.2)	117,0 (258.0)
32,0 (120)	267,8 (506.9)	262,8 (495.4)	210,5 (464.2)	171,9 (374.8)	129,8 (284.0)	203,6 (410.4)	224,7 (463.6)	206,7 (455.7)	158,3 (349.2)	117,0 (258.0)
48,0 (160)	157,0 (337.5)	160,7 (347.2)	155,3 (335.2)	152,0 (328.0)	125,5 (276.1)	154,5 (337.0)	163,0 (352.2)	158,3 (341.8)	155,3 (335.5)	117,0 (258.0)
60,0 (200)	104,9 (223.3)	119,0 (255.7)	113,8 (245.1)	110,4 (237.7)	108,1 (232.6)		120,6 (260.0)	115,9 (249.6)	112,9 (243.0)	111,1 (238.5)
72,0 (240)		81,3 (172.4)	85,7 (184.2)	82,4 (176.8)	80,0 (171.7)			87,2 (187.2)	84,1 (180.5)	82,1 (176.0)
84,0 (280)			58,5 (123.0)	60,5 (127.3)	59,8 (127.8)			60,4 (126.7)	63,1 (132.5)	61,3 (130.8)
90,0 (300)			- (96.7)	- (101.4)	- (106.1)				- (105.3)	- (111.3)
102,0 (340)				- (57.0)	- (62.3)					- (65.3)
112,0 (370)					16,7 (34.7)					
122,0 (400)										

model 18000 MAX-ER™



Meets ANSI B30.5 Requirements - Capacities do not exceed 75% of static tipping load.
 NOTICE: This capacity chart is for reference only and must not be used for lifting purposes.

fixed jib load charts

Liftcrane Jib Capacities - 18000 MAX-ER
Jib No. 79A with 15,2 m (50 ft) Strut on Boom No. 55 or 55A
with 42,7 m (140 ft) mast No. 56

223,170 kg (528,000 lb) Crane Counterweight 145,150 kg (320,000 lb) Carbody Counterweight
 390,090 kg (860,000 lb) Wheeled Counterweight at 18m (59') Position
 360° Rating kg (lb) x 1 000

Boom m (ft)	5' Offset					20' Offset				
	42,7 (140)	61,0 (200)	79,3 (260)	91,4 (300)	103,7 (340)	42,7 (140)	61,0 (200)	79,3 (260)	91,4 (300)	103,7 (340)
Radius 13,7 (45)										
20,0 (70)	344,1 (755.6)	289,5 (638.4)								
30,0 (100)	282,4 (614.9)	282,0 (614.3)	182,4 (402.2)	134,5 (296.7)	99,7 (220.0)	208,1 (453.9)	213,4 (466.8)	178,2 (392.9)	- (304.5)	
32,0 (120)	268,1 (508.1)	263,4 (496.7)	182,4 (402.2)	134,5 (296.7)	99,7 (220.0)	198,9 (398.2)	206,5 (423.7)	178,2 (392.9)	138,1 (304.5)	104,3 (230.0)
48,0 (160)	160,3 (345.0)	161,2 (348.3)	155,7 (336.2)	134,5 (296.7)	99,7 (220.0)	147,0 (320.3)	163,7 (354.6)	159,4 (344.3)	138,1 (304.5)	104,3 (230.0)
60,0 (200)	110,1 (235.5)	119,7 (258.1)	114,1 (245.8)	110,8 (238.5)	99,7 (220.0)	113,0 (241.6)	121,6 (262.2)	116,8 (251.6)	113,8 (245.1)	103,7 (228.6)
72,0 (240)		85,0 (180.8)	86,1 (185.0)	82,7 (177.5)	80,3 (172.2)		87,8 (186.7)	88,0 (189.0)	84,9 (182.3)	82,8 (177.7)
84,0 (280)			61,3 (129.2)	62,4 (132.4)	60,0 (128.2)			64,0 (134.9)	64,0 (136.8)	61,9 (132.2)
90,0 (300)			- (103.6)	- (106.5)	- (110.4)			- (107.8)	- (112.4)	- (113.8)
102,0 (340)				- (63.0)	- (66.6)					- (71.3)
112,0 (370)				16,6 (34.4)	18,8 (39.4)					20,3 (42.5)
122,0 (400)					- (15.0)					

Boom m (ft)	5' Offset					20' Offset				
	42,7 (140)	61,0 (200)	79,3 (260)	91,4 (300)	103,7 (340)	42,7 (140)	61,0 (200)	79,3 (260)	91,4 (300)	103,7 (340)
Radius 13,7 (45)										
20,0 (70)	- (703.3)									
30,0 (100)	261,7 (569.7)	245,7 (541.8)	158,4 (349.3)			201,0 (438.4)	202,5 (442.9)	- (343.8)		
32,0 (120)	248,2 (488.0)	245,7 (498.0)	158,4 (349.3)	119,7 (264.1)	85,7 (189.0)	192,2 (385.4)	195,7 (400.5)	155,9 (343.8)	121,6 (268.3)	201,4 (201.4)
48,0 (160)	163,0 (350.9)	161,8 (349.7)	155,7 (337.4)	119,7 (264.1)	85,7 (189.0)	142,3 (310.1)	153,4 (334.9)	158,3 (343.8)	121,6 (268.3)	91,3 (201.4)
60,0 (200)	113,8 (243.9)	120,3 (259.6)	114,7 (247.2)	111,4 (239.8)	85,7 (189.0)	117,7 (251.9)	122,8 (264.9)	117,9 (254.1)	115,0 (247.7)	91,2 (201.4)
72,0 (240)	78,5 (166.4)	88,3 (188.2)	86,7 (186.4)	83,3 (178.9)	80,9 (173.5)		92,1 (196.3)	89,1 (191.5)	86,1 (184.8)	82,1 (178.3)
84,0 (280)		60,7 (128.0)	64,1 (135.4)	63,1 (134.9)	60,6 (129.5)		63,0 (132.6)	67,8 (143.1)	65,1 (139.3)	63,0 (134.6)
90,0 (300)		- (101.1)	- (110.2)	- (112.1)	- (111.8)			- (116.5)	- (120.0)	- (116.2)
102,0 (340)			- (67.1)	- (69.2)	- (71.7)				- (74.4)	- (78.2)
112,0 (370)				20,0 (42.1)	21,2 (44.8)					23,5 (49.6)
122,0 (400)					- (21.3)					

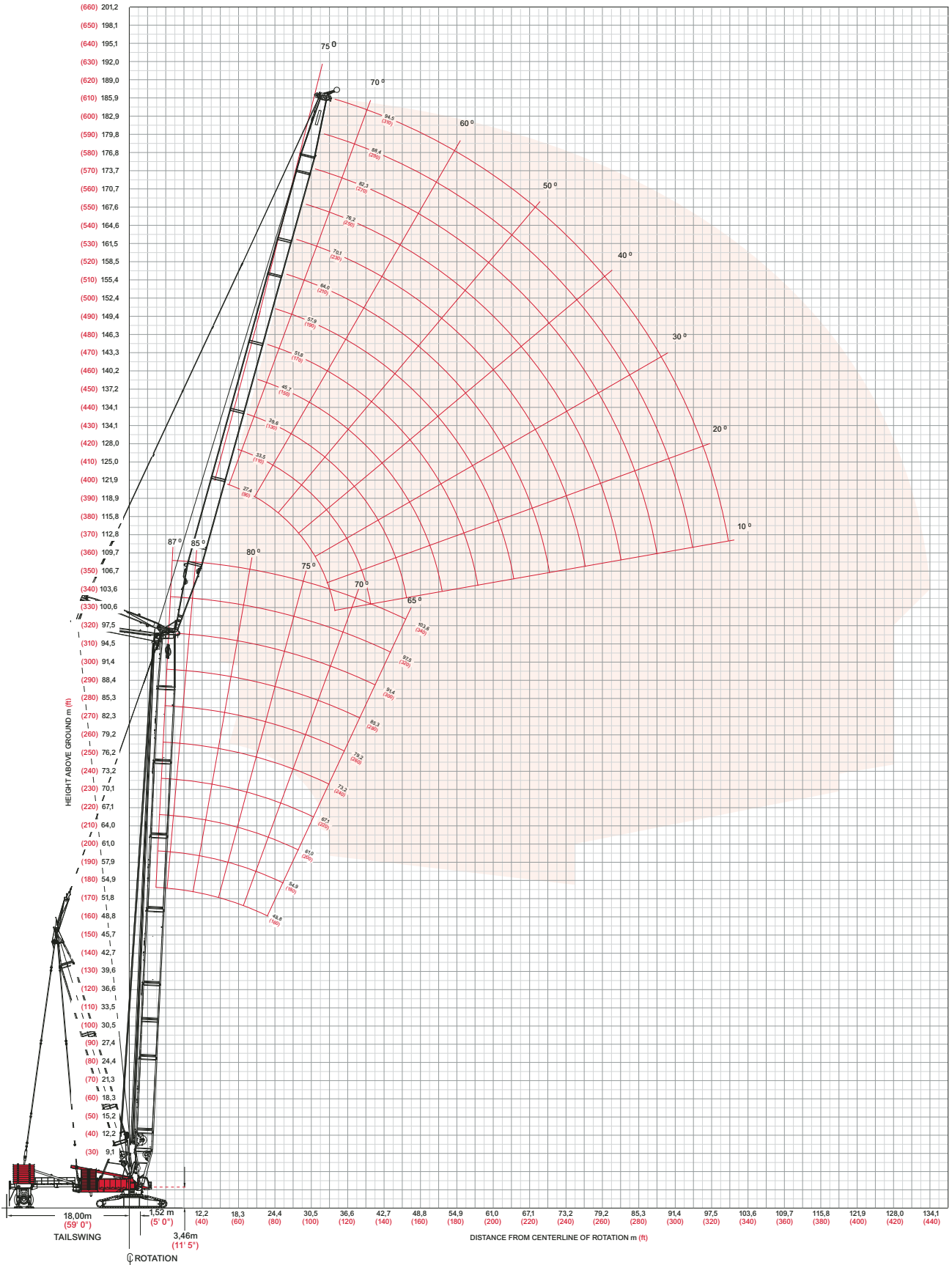
Meets ANSI B30.5 Requirements - Capacities do not exceed 75% of static tipping load.
 NOTICE: This capacity chart is for reference only and must not be used for lifting purposes.

luffing jib range diagram

No. 79A Luffing Jib on No. 55 or No. 55A Main Boom

52

model 18000 MAX-ER™



luffing jib load charts

Liftcrane Luffing Jib Capacities - 18000 MAX-ER

Luffing Jib No. 79a on Boom No. 55 or No. 55A With 42,7m (140') Mast No. 56

223 170 kg (492,000 lb) Counterweight 145 150 kg (320,000 lb) Carbody Counterweight

390 090 kg (860,000 lb) Wheeled Counterweight or Hanging Counterweight

360° Rating for wide crawler arrangement or narrow crawler arrangement with outriggers **kg (lb) x 1 000**

54

80° Boom Angle

		Boom m (ft)	48,8 (160)	61,0 (200)	79,2 (260)	91,4 (300)		
Luffing Jib Length 27,4 m (90 ft)	Radius							
	22,0 (75)							
	24,0 (80)		-					
	26,0 (90)		309,2 (650.5)	295,3 (631.2)				
	30,0 (100)		251,4 (539.5)	267,5 (581.5)	191,5 (420.9)	-		
	32,0 (110)		225,0 (458.4)	251,8 (512.9)	177,4 (395.5)	143,7 (314.1)		
	36,0 (120)		177,0 (363.5)	204,5 (438.3)	169,2 (368.0)	138,3 (301.0)		
	42,0 (140)				148,2 (323.7)	122,4 (266.6)		
	48,0 (160)							
	54,0 (180)							
60,0 (200)								

		Boom m (ft)	48,8 (160)	61,0 (200)	79,2 (260)	91,4 (300)		
Luffing Jib Length 45,7 m (150 ft)	Radius							
	22,0 (75)							
	24,0 (80)							
	26,0 (90)							
	30,0 (100)		-					
	32,0 (110)		215,5 (464.9)	189,5 (410.2)				
	36,0 (120)		192,2 (411.9)	178,9 (390.4)	130,9 (287.0)			
	42,0 (140)		149,5 (321.5)	157,4 (341.5)	119,5 (260.3)	97,6 (213.0)		
	48,0 (160)		121,0 (260.1)	130,1 (279.4)	105,9 (229.7)	88,1 (191.5)		
	54,0 (180)		97,7 (198.1)	106,9 (229.6)	92,9 (201.3)	78,4 (170.2)		
60,0 (200)				83,6 (183.1)	70,6 (153.9)			

		Boom m (ft)	48,8 (160)	61,0 (200)	79,2 (260)	91,4 (300)		
Luffing Jib Length 70,1 m (230 ft)	Radius							
	38,0 (130)							
	46,0 (150)		112,0 (248.1)	105,0 (232.0)	79,0 (174.7)			
	50,0 (170)		104,3 (222.2)	100,5 (216.2)	76,3 (164.7)	61,9 (134.1)		
	60,0 (200)		81,6 (175.2)	85,6 (185.5)	66,5 (144.4)	54,7 (119.0)		
	70,0 (230)		62,5 (137.5)	65,9 (145.1)	55,9 (123.2)	46,6 (102.7)		
	78,0 (260)		48,8 (95.5)	53,8 (115.1)	48,8 (105.7)	41,0 (88.9)		
	88,0 (290)				-	37,7 (83.7)		
	96,0 (320)							
	106,0 (350)							
112,0 (370)								

		Boom m (ft)	48,8 (160)	61,0 (200)	79,2 (260)	91,4 (300)		
Luffing Jib Length 94,5 m (310 ft)	Radius							
	38,0 (130)							
	46,0 (150)							
	50,0 (170)		64,8 (138.4)	-				
	60,0 (200)		51,9 (111.8)	53,1 (114.7)	45,8 (101.0)	37,0 (81.2)		
	70,0 (230)		39,5 (86.9)	41,4 (91.1)	39,3 (86.5)	34,0 (74.9)		
	78,0 (260)		30,7 (64.9)	32,6 (69.3)	32,0 (68.1)	30,9 (67.2)		
	88,0 (290)		-	23,1 (50.3)	23,4 (51.1)	24,7 (53.8)		
	96,0 (320)		-	16,6 (34.2)	17,4 (36.0)	18,7 (38.9)		
	106,0 (350)			-	-	-		
112,0 (370)						8,7 (19.0)		



Meets ANSI B30.5 Requirements - Capacities do not exceed 75% of static tipping load.
 NOTICE: This capacity chart is for reference only and must not be used for lifting purposes.

Luffing jib load charts

Liftcrane Luffing Jib Capacities - 18000 MAX-ER
Luffing Jib No. 79A on Boom No. 55 or No. 55A With 42,7m (140') Mast No. 56

223 170 kg (492,000 lb) Counterweight 145 150 kg (320,000 lb) Carbody Counterweight
 390 090 kg (860,000 lb) Wheeled Counterweight or Hanging Counterweight

360° Rating for wide crawler arrangement or narrow crawler arrangement with outriggers kg (lb) x 1 000

55

70° Boom Angle

	48,8 (160)	61,0 (200)	79,2 (260)	91,4 (300)
Luffing Jib Length 27,4 m (90 ft)	Radius			
	30,0 (100)			
	36,0 (120)	- (503.0)		
	38,0 (130)	219,1 (462.0)	- (447.0)	
	42,0 (140)	196,7 (426.4)	190,4 (412.8)	
	44,0 (150)	186,1 (367.7)	181,1 (382.9)	- (360.7)
	50,0 (170)		157,0 (-)	148,2 (299.4)
	56,0 (190)			130,1 (263.7)
	64,0 (210)			124,3 (263.7)
	70,0 (230)			

	48,8 (160)	61,0 (200)	79,2 (260)	91,4 (300)
Luffing Jib Length 45,7 m (150 ft)	Radius			
	30,0 (100)			
	36,0 (120)			
	38,0 (130)			
	42,0 (140)			
	44,0 (150)	- (389.0)		
	50,0 (170)	150,7 (310.8)	- (326.5)	
	56,0 (190)	122,0 (252.9)	135,7 (288.1)	- (269.1)
	64,0 (210)	94,4 (208.2)	108,1 (238.3)	108,7 (239.7)
	66,0 (220)		101,6 (217.2)	104,8 (226.8)
70,0 (230)			97,6 (215.0)	
			99,3 (214.8)	
			98,7 (214.8)	
			92,5 (203.6)	

	48,8 (160)	61,0 (200)	79,2 (260)	91,4 (300)
Luffing Jib Length 70,1 m (230 ft)	Radius			
	48,0 (160)			
	52,0 (180)			
	60,0 (200)	100,3 (217.7)		
	70,0 (230)	77,6 (170.8)	87,3 (192.0)	73,8 (162.8)
	78,0 (260)	63,0 (134.6)	70,1 (149.7)	73,8 (162.8)
	88,0 (290)	47,9 (104.5)	54,4 (118.9)	63,8 (139.4)
	96,0 (320)			52,2 (110.9)
	106,0 (350)			52,7 (114.0)
	112,0 (370)			
128,0 (420)				

	48,8 (160)	61,0 (200)	79,2 (260)	91,4 (300)
Luffing Jib Length 94,5 m (310 ft)	Radius			
	48,0 (160)			
	52,0 (180)			
	60,0 (200)			
	70,0 (230)			
	78,0 (260)	39,6 (84.5)	43,5 (93.0)	
	88,0 (290)	29,1 (63.4)	33,1 (72.2)	34,8 (87.1)
	96,0 (320)	21,8 (45.3)	25,4 (53.1)	28,1 (59.2)
	106,0 (350)	- (30.0)	- (36.7)	- (43.4)
	112,0 (370)	10,2 (21.6)	12,8 (27.3)	15,8 (33.9)
128,0 (420)			18,7 (40.1)	
			8,8 (19.4)	

Meets ANSI B30.5 Requirements - Capacities do not exceed 75% of static tipping load.
 NOTICE: This capacity chart is for reference only and must not be used for lifting purposes.

Manitowoc Crane CARE

56

CraneCARE is Manitowoc's comprehensive service and support program. It includes classroom and on-site training, prompt parts availability, expert field service, technical support and documentation — for every one of the more than 7,000 Manitowoc cranes currently in use throughout the world.

That's commitment you won't find anywhere else.

That's **CraneCARE**.

Service Training

Manitowoc specialists work with you in our training center and in the field to make sure you know how to get maximum performance, reliability, and life from your cranes.

Manitowoc Cranes Technical Training Center provides valuable multi-level training, which is available for all models and attachments, in the following format:

- **Basic** – Provides technicians with the basic skills required in our Level I and II classes covering hydraulic and electrical theory and schematics, pump, motor, control, and LMI operation, and the use of meters and gauges.
- **Level 1** – This model-specific class covers theory and offers hands-on training and trouble shooting for all crane systems.
- **Level 2** – This model-specific class provides in depth coverage of all crane systems and components, and advanced troubleshooting of simulated faults.
(Requires Level 1.)
- **Level 3/Master** – Covering all EPIC models and the 4100W, this class stresses high level system knowledge and trouble shooting of simulated faults.
(Requires Level 2.)

Parts Availability

Genuine Manitowoc replacement parts are accessible through your distributor 24 hours a day, 7 days a week, 365 days a year.

Service Interval Kits

Provides all the parts required by Manitowoc's Preventative Maintenance Checklist.

Hydraulic Filter Kit A06893

- Consists of the following:
 - Filter Element - Hydraulic in Tank (4x Part No. A00652)

Cummins Model QSZ15-C600 Diesel
– Part No. A01868 Service Interval Kits

200 Hour Kit – Part No. A06023

Consists of the following:

Engine

- Filter Oil (1x Part No. A04795)
- Filter Water (1x Part No. A04794)
- Filter Fuel (1x Part No. A04793)

1,000 Hour Kit – Part No. A06891

Consists of the following:

Engine

- Filter Air Cleaner - Primary (1x Part No. A06016)
- Filter Oil (1x Part No. A04795)
- Filter Water (1x Part No. A04794)
- Filter Fuel (1x Part No. A04793)

Hydraulic

- Filter Element - Hydraulic in Tank (4x Part No. A00652)
- Element - Hydraulic Tank Breather (1x Part No. A06021)

2,000 Hour Kit – Part No. A06892

Consists of the following:

Engine

- Filter, Air Cleaner - Primary (1x Part No. A06016)
- Filter, Air Cleaner - Safety (1x Part No. A06017)
- Filter, Oil (1x Part No. A04795)
- Filter, Water (1x Part No. A04794)
- Filter, Fuel (1x Part No. A04793)
- Ether, (Bottle) (1x Part No. A06019)
- Sensor, Coolant Level (1x Part No. A06020)
- Belt, Fan (1x Part No. A04791)
- Belt, Alternator (set of two) (1x Part No. A04792)
- Filter, Element (1x Part No. A06021)

Hydraulic

- Filter Element - No substitutions allowed
- Filter - Hydraulic In-Tank Suction (4x Part No. A00652)

Kit, Engine Coolant Additive (SCA) Test
(1x Part No. A05360)

Kit, Seal (for hydraulic in tank filter)
(1x Part No. A006515)

Seal, Radial (for air cleaner)
(1x Part No. A06018)

Manitowoc Crane CARE

Hydraulic Test Kit – Part No. 4997916

Protect your investment by demanding Genuine Manitowoc Parts Service Kits. The Hydraulic Service Kit consist of the following:

- All hydraulic fittings to access all pressures and flows
- Hydraulic flow meters and pressure gauges to record hydraulic data.
- Electrical “Break out” harnesses to access voltages on all electrical circuits on all machines.
- Fluke® Digital volt ohm meter, as used in all Manitowoc service literature.

Hydraulic Test Kit with case – Part No. 4997929

The above kit (Part No. 4299791-6) plus a custom heavy-duty carrying case.

U.S. Standard Tools Kit – Part No. 4999760

All standard tools needed to properly maintain and service your crane. (Does not include torque wrench.)

Field Service

Factory-trained service experts are always ready to help maintain your crane’s peak performance.

For a worldwide listing of dealer locations, please consult our website at:
www.manitowoccranegroup.com

Technical Support

Manitowoc’s dealer network and factory personnel are available 24 hours a day, 7 days a week, 365 days a year to answer your technical questions and more, with the help of computerized programs that simplify crane selection, lift planning, and ground-bearing calculations.

For a worldwide listing of dealer locations, please consult our website at:
www.manitowoccranegroup.com

Technical Documentation

Manitowoc has the industry’s most extensive documentation, and the easiest to understand, available in major languages and formats that include print, disk, and videotape.

Additional copies available through your Authorized Manitowoc Distributor.

- **Crane Operator’s Manual – Part No. 899721**
- **Crane Parts Manual – Part No. 899720**
- **Crane Capacity Manual – Part No. 899794**

- **Crane Vendor Manual – Part No. 899722**
- **Service Manual (EPIC) – Part No. 899732**
- **Luffing Jib Operator’s/Parts Manual – Part No. 899726**
- **Capacity Chart Manual - Attachments – Part No. 899795**

CD rom versions of the Operator’s and Parts Manuals are shipped with each crane.

Also available are the following CDs:

- **Crane CARE Owner CD – Part No. 9828100530**
- **Ground Bearing Pressure Estimator CD**
- **Crane Selection and Planning Software (CompuCRANE®)**
- **EPIC® Crane Library** CD consisting of capacity charts, range diagrams, wire rope specifications, travel specifications, crane weights, counterweight arrangements, luffing jib raising procedures, operating range diagrams, drum and lagging charts, boom rigging drawings, jib rigging drawings, outline dimensions, and wind condition charts.

Available from your Authorized Manitowoc Cranes Distributor, these VHS videos are available in NTSC, PAL and SECAM formats.

- **Your Capacity Chart Video – Part No. 899737**
- **Respect the Limits Video – Part No. 899734**
- **Crane Safety Video – Part No. 899736**
- **Boom Inspection/Repair Video – Part No. 899738**

Crane CARE Package

Manitowoc has assembled all of the available literature, CD’s, and videos listed above plus several Manitowoc premiums into one complete CraneCARE Package.

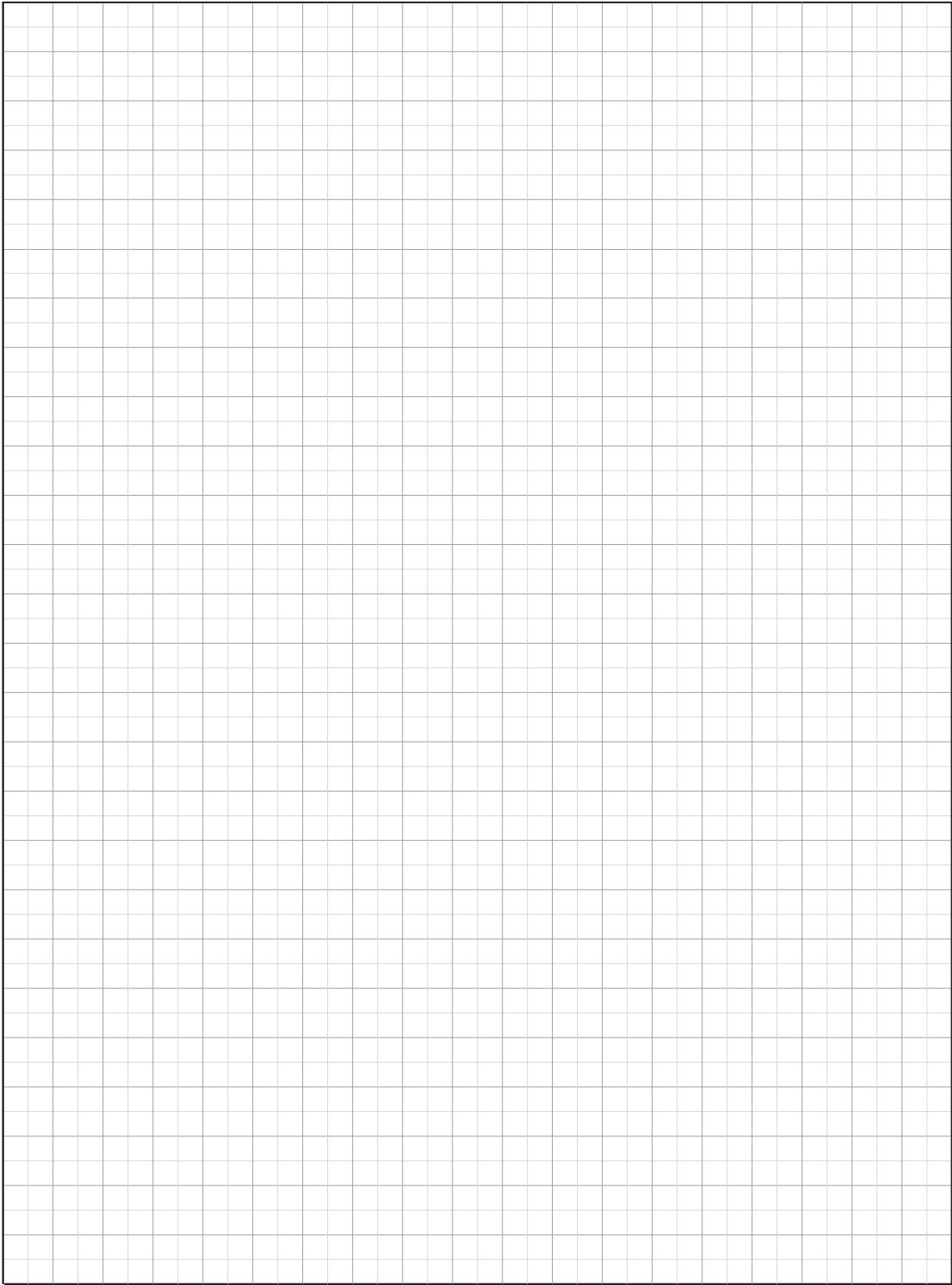


Notes

58

A large rectangular area filled with a fine grid pattern, intended for writing notes. The grid consists of small squares and covers most of the page's width and height.

Notes



CHUNJO



Manitowoc Crane Group - Americas

Manitowoc, Wisconsin Facility
Tel: [Int + 001] 920 684 6621
Fax: [Int + 001] 920 683 6277
Shady Grove, Pennsylvania Facility
Tel: [Int + 001] 717 597 8121
Fax: [Int + 001] 717 597 4062

Manitowoc Crane Group - EMEA

Europe Middle East & Africa
Tel: [Int + 33] (0) 4 72 18 20 20
Fax: [Int + 33] (0) 4 72 18 20 00

Manitowoc Crane Group - UK

Europe Middle East & Africa (Parts & Service)
Tel: [Int + 44] (0) 191 565-6281
Fax: [Int + 44] (0) 191 564-0442

Manitowoc Crane Group - Germany

(Sales, Parts & Service)
Tel: [Int + 49] (0) 2173 8909-0
Fax: [Int + 49] (0) 2173 8909-30

Manitowoc Crane Group - France

France & Africa (Sales, Parts & Service)
Tel: [Int + 33] (0) 1 303-13150
Fax: [Int + 33] (0) 1 303-86085

Manitowoc Crane Group - Netherlands

(Sales, Parts & Service)
Tel: [Int + 31] (0) 76 578 39 99
Fax: [Int + 31] (0) 76 578 39 78

Manitowoc Crane Group - Italy

Italy & Southern Europe (Sales, Parts & Service)
Tel: [Int + 39] (0) 331 49 33 11
Fax: [Int + 39] (0) 331 49 33 30

Manitowoc Crane Group - Portugal

Portugal & Spain (Sales, Parts & Service)
Tel: [Int + 351] (0) 22 968 08 89
Fax: [Int + 351] (0) 22 968 08 97

Manitowoc Crane Group - Singapore

Asia/Pacific excl China (Sales, Parts & Service)
Tel: [Int + 65] 6861-7133
Fax: [Int + 65] 6862-4040 / 4142

Manitowoc Crane Group - Shanghai

China (Sales, Parts & Service)
Tel: [Int + 86] (0) 21-64955555
Fax: [Int + 86] (0) 21-64852038

Manitowoc Crane Group - Beijing

China (Sales, Parts & Service)
Tel: [Int + 86] (0) 10 646-71690
Fax: [Int + 86] (0) 10 646-71691

Manitowoc Crane Group - Middle East

(Sales)
Tel: [Int + 971] (0) 4 348-4478
Fax: [Int + 971] (0) 4 348-4478
(Parts & Service)
Tel: [Int + 973] (0) 9 660-899
Fax: [Int + 973] (0) 2 707-740



www.manitowoccrane.com

